

# RED POLL BEEF » 2016 ANNUAL



**RED POLL**

***BEEF CATTLE***

[www.redpoll.org.au](http://www.redpoll.org.au)



*Award Winning*  
**RED POLL BEEF CATTLE**



**red**  
WARD

**ENQUIRIES GAY WARD**  
P: 0417 558 508 E: honerv@gmail.com  
[www.redcactusredpoll.com](http://www.redcactusredpoll.com)

## » Contents

President's Report	4
Executive Officer's Report	5
ABRI News	6
Calendar of Events 2016	9
Emerging Technologies	10
Genetic gains - the name of the game	14
Selection Indexes: Why, What, How?	16
Progeny Test Group Report	18
Eurimbla Gold	19
National Youth Committee Report	20
Around the Show Ring	22
Australian World Congress Scholarship Award	26
Red Polls win at the Noorat Carcass Competition	28
Victorian Regional Report	29
South Australian Regional Report	30
Western Australian Report	31
Northern NSW Region/Queensland Report	32
New South Wales Report	33
Membership Directory	34
Advertising Index	39



### National Executive

#### President

Gay Ward  
PO Box 460  
Altona North VIC 3025  
☎ 0417 558 508  
✉ honerv@gmail.com

#### Vice President - NNSW/QLD

Dean Jensen  
PO Box 3045 Lismore NSW 2480  
☎ 02 6663 1206  
☎ 0488 536 923  
✉ katgo@mullum.com.au

#### Treasurer - Victoria

Ross Draper  
75 Running Creek Rd  
Arthurs Creek VIC 3099  
☎ 0428 510 252  
✉ redcactus@bigpond.com

#### Federal

Gay Ward  
PO Box 460  
Altona North VIC 3025  
☎ 0417 558 508  
✉ honerv@gmail.com

#### Federal

Tim Light  
191 Dumaresq Road  
Armidale NSW 2350  
☎ 02 6775 1129  
☎ 0458 744 552  
✉ lagoon191@bigpond.com

#### New South Wales

Garrick Mulcahy  
1027 Horsley Drive  
Wetherill Park NSW 2164  
☎ 02 9604 5846  
☎ 0418 417 899  
✉ garrick.mulcahy@bigpond.com

#### Western Australia

Murray Williams  
PO Box 100 Quairading WA 6383  
☎ 08 9645 5220  
✉ yongerellen@activ8.net

#### South Australia

Peter Wilson  
PO Box 251 Minlaton SA 5575  
☎ 08 8853 4104  
☎ 0408 534 071  
✉ pcklwilson@hotmail.com

### ABRI Contacts

#### Executive Officer and Breedplan Processing Officer

Keryn Hutton  
ABRI University of New England  
Armidale NSW 2350  
☎ 02 6773 3059  
☎ 02 6772 5376  
✉ red.poll@abri.une.edu.au  
🌐 www.BREEDPLAN.une.edu.au

#### Registrar

Sharon Reynolds  
☎ 02 6773 2327  
☎ 02 6772 5376  
✉ sharon.reynolds@abri.une.edu.au

#### Technical Officer

Catriona Millen  
☎ 02 6773 3357  
✉ catriona@sbts.une.edu.au

Red Poll Beef Annual 2016 is the official publication of The Australian Red Poll Cattle Breeders Inc.  
c/- Australian Business Research Institute (ABRI) University of New England, Armidale NSW 2351

Publisher and compiled by: ABRI Graphic Design: emajine designz Printery: immij

DISCLAIMER: The contents of the 2016 Red Poll Annual are copyright and reproduction without permission of the publisher is forbidden. The views expressed by contributors and claims made by the advertisers are not necessarily endorsed by the editors and the Australian Red Poll Cattle Breeders Inc. Neither the editors nor the Australian Red Poll Cattle Breeders Inc. take any responsibility for the accuracy of the information contained within this magazine nor for the outcome of any action taken by readers or others based on the information contained therein.

# » President's Report

Welcome to the 2016 Red Poll Annual. The year has been very busy, exciting and positive for Red Polls



Gay Ward - President

In particular the second half of the year has seen very good market prices... at long last we all say! It seems too, during this time that the colour of the hair has not necessarily driven the prices achieved.

Rounding out 2014 was the Red Poll World Congress hosted here in Australia. It was a fantastic event which was years in the making for the Organising Committee and participants alike. It proved well worth the extraordinary effort of all those involved.

Congratulations to the NSW Region Organising Committee who conducted a very successful event at Sydney Royal where Red Polls were the Feature Breed. The event was very well supported with a high standard of quality Red Polls on display and a very friendly, encouraging and helpful atmosphere throughout. Breeders from all Australian regions participated, overall a great achievement, thank you and well done to all.

Thanks also to our judge Mr. Michael O'Sullivan who we hope had a challenging but satisfying day adjudicating the Red Polls presented before him.

There have been significant results during the year in various carcass competitions, and congratulations to all those who have competed.

As we know each competition varies in its criteria, numbers, pure bred only classes, or open classes. In all the instances detailed we are referring to pure bred Red Polls, which consistently are scoring comparable to or better than the cross bred with hybrid vigour. On these occasions the data is vital and must be harnessed and utilised for the Breeds advantage. Please take the time to send through your results to our Executive Officer so all can be recorded.

You will find more detailed articles throughout this publication but some key highlights are:

- > Sydney Royal **340 plus entries** overall, Red Polls **won the Virtual Taste test, a Gold medal, multiple Silver and Bronze medals.**
- > Noorat carcass competition, **47 entries a Red Poll won Grand Champion carcass.** Inaugural **eating quality** competition with 12 entries was also **won by a Red Poll.**
- > Whittlesea show carcass competition, **37 entries**, 2 classes, in which Red Polls placed **2nd** and **2nd** and **3rd** respectively.

The National Executive has welcomed on board Tim Light and Peter Wilson, re-signed with ABRI for another 2 years and engaged a new graphic designer, Emajine Designz, for the newsletter and the current Annual production; with a fresh new look emerging.

The new concept of the National AGM being incorporated with a tour organised by the hosting Region commenced in WA, and was a great success. We look forward to touring SA in 2016.

The National Executive has quite a list of items to look into however, rather than trying to do everything at once, we are currently concentrating on general communication, social media / promotion - timely and accurate, semen / AI sires / control sires.

While there are many areas the National Executive are working through to potentially enhance our breed, we look forward to ideas and input from Members as we are the Member representatives and your input is vital to our Organisation.

Our Youth Committee is continuing to hold regular phone meetings and face to face wherever possible. They are very enthusiastic, always discussing new and innovative ideas and keen to encourage Youth among Red Poll members and breeders.

The National Youth Camp held in Glen Innes has again been a resounding success and continues to be supported and recognised as a very beneficial and informative camp for our youth. Well done to the organising committee on another excellent event.

In closing, I would like to thank Members who participated throughout Australia in actively promoting Red Polls, and I wish everyone good luck and good health for the year ahead.

## A Reminder - On How Red Polls Compared In Sydney

Overview of the Sydney Royal trade cattle results.

CARCASS POINTS AVERAGE FOR BREEDS WITH OVER FOUR ENTRIES	
Angus	77.7
Murray grey	80
<b>Red Poll</b>	<b>83</b>
Hereford / Poll Hereford	75.6
Limousin	83.7
Shorthorn	82.3
Charolais	82.5
Simmental	79.5
Galloway	73.4

Source: The Drovers Journal

# » Executive Officer's Report

## Welcome to the 2016 Red Poll Annual Magazine



Keryn Hutton - Executive Officer

As we head into the Christmas/New Year period it is timely to reflect on an extremely busy and productive year for the ARPCBI.

Following close on the heels of a very successful World Congress and tour at the start of the year NSW region hosted the Sydney Feature Show. The event was

supported by breeders across Australia and was a credit to all involved. I would like to make special mention of the Red Poll youth members who contributed. It is encouraging to see the younger members engaged in Red Poll events, introducing new ideas and working alongside older Red Poll breeders to gain valuable experience.

The South Australian Junior Heifer Expo award went to NNSW/QLD junior Briony Looker. Briony gave a professional performance in addition to mentoring a number of other participants all using Moyle Park heifers thanks to Richard and Kay Daley.

The Red Poll National Youth Camp, once again held by NNSW/QLD region achieved another record turnout. It is an exceedingly well planned event and includes a variety of educational and fun activities for all ages to enjoy.

The year was capped off with a tour in Western Australia in conjunction with the AGM. This was very well received with participants getting to experience the geography, climate, excellent cattle and hospitality of WA region.

It is now some time since the ARPCBI was formed from the amalgamation of two separate Red Poll groups; Australian Red Poll Society Inc. and Australian Red Poll Cattle Breeders Association Inc. The strength gained from the merger has ensured the Red Polls survival in a very competitive industry. Let us continue to work together to further the breed into the future in a constructive and professional manner.

As 2016 begins I wish all members a successful, happy and peaceful year ahead.



Yongerellen Wattle Janelle Grand Champion Perth Royal Show 2015

**The Supreme Red Poll Exhibit 2015**  
Sydney Royal Red Poll Feature Show  
Perth Royal Show

**Yongerellen**   
*Home of the Grey Kangaroo*

*Sincere thanks to  
2015 purchasers*

### **Bulls for Sale**

Narrogin Invitational  
23<sup>rd</sup> Feb 2016

Other bulls and  
select females  
for sale privately

Contact Murray 08 9645 5220  
yongerellen@activ8.net.au

## » ABRI News

### Hugh Nivison to lead ABRI



Hugh Nivison - ABRI Managing Director

The Agricultural Business Research Institute (ABRI) has appointed one of Australia's most innovative livestock producers to take over the reins as Managing Director from October 1, 2015. Hugh Nivison runs "Mirani" at Walcha, which is recognised as a leading progressive Merino stud and commercial Angus cattle enterprise. The announcement was made by Mr Ian Locke as Chairman of the ABRI Board.

Hugh graduated in Veterinary Science in 1986 and is Adjunct Associate Professor in the School of

Veterinary Science at the University of Queensland. He has a high level of corporate experience as a Director of Australian Wool Innovation, a board member of the Australian Sheep Industry Co-operative Research Centre, Chairman of UNE Rural Properties, Director and CEO of Australasian Rural Investments Pty Ltd and he is currently Chairman of Australian Farmers Fighting Fund (AFFF). The latter organisation was formed by Australian farmers in their fight against unfair and unwarranted barriers to the development of sustainable farming practices. He will be strongly encouraged by ABRI to retain this role.

The ABRI, now in its 45th year, is an iconic agricultural information company based in Armidale, NSW and providing livestock services into 20 countries around the world. It is well known for its work in commercialising BREEDPLAN technology for beef cattle selection, its Dairy Express herd recording service, the ILRIC certification of beef cattle for export to overseas countries, its HerdMASTER herd management software and internet information

systems for livestock industries. Mr Locke praised the work of Alex McDonald who has been ABRI's MD since mid-2014. He has positioned the company for a new period of growth that is coming on line now including web based information services, a genomic focus to livestock selection, more emphasis on services to sheep breeding, futuristic offerings into the equine industry, more international consulting and development of 'big data' services through working collaboratively with research groups such as UNE, CSIRO and MLA. Mr Locke says that Hugh has the livestock management experience to ensure that these developments will be geared to satisfying grass roots needs.

Mr Nivison is excited about the opportunities for ABRI at regional, national and international levels. He looks forward to leading the company into a new period of innovation and service delivery that it will further enhance its fine reputation.

## OMEGA 3 RED POLLS

- OMEGA 3 REEF KNOT -



E.B.V's 3.5 22 35 46

Focus on fertility, carcass attributes, growth and volume

**"A better bottom line"**

**Nick & Prue Lee**

**"Bindaree"**

**51 Claremont Road**

**Quirindi NSW 2343**

**Phone 0429 990 388**

**Email [abbottlee@bigpond.com](mailto:abbottlee@bigpond.com)**

**Web [www.omega3redpolls.com.au](http://www.omega3redpolls.com.au)**



**Omega 3 Red Polls**

# WILSON'S

---

## RED POLL CATTLE

• Sires used in 2015 •



Oakwood Bright Light RMW H169



Oakwood Free Range RMW P59



Oakwood Zorba Top Gain RMW L89



Oakwood Franklin RMW P26



Oakwood Top Gun RMW P123



Oakwood King of the Mountain RMW Q108

**ENQUIRIES ARE ALWAYS WELCOME**  
**QUALITY PERFORMANCE RECORDED BULLS AND FEMALES AVAILABLE**



**Alan and Marilyn Wilson**  
Brentwood via Minlaton SA 5575  
**Email** wilsonbeef@hotmail.com  
**Phone** 0428 434 534

**Peter and Kristen Wilson**  
PO Box 251 Minlaton SA 5575  
**Email** pcklwilson@hotmail.com  
**Phone** 0408 534 071



# USA 2017

## THE 15TH INTERNATIONAL RED POLL CONGRESS

### We are pleased to present the tentative itinerary for the 2017 World Red Poll Tour

We would like to encourage Red Poll breeders to participate in some manner. Participation can be done in many ways; taking the entire or part of the tour itself, helping to host at the various "stops" (please contact the host directly), attend the Congress at Purdue University (contact Dan Schmiesing). The tour has been designed to allow time to visit and interact with all the participants. Details will be coming in the future.

THURSDAY 1 JUNE 2017	Arrival, Dayton, Ohio: Welcome 5:00pm
FRIDAY 2 JUNE 2017	Jackson Farms, Spegal's Red Polls, Hoosier Park
SATURDAY 3 JUNE 2017	Shuter Sunset Farms
SUNDAY 4 JUNE 2017	Carl's Red Poll, Shippshewana
MONDAY 5 JUNE 2017	Shippshewana, Dinner/Theater
TUESDAY 6 JUNE 2017	Shippshewana/West Lafayette, Indiana
WEDNESDAY 7 JUNE 2017	Conference Purdue University
THURSDAY 8 JUNE 2017	McMarshall Farms/Peoria Illinois
FRIDAY 9 JUNE 2017	Caterpillar Tour
SATURDAY 10 JUNE 2017	Hannibal, Missouri/Kansas City
SUNDAY 11 JUNE 2017	Womelsdorf Red Poll Cattle
MONDAY 12 JUNE 2017	Wiese Farms, Independence, Missouri
TUESDAY 13 JUNE 2017	St. Louis
WEDNESDAY 14 JUNE 2017	Budweiser/Clydesdale, Purina Research Farm
THURSDAY 15 JUNE 2017	Young's Red Poll
FRIDAY 16 JUNE 2017	Nashville
SATURDAY 17 JUNE 2017	Belyew's Red Poll/Nashville
SUNDAY 18 JUNE 2017	Ashville, North Carolina
MONDAY 19 JUNE 2017	Biltmore Estate/WinMock-Winston Salem, North Carolina
TUESDAY 20 JUNE 2017	Carson Red Polls
WEDNESDAY 21 JUNE 2017	Wilkshire
THURSDAY 22 JUNE 2017	Tamarac, West Virginia Gallipolis, Ohio
FRIDAY 23 JUNE 2017	Dorrance Red Polls/Formal Closing/Versailles, Ohio
SATURDAY 24 JUNE 2017	Mardan Acres/Stonebrook Farm-Cookout
SUNDAY 25 JUNE 2017	Jr. Preview Show/Miami County Fair Grounds, Dayton Airport and home

Further information will be available from the American Red Poll Association [www.redpollusa.org](http://www.redpollusa.org)





# » Calendar of Events 2016


<p>JANUARY 27 TO FEBRUARY 4</p> <p>VICTORIA Autumn Beef Week</p>	<p>FEBRUARY 7-10</p> <p>SOUTH AUSTRALIA Beef Field Days</p>	<p>FEBRUARY 26-28</p> <p>ACT Royal Canberra Show</p>	<p>MARCH 17-30</p> <p>NEW SOUTH WALES Sydney Royal Easter Show</p>
<p>APRIL 7-10</p> <p>VICTORIA Farm World, Lardner, Warragul</p>	<p>JUNE 7-9</p> <p>QUEENSLAND Farmfest Field Days Toowoomba</p>	<p>JULY 18-21</p> <p>SOUTH AUSTRALIA Junior Heifer Expo Adelaide</p>	<p>AUGUST 5-14</p> <p>QUEENSLAND Royal Queensland Show</p>
<p>SEPTEMBER 2-11</p> <p>SOUTH AUSTRALIA Royal Adelaide Show</p>	<p>SEPTEMBER 17-27</p> <p>VICTORIA Royal Melbourne Show</p>	<p>SEPTEMBER 24 TO OCTOBER 1</p> <p>WESTERN AUSTRALIA Perth Royal Show</p>	<p>OCTOBER 4-6</p> <p>VICTORIA Elmore &amp; District Field Day</p>



**Home of the Red Poll**  
Red Polls grown at the top of the range  
**Enquiries Welcome**

Contact: Albert or Rachael Hancock  
"Yarraldool", Pinkett Road, Glen Innes NSW 2370  
Phone: (02) 6733 4666


021638862



**PRISCILLA HANCOCK "WELLROCK"**  
110 BLACKS ROAD GLEN INNES N.S.W  
PH. 02 6732 5038

## Sophronites

New crop of calves by Reserve Senior Champion at  
Whittlesea Congress Show 2014 (all born unassisted)



**FOR INSPECTION OF SALE STOCK**

Contact Nell and Ian Staff  
Phone (03) 5786 5251 or 0411 314 501  
Email [ianstaff@techinfo.com.au](mailto:ianstaff@techinfo.com.au)  
For semen sales visit [www.sophronitesredpoll.com](http://www.sophronitesredpoll.com)

## » Emerging Technologies

The Local Land Services recently ran an excellent day at the Glen Innes Research Station. Their focus was on 'meeting market specs'



The first speaker was Dr. Linda Cafe who explained the differences between the three muscling selection lines of cattle in the NSW DPI muscling herd project that has run for the last twenty three years. The herd is comprised of low muscle line (D muscled average), a high muscle line (C+ average) and the myostatin line (B muscle average). The myostatin cows carry one copy of the nt821del11 (Belgian Blue) myostatin gene.

The herd has been selected for visual muscling only and are fully recorded within Angus GROUP BREEDPLAN. Using the myostatin gene gives a larger boost to meat yield, but it is advisable to manage British herds to ensure that cattle carry only one copy. Serious problems may arise, such as respiratory conditions, in cattle with two copies of the gene. The DPI herd cows and bulls are tested to ensure that cattle carrying the gene are not mated together.

On medium/high nutrition increased muscling did not affect the calving rates, maternal performance and the ability to fatten between the three muscling lines. Under 2 years of low nutrition the myostatin line showed a greater drop in pregnancy rate, calving rate and weaning rate than the Low and High lines, but no difference in the weight of calves weaned.

At the feedlot steers from the three lines grew at the same AGD, but the higher muscled steers ate less to result in a better Net Feed Intake (kg/d).

Data from the herd has shown that better muscling results in higher meat yield and Linda believes that work with the new 3D cameras will support that result.

The second speaker was Dr. Malcolm McPhee who discussed the Beef Specs tools (BeefSpecs and the BeefSpecs Drafting Tool) that are currently available on the NSW DPI website ([beefspecs.agriculture.nsw.gov.au](http://beefspecs.agriculture.nsw.gov.au) and [beefspecs.agriculture.nsw.gov.au/drafting](http://beefspecs.agriculture.nsw.gov.au/drafting)). These are excellent tools, but they are only as accurate as the information you put into them. Many of us are good at weighing our cattle, but not so good at measuring dry matter production or pasture quality to assess weight gain. Nor do many of us measure the hip height of our cattle to determine a frame score and how good are our fat assessment skills? Malcolm then introduced the new 3D cameras his group has been working on, and which he believes will revolutionise live cattle assessment and provide objective measurement for breeding and management decisions.

We then went to the yards to see the cows and steers from each of the three muscling selection lines, where Brett Littler, from the Central Tablelands LLS explained how to assess the differences between muscle and fat in each of the three lines. One of his comments that interested me was that although all the cattle were of similar fatness the lower muscled cattle looked considerably thinner.

The last speaker was Greg Krarup from Whyalla Feedlot and he explained that it is vital for producer's to meet feedlot specifications. It is all part of the profitability chain. Also, that industry feedback is important for evaluating our breeding direction and for making modifications that may be needed in our cattle breeding operations.

"We need to breed cattle that are high yielding with good eating quality if we are to hit the top of the grid and succeed with the new value payment system that Tey's and others are planning to introduce. A 3D camera will help us do this at home, the camera still needs refinement, but it is not far away. It will allow accurate information to be added to Breedplan, it will remove our subjective biases and allow us all to improve our management and profitability".

» Article by Prue Lee

### Photos (left to right)

» Cow and calf 550kg low muscle

» Cow and calf 550kg high muscle

## Value-based beef carcass payments within two years...are we ready for it?

Rewarding cattle producers for the meat yield and quality of the cattle they produce will be a quantum leap for the beef industry. For decades there has been talk about the advent of value based payment systems, and a recent announcement by the processing sector to go this way has reassured producers breeding and raising quality cattle that the checkered flag is only two years away.

The NSW Department of Primary Industries (DPI) has been at the forefront of research in the field of muscling and lean meat yield for more than 20 years. The research led by the late Bill McKiernan, DPI established a research cow herd in 1992 with divergent selection lines based on whole body muscling (High and Low). In 2004, a third line was incorporated into the herd with animals carrying one of the Myostatin gene mutations responsible for double muscling.

### Dr Linda Cafe, Research Officer from DPI in Armidale said

“The research has shown that whole body muscling measured by visual muscle score is a better predictor of increased carcass retail beef yield and dressing percentage than other indirect measures such as eye muscle area, with or without weight adjustments. This suggests that selection using visual muscle score could help increase the profitability of the beef industry.”

“Carcass results from the herd have revealed that when muscle score increased from C to B an increase in dressing of 1.2% units, and an increase in retail beef yield of 1.6% units was gained. This is real lean meat gain and does not rely on reducing fatness to increase yield. As a result good meat quality is maintained in the higher muscled, higher yielding cattle.”

“Genetic analysis on the herd has also revealed that muscling is highly heritable, with visual muscle score showing a heritability of 0.6 within muscle line when scoring is conducted by a reliable assessor. With new 3D camera technology promising the potential to provide objective measurement of muscle score, the final hurdle in the use of muscling may soon be cleared.”

» Courtesy: Northern Tablelands Local Land Services



# Ketlang Red Poll Stud

Quality, Performance Tested Red Polls



**Mark and Elke Harris**  
230 Cams Road, Lang Lang, Vic 3984  
Ph: 03 59978 340/Mob: 04 08366506  
Enquiries always welcome...

## » Emerging Technologies

### 3D imagery takes the guess work out of cattle specifications



A NEW development from the Department of Primary Industries (DPI) could take the guess work out of cattle specifications for good.

A team of research scientists are developing a system which uses a three dimensional camera, such as an Xbox camera, to assess livestock's specifications.

A demonstration and talk about the 3D imagery and how it could help livestock breeders was given by the research team at the DPI's Best Beef Field Day, hosted at the Glen Innes Agricultural Research Station on Thursday, November 26.

DPI Senior Research Scientist Malcolm McPhee, Armidale, said the camera would be a production tool graziers could use to determine certain beef specifications.

The research has used experts' subjective measurements of cattle specification as the gold standard and has produced a science to deliver an objective reading on factors like muscle, fat and frame.

Although subjective specification measurements could be reliable, Mr McPhee said they could be considered inaccurate, as people's opinions on specifications could differ.

The point of the camera is to provide farmers with a simple, objective reading of their cattle's specifications that are judged the same every time.

DPI livestock research officer Brad Walmsley, Armidale, said on average 10 to 20 per cent of cattle sent to abattoirs were penalised for not meeting specifications.

Farmers were losing close to \$35 for each beast that didn't meet specifications, which meant if 20,000 cattle were penalised, they would see a loss of \$700,000.

"It's a major loss of profitability for the industry," Mr Walmsley said.

It was hoped the camera system would spark more understanding among farmers of what was required of them from their end markets and how they could go about further developing these specifications in their herd.

Mr Walmsley said it could also be used for making decisions regarding a grazier's end market, as they would know what they're delivering to the abattoir before they're trucked and sold.

"It would allow them to be a bit more flexible with their end markets," he said.

The 3D imagery is still in the production phase but the DPI are hoping to make it available to farmers as soon as possible.

Mr Walmsley said there was plenty of possibility for the 3D imagery, which could include making assessments on things like animal welfare.

They're also hoping to make the system able to be incorporated into everyday cattle work, so farmers aren't having to bring their cattle to the yards just to use the system.

» Article by Amelia Williams  
The Land, 30 November 2015

#### Photo

» DPI livestock research officer - Brad Walmsley, DPI senior research scientist - Malcolm McPhee, Northern LLS senior land services officer - Jason Siddell and Central Tablelands LLS senior land services officer - Brett Littler

# TANAMERAH RED POLLS

FOR FERTILE - DOCILE - SOUND - EASY DOING RED POLL CATTLE



*Our aim is to produce productive males and females with good type and quality carcass attributes to suit the commercial cattle industry*

“Culgoa” 408 Bezzants Road, Deepwater NSW 2371

Phone Jill Bockman 0437 551 842 | John Rhea 0427 721 343 | Email [jack.n.jill@bigpond.com](mailto:jack.n.jill@bigpond.com)

# Koallah Park



**DON CASTLE**

2205 Princes Highway  
Stoneyford  
VIC 3260

Phone: 0417 169 914

❖ Bulls, Heifers, Cows and  
Calves available

## » Genetic gains - the name of the game



### SBTS

The Southern Breeding Technology Services will notch up a decade of genetics technical and extension support to the beef industry as stage two of the project concludes in December.

The quiet achiever, funded by the MLA Donor Company, 14 breed associations and the Agricultural Business Research Institute, has been the backbone of genetics progress in southern beef herds.

The project has helped producers apply research outcomes from the Beef CRC, supported BREEDPLAN and developed numerous genetic selection tools, indexes and information resources.

### Genetic gains

SBTS Project Manager Alex McDonald said the project's greatest achievement was helping southern beef breeders improve their herds' rate of genetic gain – an achievement which has benefited every beef producer.

Alex said the project's original objective was to increase the weighted selection index by \$15/ cow mated from the base year of 2008 to 2013. This has been exceeded by 22% to \$18.33 per cow mated per year.

This has meant that the average weighted change in selection index trends of the southern seedstock sector has effectively doubled over the five year period of the project.

### Index support

SBTS may not be a well-known entity but its extensive technological and extension support has impacted on almost every southern beef-producing enterprise.

A major role of its team is to maintain and update the 32 selection indexes for the 16 stakeholder breeds including Angus, Hereford, Shorthorn, Limousin, Red Angus, Charolais, Murray Grey, Simmental, South Devon and Wagyu.

### Boosting BREEDPLAN

In addition to number-crunching, SBTS continues to provide technical support to breed societies for software upgrades, development of new genetic selection tools and the integration of new Estimated Breeding Values.

As each breed has been moved to the new ILR2 database, they receive monthly genetic analyses instead of receiving them only once or twice a year. The Gelbvieh and Blonde d'Aquitaine breed societies have most recently moved to monthly group BREEDPLAN analyses and are now able to produce enhanced BREEDPLAN reports.

Alex said SBTS promoted the Beef Information Nucleus programs for Angus, Charolais, Limousin and Wagyu and continues to assist in the development of new EBVs for various breeds.

"In recent times we helped implement Calving Ease Direct and Calving Ease Daughters EBV analysis and publication for Red

Angus and Docility EBVs for Hereford and Simmental," he said.

### Extension

SBTS has been helping breeders make more informed bull-buying decisions through their BullSELECT workshops.

During the past five years, 23 workshops have been held, attracting 470 breeders who gained a better understanding of the genetic information and selection tools available.

Other work by SBTS staff includes on-farm consultations, delivering workshops, creating a library of webinars and developing a host of other online information such as the SBTS Update and monthly TechTalk articles.

"We use social media as an additional communication stream for genetic technology updates including Twitter, Facebook and the SBTS and Tropical Breeds Technology Services (TBTS) YouTube Channel for uploading recorded webinars and videos," Alex said.

"Presently we have 40 videos on YouTube relating to genetic technologies to the beef industry."

SBTS library of online information including webinar courses will remain available at <http://sbts.une.edu.au>

### For more information contact

Alex McDonald  
T: 02 6773 3555  
E: [alex.mcdonald@abri.une.edu.au](mailto:alex.mcdonald@abri.une.edu.au)

# Moyle Park

Performance tested cattle



## MOYLE PARK PONTIAC MPS 1043

DOB 13/1/13 in his second mating season with 46 cows

MILK	200D	400D	600D
+8	+26	+39	+50



## DON'T MATE BY GUESSWORK

Use performance tested cattle to improve your beef production

- enquires and inspection welcome
- Moyle Park is EU Accredited and MN3 for Johnes
- bulls by Moyle Park Lachlan and Pilot available semen by Moyle Park Zeeman

View us on line at [www.moylepark.com](http://www.moylepark.com) or during the SA Beef Field Day - Wednesday 10th February 2016

◀ **Moyle Park Mithril, MPS 403** with 2 week old male Pontiac calf at foot MPS 1225

◀ **Moyle Park Langdon MPS 1118** on 22nd October 2015 weighing 612kgs and scanning 107cm<sup>2</sup> EMA

MILK	200D	400D	600D
+7	+25	+35	+48

## RICHARD AND KAY DALEY

PO Box 169 Jamestown SA 5491 | Phone/fax (08) 8664 1463  
Mobile 0438 641 463 | Email [moylepark@ozemail.com.au](mailto:moylepark@ozemail.com.au)

# » Selection Indexes: Why, What, How?



Catriona Millen

BREEDPLAN EBVs allow cattle producers to understand the genetic merit of individual animals, and thus to make selection decisions to improve the traits of importance to them and their clients.

Currently, the Australian Red Poll Cattle Breeders Inc. has fourteen traits for which BREEDPLAN EBVs are calculated. These are listed below:

- > Gestation Length
- > Birth Weight
- > 200 Day Weight
- > 400 Day Weight
- > 600 Day Weight
- > Mature Cow Weight
- > Milk
- > Scrotal Size
- > Carcase Weight
- > Eye Muscle Area (EMA)
- > Rib Fat
- > Rump Fat
- > Intramuscular Fat (IMF)
- > Retail Beef Yield (RBY)

While these EBVs provide Red Poll producers with a comprehensive range of information regarding the genetic merit of an animal, it can result in a dilemma when trying to select animals for use in a particular breeding program. In an ideal situation, it would be desirable to select animals that excel in all traits, but rarely will an animal be superior for all of the available EBVs. So which traits should producers put most emphasis on? How much emphasis should be placed on each trait?

## What is a selection index?

A selection index provides an overall “EBV” of an animal’s genetic value for a specific market and breeding system. Selection indexes enable cattle producers to make “balanced” selection decisions; taking into account the relevant growth, carcase & fertility attributes of each animal to identify the animal that is most profitable for their particular commercial enterprise.

Selection indexes can be designed for both terminal production systems, where all progeny are sold, and for self-replacing production systems, where female progeny are retained for breeding. Both terminal and self-replacing selection indexes reflect the short term profit generated by a sire through the sale of his progeny. In addition, the self-replacing selection index reflects the longer term profit generated by a sire’s daughters in a self-replacing cow herd.

Selection indexes are expressed in dollars, as “net profit per cow mated”. Ranking seedstock animals on their selection index value sorts them based on their progeny’s expected profitability for the targeted production system. For example, if we compare a bull with a selection index of +\$100 with a bull that has a selection index of +\$20, we can estimate that the difference in net profit from the progeny of the bulls would be:

- > = x difference in Index  
(as half the progeny’s genes come from the sire)
- > = x (100-20)
- > = \$40 per cow mated
- > If the two bulls were joined to 200 cows during their breeding life, this would equate to a difference of  $(200 \times \$40) = \$8,000$ .

## How is a selection index calculated?

Selection indexes are calculated using the BreedObject software that has been developed by the Animal Genetics and Breeding Unit (AGBU) at the University of New England. BreedObject combines the BREEDPLAN EBVs for an animal with an economic weighting

(based on costs of production and returns on outputs), to produce a single Selection Index. A separate selection index can be produced for any particular production scenario and market. Most breeds have three or four selection indexes for different breeding systems (terminal or self-replacing) and end markets.

## What are the benefits of selection indexes?

There are a number of benefits of selection indexes, both to individual breeders and to breed societies.

Individual breeders can use selection indexes to:

- > Create a ‘yardstick’ for an animal’s overall genetic merit that can be used in association with the animal’s individual EBVs to increase the accuracy of selection and speed up the rate of genetic progress.
- > Make simultaneous multi-trait selection for traits that may vary in heritability, genetic variation, level of economic importance and any antagonistic trait correlations.
- > Measure and assess the genetic progress being achieved within their breeding program over time in terms of overall commercial profitability.

Breed societies can use selection indexes to:

- > Identify and disseminate bulls with the highest genetic merit to commercial beef production operations.
- > Measure and assess the overall genetic progress of animals within their breed over time in terms of commercial profitability.

## For further information on selection indexes, please contact

Catriona Millen  
SBTS Technical Officer  
Phone: 02 6773 3357  
Email: [catriona@sbts.une.edu.au](mailto:catriona@sbts.une.edu.au)



» Report by Catriona Millen





Brunswick Show - World Congress Feature



Judging Sydney Feature Show



Sydney Royal Feature Show



Whittlesea World Congress Show



Cassandra and Tiana Poulton - Booleroo Centre, Damon Sims - Sheffield, Tasmania and ARPCBI awardee Briony Looker, SA Heifer Expo



Whittlesea World Congress Show

## » Progeny Test Group Report

The Progeny Test Group set out with an initial project to improve the across herd linkages and provide greater accuracies with animal EBV's

The opportunity to do this with imported semen which would have also linked Australia to the USA fell at the last hurdle when available semen had not met the quarantine requirements.

As a result local semen has been used in what is undoubtedly the largest organised across region AI program in the Red Poll Breed. Eight members from across all of the Red Poll regions await calves in various seasons in 2016. A major part of the program involves all breeders using their own back up bull to allow linkage within their own herd. All calves will be weighed at birth, weaning and 200 days.

The group also approached National Executive to support a move to the new computer system ILR2, which will not only provide more timely data but also be a system which has full technical support from ABRI.

Catriona Millen from Southern Breed Technologies, of which Red Polls are a member, has assisted the group with helpful technical advice, joining phone hook up meetings and some on farm visits.

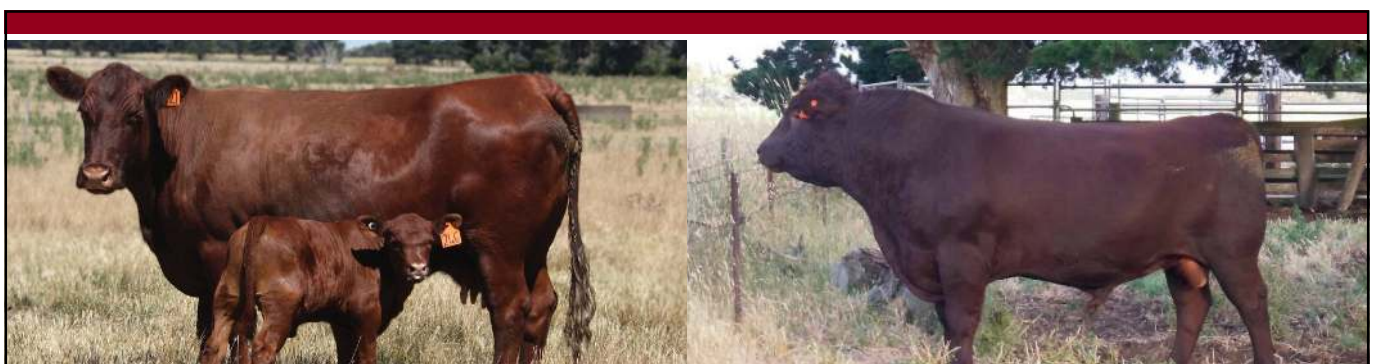
There have been discussions regarding the possibility of the Red Poll Breed being highly desirable for future payment at abattoirs on a 'value based' payment system. With a belief that the breed does not attract the price it at times deserves on a live auction system, nor a weight and basic grade system after slaughter, this 'value based' system may be ideal. Payment is made according to the actual sale value of product produced. Teys Abattoirs are looking at introducing this system and members of the group are seeking to be involved from the initial trial stage.

Teys shares vision to move to value-based cattle payments within two years

» Article by Jon Condon  
Beef Central  
12 October 2015

Teys Australia is embarking on an historic move designed to reward producers for the meat yield their cattle produce, as well as their quality. The company shared details of its vision to move to Value-Based-Payment system with suppliers at a field day on Friday. There can be \$80 differences in value from one carcase to another, based solely on meat yield, producers have been told.

**For more information go to:**  
<http://www.beefcentral.com/news/teys-shares-vision-to-move-to-value-based-cattle-payments-within-two-years>



### *Breeding for Excellence*

**GREG ABBOTT**

625 Grinters Lane, Kolora Vic 3265

phone 03 5592 7224 mob 0438 922 313

email [gk.abbott@bigpond.com](mailto:gk.abbott@bigpond.com)



**Turanga**  
RED POLL STUD Est. 1985

## » Eurimbla Gold

Ian and Jill Coghlan have a long tradition of exhibiting winning steers in royal and regional carcass competitions



They continued their successes at this year's Royal Easter Show in Sydney.

The Gerogery based Eurimbla Red Poll stud's heavy-weight steer won a gold medal in the competition which involved 344 exhibits. To win a gold medal required a carcass score of at least 90 points out of 100 and to also score 15/15 for market specification and at least 37/40 for saleable meat yield and 37/45 for eating quality.

The steer was prepared by Yanco Agricultural High School and is shown with its parader, Zac Liley from Albury. The steer's sire, Eurimbla Leopold, had semen exported from Holbrook Breeders to Canada and New Zealand in 2014.

A second steer with Eurimbla bloodlines was exhibited by Prairiewood High School in western Sydney, and scored 88 points to win a silver medal in the middle-weight division of the carcass competition.

### Photos (left to right)

- » Zac Liley and gold medal steer
- » Eurimbla Leopold - sire of gold medal steer

# EURIMBLA RED POLLS



EURIMBLA TOBY - 13 MONTHS

### 2015 HIGHLIGHTS

- Gold Medal carcass at Sydney Royal - with 90 points and against 344 exhibits
- 3 broad ribbons at Sydney Royal Feature Show
- Purchased 5 select females from Yongerellen and Red Sands, WA
- Selling steers to feedlots at premium prices

### FOR SALE IN 2016

- An extensive selection of ET bred (NZ blood) and home bred bulls - sired by bulls that produce champion carcasses and stud stock
- Springing stud heifers for autumn calving
- Select stud females

**ENQUIRIES AND INSPECTIONS ARE ALWAYS WELCOME**

**Contact - Ian and Jill Coghlan 02 6026 0630 or 0412 650 050**

# » National Youth Committee Report

Over the past 12 months the National Youth committee have been mainly finding their feet

Our first task was to come up with ideas on how to raise money to give back to the Red Poll youth. Our first fundraiser was to hold an auction in conjunction with the Red Poll feature at the Sydney Royal. This was done during the dinner after judging where we offered 12 lots consisting of a range of products such as semen, herd books and Red Poll port. A big thank you goes to donators of the products; the event wouldn't have been a success without your generosity. Another big thank you goes to the purchases and under bidders on the night; you have definitely helped us raise a substantial amount of funds. The money raised from this one event has been put towards the South Australian Scholarship and the member award at the 2015 Red Poll National Youth Camp.

Another big project we have been working on is how the National Youth committee is to operate in regards to electing positions and a committee. Our proposal is still to be passed by the National Executive; however we all agree that it should be similar to how we select our National Executive through the regions. We are aiming that the new National Youth committee will be announced at the 2016 AGM held in South Australia. This information will be circulated through the regions so if you are interested in becoming

part of the committee please follow up with your regional secretary or anyone currently on the National Youth committee.

This is a new venture for the Red Poll Breed and it has already been shown great support. It is designed to connect the younger members of the breed and create new ideas on how to promote the breed. It is also an opportunity to have your say as a younger member at a national level.

I believe Red Poll youth are very well supported by our membership and having experienced this support myself, I encourage any young member to run an event aimed at the youth be it big or small. I am sure you will be pleasantly surprised at the support you receive.

Our committee has changed slightly over the past year, it now consists of the following: Rachael Hancock, Briony Looker and Tim Light from the Queensland/Northern New South Wales Region, Letisha Salzke and Dylan Summerell from the New South Wales Region, Trent Storm from the Victorian Region and Hayley Goad from the Western Australian Region. Positions are Rachael Hancock as President and Briony Looker and Letisha Salzke share the Secretary role.

I look forward to working with the Red Poll youth in the coming year and welcoming in a new committee come the AGM in 2016.

## Youth Committee

### President

#### Rachael Hancock

Pinkett Road  
Glen Innes NSW 2370

☎ 02 6733 4666

📞 0432 581493

✉ hancock45@hotmail.com

### Vice President

#### Hayley Goad

108 Coventry Road  
Roleystone WA 6111

☎ 08 93906196

📞 0488 378444

✉ hayley.goad@primaries.com.au

### Secretary/Treasurer

#### Briony Looker

Blue Hills Road  
Glen Innes NSW 2370

📞 0488 527949

✉ briony\_looker@yahoo.com

#### Letisha Salzke

5 Bowler Street  
Braidwood NSW 2622

📞 0428 759685

✉ teash\_13@hotmail.com

### Committee Members

Tim Light

Trent Storm

Dylan Summerell

» Report by Rachael Hancock



# MINYON RED POLLS

Kate Goulding  
& Dean Jensen

Kate 0428 221 077 or Dean 0488 536 923  
email katgo@mullum.com.au

# » National Red Poll Youth Camp Report



Friday morning we headed to Glen Innes for the annual Red Poll Youth camp. This year there were lots of new people, which was great to see. We were all welcomed and provided with buckets containing a brush, cap, our shirts, Red Poll beef annual and information to help you through the weekend. Cattle allocation was next, although I had my own. Everyone had a choice of animal and we led them around so everyone got to know their animal better and to change if needed.

Ben Foster from GrazAg, Armidale then gave a talk on nutrition and the ruminant digestive system, what to feed, and the importance of how you go about doing it.

Lunchtime gave us time to catch up and talk to some new people over a great meal which was followed by a talk on Red Poll, the breed, given by Albert Hancock.

We were then split into groups based on age and experience for the rotation among planned activities. These included halter tying and safety knots by Albert Hancock, an informal talk by Eliza Cunningham on how you should present yourself and having the right attitude at shows and cattle selection by Steve Crowley, where he talked about the importance of choosing animals correctly, what to look for, and how to judge a beast. Following this Rachael Hancock and Grant Watt gave us a go at tattooing on some cardboard cut-out ears, plus a talk on stud management and the different forms of calf marking and the tools used.

Afternoon tea was welcomed by everyone after which we fed up, mucked out and watered our animals. Showered and clean we had a big dinner followed by making halters for Sunday's events.

A good end to the day!

Saturday started off with mucking out and feeding followed by breakfast. Our second rotation included detailing on how to prepare for the show by Kate Morris, the "do's and don'ts" of parading by Grant Watt and clipping by Jo Watt. Morning tea came so quickly with everyone happy to see tables full of food to choose from.

Following morning tea Nigel Brown from LLS Glen Innes gave an Animal Health talk which I missed all but the last little bit. His shared experience and funny stories really got everyone's attention, even the little boys of 8. I was told by the younger kids that it was excellent and they were fascinated by Nigel's talk on diseases and parasites.

During the talk Jo Watt very kindly helped me clip my bull and gave me and a few others more detail on how to clip. Grant also gave me his time and advice on questions I had. At the end of the vet talk a small presentation was held to thank those who had given up their time for the camp.

The Red Poll extravaganza by Sam and Kelso was next. It was heaps of fun and a great way to chill out. We then played a game to boost confidence by letting the younger kids give instructions to the older kids using the microphone - really funny for them! Prime Beef Selection and Prime Beef Junior judging then started.

After a much needed afternoon tea there was the Mock auction, run & organised by Ben Sullivan, which saw some of the quieter kids really step up and have a go. As usual, in the afternoon we fed, mucked out and gave water to our animals before showering. An awesome roast dinner

and heaps of fun followed where we all had a great laugh.

Sunday came really fast! We all got in and helped the younger ones wash and brush their animals with the brush, bucket and soap provided. Then after everyone was done, we got changed into our jeans or moleskins and our youth camp shirt for official photos. Junior judging started after morning tea with all the stands filling with parents and supporters. Rachael Hancock and Briony Looker were really supportive telling jokes to helping us get rid of the nerves before we went in to speak.

Following lunch was Paraders where in the open Paraders, we all got to watch parents try to lead our animals prior to presentation time.

I am honoured to be representing the Red Poll Breed this year as Youth Ambassador. I hope to expand people's knowledge of Red Polls and do my best to fulfill my role. So many people have given me their time, knowledge and encouragement and that's what I want to give to the "youngins" in the industry especially this year. I am excited to get started and help continue to expand Red Polls in Australia. Thank-you to everyone involved in running such a great camp, I look forward to working with you all next year.

## » Report by Jess McClenaghan

### Photos (left to right)

- » 2015 Youth Camp Attendees
- » Overall Young Auctioneer Braith Rohde (centre) Ben Johnston - Ray White Rural Tenterfield (left) and Ben Sullivan (right)
- » Jess McClenaghan Winner of the Red Poll Member Award 2015 Youth Camp

## » ROYAL SYDNEY 2015 FEATURE BREED

*Judged by Michael O'Sullivan  
Lower Mt Walker QLD*



*Photo: W. Jenkins - Grand Champion Female and Supreme Exhibit Yongerellen Wattle Janelle.*

*L-R: Jill Fiebiger - Mt Gambier SA and exhibitor Murray Williams - Quairading WA, handlers Nichallita Gallagher and Casey Morris - Donnybrook WA, Ian Coghlan - Gerogery NSW, Judge Michael O'Sullivan - Lower Mt Walker QLD and Michael Milner - RAS cattle committee councillor.*

<b>JUNIOR CHAMPION FEMALE</b>	R Draper - Red Cactus Robtho
<b>RESERVE JUNIOR CHAMPION FEMALE</b>	I & J Coghlan - Eurimbla Rising Moon
<b>SENIOR CHAMPION FEMALE</b>	JH Williams and Co - Yongerellen Wattle Janelle
<b>RESERVE SENIOR CHAMPION FEMALE</b>	I & J Coghlan - Eurimbla Next Door
<b>GRAND CHAMPION FEMALE</b>	JH Williams and Co - Yongerellen Wattle Janelle
<b>JUNIOR CHAMPION BULL</b>	I & J Coghlan - Eurimbla Toby
<b>RESERVE JUNIOR CHAMPION BULL</b>	R Wilkinson - Baladeen Jericho
<b>SENIOR CHAMPION BULL</b>	R Draper - Red Cactus Jobe
<b>RESERVE SENIOR CHAMPION BULL</b>	JH Williams and Co - Yongerellen Endeavour Imitator
<b>GRAND CHAMPION BULL</b>	R Draper - Red Cactus Jobe
<b>SUPREME EXHIBIT:</b>	JH Williams and Co - Yongerellen Wattle Janelle
<b>THE BRIGADIER G S HURST PERPETUAL PRIZE FOR GRAND CHAMPION BULL</b>	R Draper - Red Cactus Jobe
<b>THE W K COWLISHAW PERPETUAL TROPHY FOR THE RED POLL BEST EXHIBIT</b>	JH Williams and Co - Yongerellen Wattle Janelle

### Steer Competition

<b>GOLD MEDAL</b>	90 points - I & J Coghlan prepared by Yanco Agricultural High School
<b>SILVER MEDALS</b>	<ul style="list-style-type: none"> <li>▶ 88 points - Bellingen High School prepared by Prairiewood High School</li> <li>▶ 87 points - RJ &amp; SD Wilkinson prepared by Bede Polding College</li> <li>▶ 87 points - Lagoon Red Polls prepared by Lagoon Red Polls</li> <li>▶ 86.5 points - Garrick Mulcahy prepared by Garrick Mulcahy</li> </ul>
<b>BRONZE MEDALS</b>	<ul style="list-style-type: none"> <li>▶ 85 points - Kookabookra Red Polls prepared by Kookabookra Red Polls</li> <li>▶ 83 points - Belault Red Polls prepared by Braidwood Central School</li> <li>▶ 82.5 points - Belault Red Polls prepared by Braidwood Central School</li> <li>▶ 80 points - I &amp; J Coghlan prepared by I &amp; J Coghlan</li> </ul>
<b>WINNER VIRTUAL TASTE TEST</b>	RJ & SD Wilkinson prepared by Prairiewood High School

## » ROYAL ADELAIDE 2015

*Judged by Darren Greenup  
Jandowae QLD*



*Photo: W. Jenkins - Grand Champion Bull Stormley Optimus Prime with Judge Darren Greenup - Jandowae QLD, Rick Miller; Landmark and handler Lacy Kelleher - Barham NSW.*

JUNIOR CHAMPION FEMALE	S Storm & Sons - Stormley Opal
RESERVE JUNIOR CHAMPION FEMALE	S Storm & Sons - Stormley Olivia
SENIOR CHAMPION FEMALE	S Storm & Sons - Stormley Lara
RESERVE SENIOR CHAMPION FEMALE	RM Wilson & Son - Oakwood Gem 990
GRAND CHAMPION FEMALE	S Storm & Sons - Stormley Lara
JUNIOR CHAMPION BULL	S Storm & Sons - Stormley Optimus Prime
RESERVE JUNIOR CHAMPION BULL	RM & KL Daley - Moyle Park Langond
SENIOR CHAMPION BULL	S Storm & Sons - Stormley Ned Kelly
GRAND CHAMPION BULL	S Storm & Sons - Stormley Optimus Prime
MOST SUCCESSFUL RED POLL EXHIBITOR	S Storm & Sons

## » ROYAL PERTH 2015

*Judged by Ian Coghlan  
Gerogery NSW*



*Photo: Farm Weekly - Grand Champion Bull Red Sands Simba exhibited by Q & S Hooper - Gwelup WA.*

JUNIOR CHAMPION FEMALE	W & B Owston - Ranfurley HPW Nahdia (AI)
RESERVE JUNIOR CHAMPION FEMALE	Q & S Hooper - Red Sands Tammy
SENIOR CHAMPION FEMALE	JH Williams & Co - Yongerellen Wattle Janelle
RESERVE SENIOR CHAMPION FEMALE	W & B Owston - Ranfurley Julietta (AI)
GRAND CHAMPION FEMALE	JH Williams & Co - Yongerellen Wattle Janelle
JUNIOR CHAMPION BULL	W & B Owston - Ranfurley Nigel
RESERVE JUNIOR CHAMPION BULL	JH Williams & Co - Yongerellen Ironbark Noel
SENIOR CHAMPION BULL	Q & S Hooper - Red Sands Simba
GRAND CHAMPION BULL	Q & S Hooper - Red Sands Simba
SUPREME CHAMPION	JH Williams & Co - Yongerellen Wattle Janelle
MOST SUCCESSFUL EXHIBITOR	W & B Owston

## » ROYAL MELBOURNE 2015

*Judged by Sharon Wright  
Heyfield VIC*



*Photo: W. Jenkins - Grand Champion Female and Supreme Exhibit Stormley Lara and calf with Trent and Cody Storm - Barham NSW, ARPCBI President Gay Ward - Arthur's Creek VIC and Judge Sharyn Wright - Heyfield VIC.*

JUNIOR CHAMPION HEIFER	R Draper - Red Cactus Robtho
RESERVE JUNIOR CHAMPION HEIFER	S Storm & Sons - Stormley Opal
SENIOR CHAMPION COW	S Storm & Sons - Stormley Lara
RESERVE SENIOR CHAMPION COW	R Draper - Red Cactus Janla
GRAND CHAMPION FEMALE	S Storm & Sons - Stormley Lara
JUNIOR CHAMPION BULL	R Draper - Red Cactus Joe
RESERVE JUNIOR CHAMPION BULL	I & J Coghlan - Eurimbla Boomer
SENIOR CHAMPION BULL	S Stormley & Sons - Stormley Ned Kelly
GRAND CHAMPION BULL	R Draper - Red Cactus Joe
SUPREME RED POLL EXHIBIT	S Storm & Sons - Stormley Lara
BEST THREE HEAD	Princess Royal Cup
SIRE'S PROGENY GROUP	R Draper - Red Cactus Group by Red Cactus Jethro
BEST TWO BULLS - T.H. PAYNE TROPHY	I. & J. Coghlan
MOST SUCCESSFUL EXHIBITOR	S Storm & Sons

## » ROYAL BRISBANE 2015

*Judged by Berry Reynolds  
Toowoomba, QLD*



*Photo: Grand Champion Exhibit Jalabee Jessie James with Judge Berry Reynolds - Toowoomba QLD, Lisa Hedger of Elders, ARPCBI President Gay Ward - Arthur's Creek VIC and exhibitor Cameron Jones - Bundarra NSW.*

CHAMPION COW OR HEIFER	C Jones - Jalabee Ella
RESERVE CHAMPION COW OR HEIFER	PM Hancock - Glenleigh Trixie
CHAMPION BULL	C Jones - Jalabee Jessie James
RESERVE CHAMPION BULL	J Bockman & J Rhea - Tanamerah Go Gettum
GRAND CHAMPION EXHIBIT	C Jones - Jalabee Jessie James



# STORMLEY

## RED POLLS



**Grand Champion Female, Supreme Red Poll Exhibit  
Supreme Exhibit of Whittlesea World Congress Show 2014  
Grand Champion Female Royal Melbourne Show 2014 & 2015  
Grand Champion Female Royal Adelaide Show 2015  
Supreme Red Poll Exhibit Royal Melbourne Show 2015**

**Most Successful Exhibitor ~  
Whittlesea World Congress Show 2014  
Adelaide Royal Show 2015  
Melbourne Royal Show 2015**

**S. Storm & Sons**

**Ph: 0354532140 Trent: 0428262991**

**Email: [stormley@dragnet.com.au](mailto:stormley@dragnet.com.au)**

**Barham NSW**

# » Australian World Congress Scholarship Award

Being selected as the Red Poll Youth Ambassador for the 2014 World Congress was an opportunity of a lifetime



As the scholarship winner I was able to attend the Congress tour from beginning to end, a total of 22 days. Throughout the trip I was paired with various mentors from a number of countries including New Zealand, United States, Canada, Jamaica, Kenya and UK. Each of my mentors were more than happy to share their cattle and business knowledge with me.

While I was honoured to be selected for this trip, I thought that the itinerary was not very exciting. My initial disappointment was that the host country was Australia and not being hosted overseas, but my thoughts soon changed once the tour began. The studs I had the opportunity to visit were studs I had grown up hearing about. I was able to look at genetics that are very accessible to me and could potentially help my own herd.

I cannot fault the 2014 World Congress organisers for the tour they put together. We saw such a variety of studs from big established herds that have been operating for generations to the newer studs that have just started out. All the accommodation and food was excellent and more importantly I think, true blue Australian. Along the tour there were also non Red Poll activities such as the caves in Western Australia and the Fairy Penguins in Victoria.

The conference day was made up of three strong speakers and two of which were not Red Poll members. I feel the topics they spoke about were relevant to Red Poll and the Beef Industry in Australia. The topics must have intrigued everyone as there were debates between participants right up to the final night. This was exactly the type of conference day needed for a World Congress tour with strong speakers pushing their views. This in turn promoted discussion as people shared their own views.

People have asked me what was the highlight of my trip and I can't narrow it down to just one thing. In terms of the herds I would have to say the Oakwood Stud in South Australia was a highlight for me personally. I have wanted to see this stud for a long time now and it certainly didn't disappoint. I may be a bit biased; but I really enjoyed what the Queensland Region did at the Glen Innes Showgrounds. To see the youth kids that I have helped throughout the years get so much out of talking to the international guests really made me feel like a true Ambassador. I guess another big highlight would be the connections and friendships I have made with other Red Poll breeders around the world. I look forward to the opportunities these connections provide in years to come. Hopefully I will be able to visit all the countries I now have connections in and see a lot of the herds I have heard so much about.

To me winning the scholarship was not just about going on a trip around Australia, it was more about being an Ambassador for the breed and on a broader scale the Australian Beef Industry. After talking to the other delegates I realised how many opportunities Australian farmers and the government give youth in agriculture. Programmes like youth camps and Rural Achievers are not available in other countries and are something I strongly encourage all junior members to get involved in.

I would personally like to thank everyone on the World Congress committee for putting together such a great tour. I would also like to make special thank you to Murray Williams, I believe Murray was the main organiser of the Ambassadors and was a great mentor to me throughout the entire tour.

» Report by Rachael Hancock  
Winner of Australian World  
Congress Scholarship Award

## Photo

- » Alan Wilson and Rachael Hancock enjoying the Congress Tour
- » Dr Erick Otiena Owino and Rachael Hancock with Scholarship facilitator Murray Williams



Conference Tour Party 2014 Australia



Conference Tour Party - 1st International Red Poll Congress 3-14 July 1976



Delegates in the paddock - Koallah Park Stud



Enjoying the parade at Glen Innes



The Abbott Family Whittlesea Show



Studying the cattle at Eurimbla



Farewell lunch at the Gold Coast

## » Red Polls win at the Noorat Carcass Competition

Cleaning up this year's Noorat Show Carcass Competition, winning both its Grand Champion Carcass and Eating Quality sections



Greg Abbott has been the President of the Noorat Show carcass competition for a number of years and this year suggested the idea of an eating competition which was a great success and all guests found very interesting.

It was a great win for the Red polls, as only a month ago at the Colac show the judge commented that the Red Polls were a dual purpose breed and may be better suited to the dairy breed. Each to their own I guess!

Don Castle from Koallah Park at Stonyford won the Grand Champion Carcass sash with a Red Poll and a Red Poll from Greg Abbott "Turanga" stud at Mortlake won the Eating Competition.

The Reserve Champion Carcass ribbon went to Jason and Janine Swayne of Weerite for a Hereford/Simmental/Shorthorn cross.

In the Eating Quality competition, Adam Edge was runner-up with a Highland cross and Sergio Beani from near Colac came third.

The carcass competition this year attracted 47 entries while the inaugural Eating Quality competition had 12.

Competition coordinator Greg Abbott said the competition was a great way for producers to get feedback on whether they were producing for the market's demands.

All entrants in the competition receive detailed information about the carcass they had judged, from meeting market specifications to saleable meat yield and eating quality.

The cattle are processed at Geelong abattoir M.C. Herd and Mr Abbott thanked it for its assistance with the competition.

Judge Daniel Gilmour, formerly with the Department of Economic Development, Jobs, Transport and Resources (which encompasses agriculture) and Dixie beef producer, said the standard of carcasses was really good considering the dry season.

Mr Gilmour said it was "a closely fought contest" to decide the Grand Champion winner.

"There was a good mix of straight and crossbred cattle presented.

"Some cattle missed the specifications for weight," Mr Gilmour said.

Steers won Class 2 (220-279kgs, fat 6-14mm), Class 3 (280-330kgs, fat 8-16mm) and the pen of three while a female won Class 1 (170-219kgs, fat 4-12mm).

Jason and Janine Swayne won Class 1 with a Hereford Angus cross and Class 2 with a Hereford/Simmental/Shorthorn cross that went on to also take out Reserve Grand Champion honours.

Ken Hodge of Mortlake won Class 3 with a Hereford and the Pen of Three.

Mr Hodge last week won the competition's On The Hoof section.

The Grand Champion is drawn from the four classes.

Mr Abbott said the inaugural Eating Quality competition was held to rate beef from consumers' perspective.

Five judges tasted pieces from 12 steaks from 12 carcasses and rated them on Meat Standards Australia criteria that included flavour, tenderness and juiciness.

» Article by Everard Himmelreich 'The Standard', 2 December 2015

### Photos (left to right)

- » Winners: Greg Abbott won the Eating Quality sash and Don Castle the Grand Champion Carcass sash at the Noorat Show Carcass Competition
- » Greg Abbott in the chiller as part of the judging team in Geelong
- » Don Castle's winning carcass

## » Victorian Regional Report

What an exciting year it has been for our Red Poll Breed with two significant events taking place – the World Congress and being feature breed at Sydney Royal



Within our region there were significant contributions to the overall success particularly of the World Congress, for which those concerned should be very proud and know that they did make a very positive difference for Red Polls, not to mention a wonderful opportunity to network with breeders and like enthusiasts from around the world!

To those members who were able to support both the World Congress and the Feature Show, thank you very much, as it is a major effort to do both in the one year. I hope you made it out the other side in one piece and with a great sense of achievement and positive way forward for Red Polls that we need to harness.

Congratulations to the Storm family on their great success of Supreme Exhibit at our Whittlesea Red Poll World Congress Show – an outstanding achievement.

I would also like to acknowledge and thank the Whittlesea Show society for their outstanding support, which contributed greatly to the overall success of our World Congress Show.

Even though not directly related to our Victorian region, I also want to acknowledge and congratulate Murray Williams of Yongerellen Stud in WA on achieving Supreme Exhibit at the Sydney Royal Feature show. To travel your cattle from one side of the country to the other and then have them presented in top condition and achieve a Supreme Exhibit at a Royal Feature is something that shouldn't be underestimated and afforded due credit.

Our field days have again been well supported and at our meetings throughout the year we have had good discussions and constructive feed back of the ongoing viability of attending some of the field days. As any good business should, we must continue to assess feasibility, the plus and minus aspects versus costs, check alternatives, and make our decisions accordingly. There are moves afoot to assess the viability for next year of the weekly times rural lifestyle expo held at Ballarat in April.

It has been great to see such improved prices at markets over the past few months. Let's hope this continues and becomes the norm rather than just a welcome spike.

I encourage everyone to communicate with each other, share information openly, let members know about your projects and successes, this will allow us to provide positive, up to date Red Poll information through our social media tools.

The more we put positive, accurate information and/or data about Red Polls out there, the more the industry will take notice. It's up to us as breeders to drive this and provide the information for input.

Thanks very much to all those who have worked tirelessly again throughout the year to support our Victorian region and the great Red Poll cattle we breed.

» Report by Gay Ward

### Photo

» Watching the Red Poll judging at the Melbourne Show

### Red Poll Feature and First All Breeds Bull and Female Sale at Euroa 14th October 2015

This was organized by the Sale Committee in conjunction with Landmark, Rodwells and Elders. Unfortunately the date selected clashed with the activities in WA but members supported the Sale with 83 Red Polls and Red Poll Crosses.

The Sale turned out to be tough for Bull Vendors as there was a large pass-in percentage. All Red Polls and crosses were sold with the exception of 1 bull. Prices dropped off from previous weeks as the dry season has made buyers nervous.

Vendors who supported the Red Poll Sale were Ross Draper, A Eberhardt, Mark and Elke Harris, Pat McCormick, Carlie Mackelman, Alan and Judy Munro, Douglas Payne, and Nell and Ian Staff. Thanks go to all those people for their continued support of the Red Poll Group with relatively short notice. The Agents at Euroa spent a large amount of cash to advertise the event and intend to make it an annual event with different breeds as the feature breed.

## » South Australian Regional Report

Normality has returned now that the World Congress is over although there have been some pleasant developments



*Annabel Ritchie leading Moyle Park Langdon at the 2015 Jamestown Show*

We have increased our membership with the addition of John Stockham's 'Regaler Red' stud and a junior member, Cassie Hughes forming 'Wilsdonview' stud. John purchased four Red Poll cows in calf with female calves at foot and Cassie bought a cow and heifer calf. David Lines of 'Stockridge' stud is in his third year and there has been other interest shown.

Adelaide show exhibitors increased with the participation of Stormley from Victoria and we fielded four heifers at the S.A. Heifer Expo as well as involvement in the S.A. Beef Field Days and four local shows. In all, it was a very positive year for Red Polls.

Peter Wilson has replaced Richard Daley on the Federal Executive but Richard is continuing as Regional President. Our AGM was held in Adelaide in July and our February lunch meeting at the Terminus Hotel at Balaclava has become our main planning meeting.

It was a pleasure to host Briony Looker to this year's S.A. Heifer Expo. She was so enthusiastic and capable. With Cassie Hughes and Tiana Poulton from Booleroo, and Damon Sims from Sheffield, Tasmania they formed an excellent team. Cassie was placed in the

top line in her very competitive class and Tiana won the Novice award. Cassie and Tiana teamed with Annabel Ritchie to manage and show the Moyle Park cattle at Adelaide and locally. Their mothers are also enthusiastic and these girls are building a reputation among other breeders as very competent, to the extent they have been approached to help with other breeds. This is very good for the Red Poll image.

Adelaide show results were: visitors... nearly everything, locals... very little. Trent Storm brought a very good team over and they caught the judge's eye in every class they were in. Congratulations to Trent. We enjoyed having him. Our steers looked the goods but unfortunately there were no outstanding performers. One won its class on the hoof and several were placed. Our hooks scores were close but not close enough. Surprisingly this year some of our steers were outside the grid limit for fat at the top end which is unusual for Red Polls. There were 14 Red Poll steers in a competition of 200 very well presented animals. While on shows, Moyle Park sent a cow and calf to the Sydney Feature Show. Doug Giles, from W.A. picked them up on his way through with an excellent contingent of W.A. Red Polls.

The NSW Region did very well to get enough numbers to hold a Feature Show and it will be awhile before you will see such a wonderful line up of any breed of cows and calves again at any show as we saw in Sydney. Most of our breeders reported a good year for feed growth with early rains followed by a cold wet winter. Unfortunately, the rains finished off early again. As most of us are grain producers as well, the early finish reduced what was going to be a bumper harvest to very average. The stubbles will be good pasture though. Some areas had unseasonal heavy rains in November after two weeks of very hot weather. Jamestown got 95mm of rain with 75mm falling in 90 minutes. Fortunately there was no wind or hail and the crops seemed to be unaffected. With the much improved price for beef the loss of yield will not be as critical as in past years. The good prices have reflected the increase interest in bulls and several breeders have said that the expectation of good returns for beef is noticeable in the price purchasers are paying for bulls.

A happy and prosperous New Year to you all from S.A.

» Report by Richard Daley

### **GLENWYN RED POLL STUD**

**C. MACKELMANN**

208 JENKINS ROAD, CONGUPNA VIC 3633

**Ph: (03) 5829 9855**

Email: carlie.mackelmann@gmail.com

### **MALEER RED POLL STUD**

**CJ & DM MALONE**

PO Box 47, JAMESTOWN SA 5491

**Mob: 0418 807 414**

Email: maleer4@bigpond.com

# » Western Australian Report

The region has had a very busy but successful year



Members turned on an outstanding display of cattle and events for the World Congress tour and all are to be congratulated on their efforts. In particular their willingness to cooperate to provide an interesting and diverse tour for the group was outstanding.

It did however exhaust a lot of time and energy and so much of the past year has simply rolled by.

Cattle have been shown at regional shows and we again managed a great display at Perth Royal with over twenty head from six exhibitors.

Red Sands and Yongerellen Studs exhibited with success at the Red Poll Feature Show at Sydney Royal. Yongerellen Wattle Janelle exhibited by J.H. Williams and Co was judged Supreme Red Poll. Three WA senior sires opened the eyes of other breeds when they averaged 1,140 kg.

Bull sales have been slow and difficult and the lack of a market for good cattle is of serious concern.

It was a little difficult to raise the required enthusiasm to host the new style AGM and accompanying herd visits, so close to the World Congress. However, members are to be congratulated for the interesting herd tour that was well received by the visitors. As well as the obligatory AGM this relaxed style away from the rigors of a Show was a popular format. Plenty of discussions evolved between members of different regions and it is a sign of the great bond between WA members who worked together for a common good.

The reduction sale of Red Sands and Yongerellen females ushered in a new era in Red Poll sales using the AuctionsPlus system. Animals sold for solid values to local and interstate purchasers, both stud and commercial.

Animals were sold to seven purchasers from QLD, NSW and WA through a system with which many were not familiar but seemed to work well and fairly for all. Top priced lot Red Sands Mandissa sold to I A and J Coghlan, 'Eurimbla', Gerogery NSW for \$2,600.

The scenery, the farms, the cattle and the hospitality of the region.

Thank you WA Region!

» Report by Murray Williams

## Photos (left to right)

- » Herd Tour WA
- » Ranfurley stud
- » W. Owston and M. Williams
- » Coranning stud

## » Northern NSW Region/Queensland Report

Once again, the members of the Queensland Northern NSW Region have had a busy time



In November 2014 our region hosted the World Congress which turned out to be a highlight for their three week trip around Australia. Many thanks go to the members who helped out at the Glen Innes showgrounds and bought cattle in for people to see. I was told afterwards, that the lunch provided and how the lunch room was organised was one of the best set ups of the trip. I would like to specifically mention the youth involvement on the day and the way the youth conducted and presented themselves to the international visitors was truly an achievement and something for the breed to be proud of.

Events such as Beef 2015 in Rockhampton, Farmfest in Toowoomba, The Land Northern Beef Week and Ekka where supported well this year. In particular Ekka was a great success, due to small numbers over the last couple of years we didn't receive Junior Champions however we can boast this year that we had a total of 15 head stud cattle and 4 pure steers on display.

Big congratulations to the junior members who exhibited this year at the royal and in particular Cameron Jones who won both the Champion Male and Champion Female. This is the second time Cameron has won these titles with the same animals back to back, an achievement very few stud breeders can say they have ever accomplished. Our judge this year was a Mr Berry Reynolds a Red Angus breeder from

Toowoomba, who was impressed by both our females and males. This year seemed to be the busiest for us in terms of enquiries about our cattle, with many people enquiring about cattle to purchase. I have no doubt that this is due to the hard work and positive attitudes of the members in our region.

Congratulations to our youth member Briony Looker on winning the South Australian scholarship run by the Red Poll National Executive. This is a great achievement and a worthy recipient. As you will see from Briony's report she gained a lot of experience and knowledge from the South Australian Heifer Show.

Our youth camp seems to be getting better and better each year! Over the past two camps the youth committee have aimed to get more Red Poll members nationally involved. This has been done through sponsorship and social media.

Big thanks go to the Red Poll members not in our region that have supported this great youth event.

I have been President of this region for many years now and it gives me great satisfaction to see how far this region has come. We now run a successful youth camp yearly, have a strong presence in the show ring and are looked at by other regions and breeds as strong and active. The new members that have signed up over the past two years are more than the number signed up in the past 10. I would like to thank all members for their efforts over the past years, it is truly is a credit to you all.

As outgoing president I welcome Tim Light as our new President, I have no doubt that Tim will push the breed and support our region as I have. A special note must also go to our outgoing Secretary, Vicki Light. Our region is grateful for your efforts and time over such a long period.

» Report by Albert Hancock

**WILANSTIE**  
**RED POLL STU**

*Breeding Red Poll cattle that perform in the paddock year in year out*



**NEW STU SIRE**  
**EURIMBLA LEROY**  
BW +2.7    200day +14  
400day +27    600day +33  
SS +1.0    EMA +0.6

**Contact Steve & Kristie Williams**  
Ph 07 4697 1615 or 0421 281 855 Email [steve76kristie@gmail.com](mailto:steve76kristie@gmail.com)  
"Goondidi" 364 Woodlands Rd Greenmount QLD 4359  
**Enquiries always welcome**



## » New South Wales Report

After so much preparation, the Sydney 2015 Feature Show came and went in a flurry, leaving behind a score of awards and accolades as a testament to the hard work and dedication of the exhibitors



It was only through the support and commitment of everyone involved that enabled us to yield such fantastic results. Their dedication allowed for the general public to interact with the highest quality stud stock, and allowed them to witness an extremely competitive environment in the show ring.

There were many people whose work contributed to the success of the Red Poll Feature including the support of our National Executive and once again we thank everyone involved.

The display looked fantastic and was a large focal point in the shed, drawing in members of the public and interested parties alike who hadn't previously heard of our breed before. This was supplemented further with the outstanding way our exhibitors really went above and beyond with their own stall displays, and really drew positive attention to the "Red & Green".

Judging day arrived all too soon with a mixture of excitement and apprehension. Judge Michael O'Sullivan had his work cut out for him but his experience in cattle breeding, custom feeding, show preparation and Red Poll cattle

enabled him to explain to the observer and exhibitor the type of cattle he was looking for and why. Michael's criteria was for easy doing cattle that combine high fertility, longevity, high yield and carcass quality. Although our numbers were not as high as we had hoped Michael was extremely pleased with the quality of animals paraded before him and repeatedly complimented breeders to that effect.

Refreshments after judging were extremely welcome and the culmination of the helmsman sale at that point added a little extra buzz to a great day. Clearance rates were a little down but successful vendors were happy with prices.

Dinner at the Novotel saw approx. 90 people attend and although this caused some seating challenges for Novotel Management the highlight of the evening was undoubtedly the Auction conducted by the Red Poll Youth committee. This event is a classic example of why we need young people participating in our breed societies. The auction was conducted with a mixture of contagious enthusiasm, hilarity and a number of "dodgy bids" ensuring all items sold well.

Congratulations to all of you, it was a great night.

A feature is about showcasing a breed, and it's our job to highlight why the breed can become a positive addition to commercial herds. The feature gave us a platform to talk about why we breed Red Polls.

Whether or not our voice was heard is dependent on time. We know why Red Polls are fantastic - but did we use this 2015 feature to make sure everyone else did too? One means of providing evidence of these beef attributes is through carcass competitions - and this is where our steers excelled.

There were 12 purebred steers and 2 Red Poll x trade steers entered. Of the purebred steers the awards given were 1 Gold, 4 Silver and 4 Bronze and in the trade competition one of the steers won the virtual taste test. Average points for purebreds was a staggering 83.75!

We had exhibitors from every region in Australia! A mighty effort! Again, thank you to everyone who helped make this happen and we look forward to a bigger and better 2016!

» Report by Garrick Mulcahy

### Photos (left to right)

- » In preparation for judging
- » Carcass ribbons for Prairiewood High Red Poll steers
- » Sydney Feature Show attendees

**LAGOONA RED POLL STUD**

RA, VA, TD & EL LIGHT

**"LAGOONA"**

191 DUMARESQ ROAD, ARMIDALE NSW 2350

Ph: (02) 6775 1129 Mob: 0458 744 552

Email: lagoona191@bigpond.com

1608916

# » Membership Directory

## NSW - Full Members

### A. Carroll & B. Adams

C/- Long Flat Post Office  
Long Flat NSW 2446  
P: 02 6587 7212  
M: 0434 626 082  
andrew.l.carroll18@gmail.com  
BBH BOTTLEBRUSH HILL

### M.J. Bassula

PO Box 197  
Tumbarumba NSW 2653  
P: 02 6948 4098  
M: 0427 482 289  
redphoenixone@skymesh.com.au  
HMB RED PHOENIX

### B. Clarke

7 Richardson Street  
Goonellabah NSW 2480  
P: 02 6624 1268  
B RHOSLLAN

### I.A. & J. Coghlan

Eurimbla Red Poll Stud  
148 Rodgers Road  
East Gerogery NSW 2642  
P: 02 6026 0630  
Work: 02 6051 9871  
icoghlan@csu.edu.au  
IJC EURIMBLA

### J. Conroy

Semex Pty Ltd  
PO Box 509  
Melton VIC 3337  
P: 03 9743 0344  
semex@semex.com.au  
SMX SEMEX

### R.E. & F.R. Drysdale

285 Upper Rollands Plains Rd  
Rollands Plains NSW 2441  
P: 02 6585 8022  
M: 0427 858 022  
willorn47@bigpond.com  
KFD WILLORN

### E. Herbert

228 Peel St  
Bathurst NSW 2795  
P: 02 6332 3745  
lazytok@southernphone.com.au  
TOK LAZY TOK

### N. & D. Khan

221 Wharf Road  
Johns River NSW 2443  
P: 02 6556 5508  
M: 0425 290 394  
nick\_khan@hotmail.com  
NDK RED DOOR

### G. Mulcahy

1027 Horsley Drive  
Wetherill Park NSW 2164  
P: 02 9604 5846  
M: 0418 417 899  
garrick.mulcahy@bigpond.com  
GJM WIRAKIE

### L. Salzke

5 Bowler St  
Braidwood NSW 2622  
M: 0428 759 685  
teash\_13@hotmail.com  
JLS JACKPOT

### J.A. Smith

Glenrossal  
1201 Mayfield Rd  
Via Tarago NSW 2580  
P: 02 4842 7188  
M: 0412 332 640  
jude.anne@hotmail.com  
DAS GLENROSSAL

### K. & M. Smith

1268 Gurrundah Rd  
Goulburn NSW 2580  
P: 02 4829 2121  
M: 0409 449 420  
keimoi.cattle@gmail.com  
KMS YARRA

### M. Smith

1201 Mayfield Rd  
Tarago NSW 2580  
P: 02 4842 7188  
M: 0429 191 145  
RCS RED CEDAR

### N. & M. Sorial

Wongajong  
226 Gurrundah Road  
Baw Baw NSW 2580  
P: 02 4822 8402  
M: 0410 483 014  
wongajong\_farm@bigpond.com  
MCS MCSORIAL

### D. Summerell

75 Bruce Crescent  
Wallarrah NSW 2259  
P: 02 4393 3033  
M: 0403 573 708  
dylan\_s1@hotmail.com  
SUM REDCLIFF

### R.J. & S.D. Wilkinson

1260 The Northern Rd  
Bringelly NSW 2556  
P: 02 4774 8692  
M: 0413 581 098  
rjwilko\_bal@hotmail.com  
RSW BALADEEN

## NSW - Junior Members

### L. Adler

15 Damsel Crt  
Castle Hill NSW 2154  
P: 02 9894 0677  
M: 0431 662 319  
ladler76@gmail.com  
LAA

### Bellingen High School

PO Box 203  
Bellingen NSW 2454  
P: 02 6655 1315  
bellingen-h.school@det.nsw.edu.au  
BHY BELL-HY

### L. D'Ambros

1 Whitehall Rd  
Kenthurst NSW 2156  
P: 02 9654 3123  
M: 0447 071 736  
LDA

### M. Fairall

Fourways Park-Woburn  
180 Woburn Road  
Harden NSW 2587  
P: 0447 819 749  
micanker@gmail.com  
MAK MICANKER

### J. Johnson

29 Lygon Pl  
Castle Hill NSW 2154  
M: 0432 411 127  
0140jj@gmail.com  
LAJ RED MOON

### Kincumber High School

Bungoona Road  
Kincumber NSW 2251  
P: 02 4369 1555  
M: 0421 761 675  
stephen.r.boyd@det.nsw.edu.au  
KHS KINCUMBER HIGH

### A.J. Leicester

14 Swinbourne Cr  
Wetherill Park NSW 2164  
M: 0403 421 379  
aidan\_itunes@hotmail.com.au  
ANG BABANA

### Model Farms High - Finance Dept

Gooden Drive  
Baulkham Hills NSW 2153  
P: 02 9624 3133  
M: 0404 490 277  
modelfarms-h.school@det.nsw.edu.au  
MFH MODELFARMS

### M. Peacock

49 Reeves Cr  
Bonnyrigg NSW 2177  
P: 02 9822 9841  
M: 0420 899 520  
ppeacock@vtown.com.au  
RBK RED BANK

**J. Vinci**  
27 Powys Crt  
Castle Hill NSW 2154  
M: 0412 092751  
jackov66@hotmail.com  
JVV

**Wauchope High School**  
Nelson St  
Wauchope NSW 2446  
P: 02 6585 1400  
palmerap@bigpond.net.au  
WHS WAUCHOPE HIGH

#### NSW - Commercial Members

**A.K. & H.F. Anderson**  
72 Belhaven Road  
Lorne NSW 2439  
P: 02 6556 9659  
M: 0428 488 417  
aandha@bigpond.com  
\_08

**Ballycastle Pastoral Co**  
Bally Castle  
2063 Range Road  
Goulburn NSW 2580  
P: 02 4829 2353  
M: 0412 481 309  
ballycastle@mac.com  
BPC

**P.M. Bennett**  
Belmore  
Wellington NSW 2820  
P: 02 6887 1218  
Amb Belmore Park

**J. & B. Caddy**  
PO Box 959  
Tamworth NSW 2340  
P: 02 6760 9177  
JBY

**K.R. Carew**  
6 Gray Street  
Henley NSW 2111  
P: 02 9816 4572  
M: 0419 997 328  
keithrcarew@gmail.com  
KRC

**R. Carolin & J. Hughes**  
Oak Park  
PO Box 25  
Berry NSW 2535  
P: 02 4464 2149  
billarr@shoalhaven.net.au  
BLR BILLARR BILLARR

**K.H. & K.B. Corbett**  
5 Gillett St  
South Grafton NSW 2460  
P: 02 6642 6315  
KKC

**D. Avard-Percival**  
23 Scenic Drive  
Gillieston Heights NSW 2321  
P: 0478 084 194  
daneaap@hotmail.com  
DPL

**B.G. Godfrey**  
Hurie Park  
553 Wherrol Flat Road  
Wherrol Flat NSW 2429  
P: 02 6550 7297  
HRG HURIE PARK

**D. & A. Holmes**  
1038 Sandy Creek Rd  
Quorrobolong NSW 2325  
P: 02 4998 6064  
d-holmes@bigpond.net.au  
DAH SUNNYBROOK

**G.C. Marshall**  
Coomalgah  
575 Westbrook Rd  
Singleton NSW 2330  
P: 02 6577 5617  
RAV RAVENSWORTH

**P. E. Munge**  
Shannon  
Guinema Road  
Bugaldie NSW 2357  
P: 02 6843 4459  
pcmunge@bigpond.com  
PEM

**G.W. Rumbel**  
Salisbury  
Dungog NSW 2420  
P: 02 4995 3215  
GWR HARDVIEW

**G.R. Wollen**  
Buckandor  
Red Range  
PO Box Glen Innes NSW 2370  
P: 02 6734 2231  
grwollen@bordnet.net.au  
GWN

#### NNSW/QLD - Full Members

**B.A. & L.T. Beckham**  
PO Box 154  
Casino NSW 2470  
P: 02 6663 7127  
M: 0409 032 218  
TQY TRANQUILITY

**J. Bockman & J. Rhea**  
Culgoa  
408 Bezzants Road  
Deepwater NSW 2371  
P: 02 6734 5422  
M: 0437 551 842  
jack.n.jill@bigpond.com  
TBK TANAMERAH

**G.J. & D.I. Brassington**  
PO Box 20  
Helidon QLD 4344  
P: 07 4697 6090  
GDB BROADACRE VALLEY

**R.G. Burness**  
PO Box 448  
Coolangatta QLD 4225  
P: 07 5590 7148  
M: 0404 239 923  
HT MOA VALE

**K.A. & M.R. Clarke**  
PO Box 324  
Bellingen NSW 2454  
P: 02 6655 0202  
M: 0456 109 246  
michael.r.clarke@gmail.com  
MBV MISTY BELL VISTA

**R.C. & A.C. Dawes**  
Rosemont  
Piggabeen Rd  
Piggabeen NSW 2486  
P: 07 5590 9463  
RJ PICCABEEN VALLEY

**M.C. & D.J. Dillon**  
8 Dillons Lane  
Alstonville NSW 2477  
P: 02 6628 0369  
M: 0414 280 369  
d.j.dillon@westnet.com.au  
AMD INGLEWOOD

**Longley Red Poll Stud**  
97 Dyraaba St  
Casino NSW 2470  
P: 02 6660 1108  
M: 0011 44 1484 685 599  
chriss@richdairies.com  
FFI LONGLEY

**R. Angas-Freney**  
407 Goldburg Rd  
North Deep Creek QLD 4570  
M: 0407 142 213  
rangas6@bigpond.com  
HCA TARRA

**A.J., R.M & D.J Hancock**  
Yarraldool  
Pinkett Road  
Glen Innes NSW 2370  
P: 02 6733 4666  
M: 0432 581 493  
hancock45@hotmail.com  
RAH KOOKABOOKRA

**P. Hancock**  
Wellrock  
110 Blacks Road  
Glen Innes NSW 2370  
P: 02 6732 5038  
PMH GLENLEIGH

**L. Herzig**  
PO Box 39  
Clifton QLD 4361  
P: 07 4697 3204  
LDH TALGAI VALE

**D. Jensen & K. Goulding**  
PO Box 3045  
Lismore NSW 2480  
P: 02 6663 1206  
M: 0428 221 077  
katgo@mullum.com.au  
KAT MINYON

**N. & P. Lee**

Bindaree  
51 Claremont Rd  
Quirindi NSW 2343  
P: 02 6747 4674  
M: 0429 990 388  
abbottlee@bigpond.com  
NAL OMEGA 3

**R.A., V.A., T.D. & E.L. Light**

Lagoona  
191 Dumaresq Rd  
Armidale NSW 2350  
P: 02 6775 1129  
M: 0458 744 552  
lagoona191@bigpond.com  
TEL LAGOONA

**C.I. Pateman-Ryan**

281 Montrose Lane  
Greymare QLD 4370  
M: 0458 680 224  
chikera\_louise@hotmail.com  
MRL MAREL

**O. & A. Reinhardt**

23 Mcclung Street  
Gungahlin Act 2912  
M: 0411 253 933  
owen@peppervale.com.au  
OAR PEPPERVALE

**K. & N. Usher**

62 Munday's Lane  
Saumarez Ponds NSW 2350  
P: 02 6775 1069  
M: 0408 073 427  
kim.usher@une.edu.au  
NLC RED RUSH

**S. & K. Williams**

Goondidi  
364 Woodlands Rd  
Greenmount QLD 4359  
P: 07 4697 1615  
M: 0428 458 535  
steven.williams@dnrm.qld.gov.au  
WIL WILANSTIE

**NNSW/QLD - Junior Members****Krystal Cagney**

Raino  
Grove Road  
Bundarra NSW 2359  
M: 0447 222 262  
KCV VALKERIE

**E. Cunningham**

Carndhu  
1 Carndhu Road  
Armidale NSW 2350  
P: 02 6775 8345  
M: 0499 221 528  
freddie.74@live.com  
ECL ROCKVIEW

**C. Devlin**

198 Morelma Rd  
Mt Russell NSW 2360  
M: 0407 006 586  
tara.m.jones88@hotmail.com  
JCD

**E. Devlin**

198 Morelma Rd  
Mt Russell NSW 2360  
M: 0407 006 586  
tara.m.jones88@hotmail.com  
JED

**B. Gardner**

3 Zircon St  
Inverell NSW 2360  
P: 02 6722 4008  
M: 0467 189 511  
bailey@bobjamiesonagencies.com.au  
BGJ

**Z. Hamilton**

Willow Park  
Willow Park Rd NSW 2365  
P: 02 6775 8327  
YC1

**Cameron D Jones**

Raino  
Grove Road  
Bundarra NSW 2359  
P: 02 6723 3112  
CDJ ROSELEE

**B. Looker**

'Braedownnie'  
Blue Hills Rd  
Glen Innes NSW 2370  
P: 02 6732 2254  
M: 0488 527 949  
briony\_lookor@yahoo.com  
JBL

**J. McClenaghan**

270 Chandler Rd  
Thalgarrah NSW 2350  
P: 02 6775 1715  
M: 0417 751 715  
reenvale@activ8.net.au  
JES LITTLELENAGHAN

**J. Mckemey**

'Wattle Grove'  
Guyra NSW 2365  
P: 02 6779 1096  
dkmckemey@gmail.com  
JJM

**C. Mckemey**

Wattle Grove  
Guyra NSW 2365  
P: 02 6779 1096  
M: 0427 758 347  
dkmckemey@gmail.com  
CLM

**M. McNamara**

House 5  
Trawalla  
Pallamallawa NSW 2399  
P: 02 6754 9498  
M: 0447 166 996  
mathew.mcnamara1@education.  
nsw.gov.au  
MCN

**Farm  
Business  
Commercial**



**Domestic  
Liability  
Tools of Trade**

***"Please call for an obligation free quote on all your insurance needs"***

**Georgia Mallia**

**Tier 1 Insurance Broking - Insurance Sales Manager, Central VIC**

**Mob: 0428 302 928 Rep No 412951**

Ruralco Holdings Limited are Authorised Representatives Of:

\*NAS Insurance Brokers - ABN: 60 096 916 184 AFS Licence No: 233750 \*CGU Insurance - ABN: 27 004 478 371 AFS LICENCE NO: 238291

**E. Moffitt**

Glen Top  
977 Cherry Tree Hill Rd  
NSW 2403  
P: 02 6724 8562  
M: 0429 482 116  
moffittemily98@gmail.com  
EMJ

**H. Mordue**

10 Glen Innes Road  
Armidale NSW 2350  
P: 02 6771 2089  
M: 0457 065 779  
haylstones5@gmail.com  
HLM

**M. Morgan**

'Coolibah'  
Glasses Road  
Guyra NSW 2365  
P: 02 6779 7665  
coolibah07@bigpond.com  
MMG

**L. Newberry**

572 Square Range Rd  
Glen Innes NSW 2370  
P: 02 6733 4653  
M: 0438 324 606  
thewildnewberrys@activ8.net.au  
YC2

**J. & B. Rohde**

Bethlee  
Pallamallawa NSW 2399  
M: 0427 071 736  
M: 0400 233 544  
justin.rohde@scotspgc.qld.edu.au  
RBJ

**S.W., L.J., P.J., B.J. & K.J. Sullivan**

'Rosedale'  
375 Evertonvale Rd  
Uralla NSW 2358  
P: 02 6778 3423  
M: 0428 783 423  
bjkjsullivan@gmail.com  
KBS ROSEDALE

**G. White**

108 Wheatley St  
Bellingen NSW 2455  
M: 0429 637 212  
GWH

### NNSW/QLD Commercial Members

**I. & J. Hopper**

Callemondah  
Porter's Gap MS 360  
Bell QLD 4408  
P: 07 5594 0980  
CMH CALLEMONDAH PARK

**I. & B. Hutchinson**

Wirrabilla  
Limestone Ridges Rd  
Peak Crossing QLD 4306  
P: 07 5467 2136  
M: 0410 431 850  
jindavick@bigpond.com  
BIH JINDAVICK

**D.J. & D.P. Kennedy**

Po Box 79  
Mackay QLD 4740  
P: 07 4958 8081  
M: 0428 588 081  
kennedydjdp@skymesh.com.au  
DDK

**K. Looker**

1 Forster Avenue  
Armidale NSW 2350  
M: 0429 359 320  
briony\_lookor@yahoo.com  
LKR

**P.W. Muller**

51 Merino St  
Toowoomba QLD 4350  
P: 07 4635 1471  
M: 0487 171 835  
peter.muller5@bigpond.com  
PWM

**B. K. Munt**

Rhodesmount  
3539 New England Highway  
Wutul QLD 4352  
P: 07 4692 6196  
btasmmunt@skymesh.com.au  
\$67

**G.A. & J.J. Wehl**

36 Mt Rascal Road  
M/S 1497  
Toowoomba QLD 4350  
P: 07 4630 1109  
M: 0428 717 178  
jeanette.wehl@gmail.com  
MTR RED RIDGE

### Victorian - Life Members

**K.G. & M.J. Baxter**

840 Ardmona Rd  
Mooroopna VIC 3629  
P: 03 5829 0122  
KGB CLOVERLEA

**R. Draper**

75 Running Creek Rd  
Arthurs Creek VIC 3099  
M: 0428 510 252  
redcactus@bigpond.com  
MRD RED CACTUS

**H.M. Spalding**

5 Harding Grove  
Cardigan Village VIC 3352  
P: 03 5344 8344  
ACE CATHRO

### Victoria - Full Members

**G. Abbott**

625 Grinters Lane  
Kolora VIC 3265  
P: 03 5592 7224  
M: 0438 922 313  
gk.abbott@bigpond.com  
EMA TURANGA

**T. & A. Arnold**

1075 Echuca Rd  
Mooroopna North VIC 3629  
P: 03 5829 0289  
M: 0418 549 031  
arnold.a.t@bigpond.com.au  
TAA GLEN ALVIE

**Cabbage Tree Hill Pastoral Co.**

PO Box 123  
Buninyong VIC 3357  
P: 03 5341 3133  
M: 0419 547 181  
redhotpolls@aanet.com.au  
CTH RED HOT

**D. R. Castle**

2205 Princes Hwy  
Stoneyford VIC 3260  
P: 0417 169 914  
DBC KOALLAH PARK

**D. J D'Oliver**

PO Box 227  
Pakenham VIC 3810  
P: 03 5664 9387  
stcerry@gmail.com  
DJD ST CERRY

**A. & E. Hancock**

105 Browns Road  
Timboon VIC 3268  
M: 0412 780 634  
M: 0406 545 148  
elizabeth.coghlan@gmail.com  
ALH REGALIA

**M.E. & E.A. Harris**

230 Cams Road  
Lang Lang VIC 3984  
P: 03 5997 8340  
M: 0408 366 506  
meharris1@bigpond.com  
KET KETLANG

**B.E. & L.E. Johnson**

395 Extons Road  
Kingleke Central VIC 3757  
P: 03 5786 1431  
be.johnson@bigpond.com  
BLJ LYNBARRY

**Leeder Bros.**

43 Houston Street  
Donald VIC 3480  
P: 03 5497 1336  
M: 0458 971 336  
LBI THORNFIELD

**D. & S. McAlinden**

395 Gellibrand East Rd  
Gellibrand VIC 3239  
P: 03 5235 8222  
M: 0409 275 112  
damian.mcalinden@bigpond.com  
RMS RUA MOR

**F.J. & M.D. McCormack**

PO Box 59  
Mansfield VIC 3724  
P: 03 5775 2074  
M: 0409 951 903  
F+M CYPRESS

**N. Moralee & Sons**

PO Box 77  
Stratford VIC 3862  
P: 03 5145 8245  
MPM BROOKLEA

**F. & A.K. Moya**

560 Seven Mile Road  
Nar Nar Goon VIC 3812  
P: 03 5942 5473  
a.k.moya@bigpond.net.au  
MFA TIRASLEA

**A. & J. Munro**

134 Moormbool Road  
Costerfield VIC 3523  
P: 03 5794 9219  
M: 0407 949 219  
SBR SUMMER BRAE

**D.N. Payne**

PO Box 160  
Kilmore VIC 3764  
P: 03 5782 1002  
dnpayne@bigpond.net.au  
HP WOODBURN

**J. Rand**

Balla Balla  
1300 Baxter-Tooradin Rd  
Cannons Creek VIC 3977  
P: 03 5998 2212  
M: 0419 337 760  
judyrand@ozemail.com.au  
BAL BALLA BALLA

**R.T., V.M., T.R. & J. Read**

965 Pinegrove Sth Road  
Tennyson VIC 3572  
P: 03 5488 2266  
M: 0428 332 793  
gumleypark@skymesh.com.au  
TRR LINCOLNDELL

**I.A. & N.F. Staff**

65 Burtons Road  
Pheasant Creek VIC 3757  
P: 03 5786 5251  
M: 0411 314 501  
ianstaff@techinfo.com.au  
NIS SOPHRONITES

**S Storm & Sons**

51 Neimur Street  
Barham NSW 2732  
P: 03 5453 2140  
stormley@dragnet.com.au  
SJS STORMLEY

**Gay Ward**

PO Box 460  
Altona North VIC 3025  
P: 0417 558 508  
honerv@gmail.com  
DGW REDWARD

**Victoria - Junior Members****B. Holding**

21 Peregrine Pl  
Carrum Downs VIC 3201  
P: 03 9776 4154  
GJH

**C. Mackelmann**

Glenwyn Red Poll Stud  
208 Jenkins Road  
Congupna VIC 3633  
P: 03 5829 9855  
carlie.mackelmann@gmail.com  
CMC GLENWYN

**Victoria - Commercial Members****R.P. & J. Aitken**

457 Velore Rd  
Denison VIC 3858  
P: 03 5149 2467  
jewels@wideband.net.au  
RJA

**W. L. Bath**

PO Box 50  
Balmoral VIC 3407  
P: 03 5570 1327  
WLB BILTMORE

**J. Buxton**

PO Box 27  
Stratford VIC 3862  
P: 03 5147 2403  
jcbuxton3@bigpond.com  
JBN

**M. & J. Francis**

834 Bolgers Road  
Devon North VIC 3971  
P: 03 5185 1283  
M: 0417 878 411  
womerahgully@bordnet.net.au  
WGM WOMERAH GULLY

**J. & L. Hirniak**

171 Terka Road  
Kirkstall VIC 3283  
P: 03 5565 9223  
M: 0438 849 615  
jlkhirniak@bigpond.com  
HIR

**R. J. Kelleher**

Navarre VIC 3384  
P: 03 5357 4100  
RJK

**P. Mawdsley**

445 Mardan-Dumbalk Road  
Dumbalk VIC 3956  
P: 03 5664 1372  
M: 0413 455 456  
info@finmawfarm.com.au  
FMF FINMAW

**P. & J. McAninly**

30 Bodmans Rd  
Won Wron VIC 3971  
P: 03 5182 5899  
PJM

**M. Neal**

PO Box 861  
Strathfieldsaye VIC 3551  
P: 03 9735 0093  
M: 0447 370 926  
mneal@lorham.com.au  
MJN HELIX

**B. & T. Nutting**

Box 47  
Hawkesdale VIC 3287  
P: 03 5560 7304  
BTN

**J.D.E Payne**

PO Box 160  
Kilmore VIC 3764  
P: 03 5782 1002  
JDP

**T.W. Robbins**

Indophil Resources NI  
25 Marissa Crescent  
Greensborough VIC 3088  
P: 03 8620 5800  
M: 0419 380 301  
tony.robbins@indophil.com  
NAA NATHANA

**M. & K. Tyquin**

PO Box 917  
Kyneton VIC 3444  
TYQ LIBERTY FLAT

**M. Weston & P. Randall**

1 Sth Boundary Rd (East)  
Somerville VIC 3912  
P: 03 5978 7788  
M: 0431 134 714  
peterran1@bigpond.com  
[WR]

**South Australian - Life Members****A. C. Wilson**

Oakwood  
Brentwood  
Via Minlaton SA 5575  
P: 08 8853 4223  
M: 0428 434 534  
wilsonbeef@hotmail.com  
RMW OAKWOOD

**South Australian - Full Members****Dr R.W.R. & K.L. Daley**

PO Box 169  
Jamestown SA 5491  
P: 08 8664 1463  
M: 0438 641 463  
moylepark@ozemail.com.au  
MPS MOYLE PARK

**J.K. Graham & Co.**

PO Box 130  
Ardrossan SA 5571  
P: 08 8837 3327  
M: 0438 373 577  
vkrowntree@gmail.com  
KGW VIRANGRA

**D.S. & S.J. Lines**

PO Box 712  
Gawler SA 5118  
P: 0415 797 506  
david@stockridge.com.au  
SRR STOCKRIDGE

**Maleer Partners**

C.J. & D.M. Malone  
PO Box 47  
Jamestown SA 5491  
P: 08 8665 4037 (Chris)  
P: 08 8664 0979  
maleer4@bigpond.com  
VJM MALEER

**W.J. McCallum**

PO Box 133  
Booleeroo Centre SA 5482  
P: 08 8666 6062  
MDS WINDY PLAINS

**J. Stockham**

PO Box 51  
Woodside SA 5244  
P: 08 8538 7027  
REG REGALER RED

**P. Wilson**

PO Box 251  
Minlaton SA 5575  
P: 08 8853 4104  
M: 0408 534 071  
pcklwilson@hotmail.com  
405

**South Australian  
Junior Members**
**C. Hughes**

PO Box 245  
Booleeroo Centre SA 5482  
M: 0448 294 331  
casskyllie@gmail.com  
WDV WILSDONVIEW

**South Australian  
Commercial Members**
**P.J. & C.A. Hay**

PO Box 246  
Lobethal SA 5241  
P: 08 8389 6795  
HAY RUBY LACE

**R.H.W. & S.D. Sampson**

PO Box 176  
Strathalbyn SA 5255  
P: 08 8536 6021  
\$66

**T.A. & H. Sismey**

Box 1161  
Naracoorte SA 5271  
P: 08 8762 3186  
TJ OTWAY

**Western Australian  
Life Members**
**M. Williams**

PO Box 100  
Quairading WA 6383  
P: 08 9645 5220  
M: 0429 455 220 (text only)  
yongerellen@activ8.net.au  
J6H YONGERELLEN

**Western Australian  
Full Members**
**Coranning Pty Ltd**

1460 North Wandering Rd  
Wandering WA 6308  
P: 08 9887 6030  
M: 0429 944 683  
coranning@westnet.com.au  
NB4 CORANNING

**E. & J. Ghilarducci**

1189 Brookton Highway  
Karragullen WA 6111  
P: 08 9097 5936  
ghilej@yahoo.com.au  
EIG KARRADACE

**H. Goad**

108 Coventry Rd  
Roleystone WA 6111  
P: 08 9390 6196  
M: 0488 378 444  
bellahwayrural@outlook.com  
HG3 BELLAHWAY

**R. & B.V. Hall**

14 Brockman Street  
Beverley WA 6304  
P: 08 9646 1972  
PH3 HALLMARK

**Q. & S. Hooper**

PO Box 94  
Wembley WA 6913  
P: 08 9242 8894  
M: 0419 041 220  
redsandsredpoll@yahoo.com.au  
QPH RED SANDS

**N. Burgess & F. Viney**

2 Ciro Road  
Kelmescott WA 6155  
M: 0412 966 904  
burgo1000@gmail.com  
NTB JUNIPER

**W. & B. Owston**

PO Box 34  
Serpentine WA 6125  
P: 08 9525 7566  
M: 0428 116 103  
ranfurlyrp@yahoo.com  
WMJ RANFURLEY

**C. Whitely**

55 Henry Road  
York WA 6302  
P: 08 9622 3659  
M: 0429 205 824  
catherine.whitely@cba.com.au  
CL6 AURORA

**Western Australian  
Junior Members**
**Luke & Alex Longford**

PO Box 100  
Quairading WA 6383  
M: 0417 188 776  
M: 0428 940 379  
gemike@westnet.com.au  
LA6 LE TOPAZ

**New Zealand - Full Members**
**Martinvale Farms Ltd**

62 Taylor Road  
Rd1 Waitotira 0193  
New Zealand  
P: 0064 9432 9087  
mvfarms@ihug.co.nz  
QVA MARTINVALLE

## » Advertising Index

Eurimbla.....	page 19
Glen Leigh.....	page 9
Glenwyn.....	page 30
Ketlang.....	page 11
Koallah Park.....	page 13
Kookabookra.....	page 9
Lagoona.....	page 33
Maleer.....	page 30
Minyon.....	page 20
Moyle Park.....	page 15
Omega 3.....	page 6
Red Cactus.....	page 40
Redward.....	page 2
Ruralco Insurance.....	page 36
Sophonites.....	page 9
Stormley.....	page 25
Turanga.....	page 18
Tanamerah.....	page 13
Wilanstie.....	page 32
Wilson's.....	page 7
Yongerellen.....	page 5

# RED cactus

## BREEDING QUALITY CATTLE



**RED CACTUS JOBE**  
Senior & Grand Champion Bull  
Sydney Royal Feature Show 2015



**RED CACTUS JOE**  
Junior & Grand Champion Bull  
Melbourne Royal 2015

**RED POLL**

**BEEF CATTLE**

**RED CACTUS** | ROSS DRAPER 0428 510 252

redcactus@bigpond.com | [www.redcactusredpoll.com](http://www.redcactusredpoll.com)