

RED POLL ANNUAL 2019



Photo supplied courtesy of Emily H Photography

www.redpoll.org.au
www.facebook.com/Australianredpolls

RED POLL

BEEF CATTLE



CONTENTS

- | | | | |
|----|---|--------------------------|--|
| 2 | Presidents Report | 18 | Western Australian Report |
| 3 | Executive Officer's Report | 20 | Victoria Report |
| 4 | What's on in 2019 | 22 | South Australia Report |
| 5 | Royal Melbourne Red Poll Feature Show 2018 | 22 | Royal Adelaide Led Steer Competition |
| 6 | 2018 Royal Melbourne Show Red Poll Feature | 23 | Red Poll Stud dominates in its last hurrah |
| 8 | How Much Data Do Red Poll Breeders Record? | 24 | New South Wales Report |
| 10 | Northern NSW/Queensland Report | 25 | 2018 National AGM and Stud Tour
New South Wales |
| 11 | Winner of the Red Poll Parker Performance Award | 27 | Herd Fertility |
| 12 | National Youth Camp | 29 | Membership Directory |
| 14 | Show Champions | Inside Back Cover | Advertising Index |
| 17 | Long, Fruitful Career Showing Stud Cattle | | |

Front cover Image: Judging at 2018 Feature, Royal Melbourne Show.

Red Poll Annual 2019 is the official publication of: The Australian Red Poll Cattle Breeders Inc.
c/- Australian Business Research Institute (ABRI) University of New England, Armidale NSW 2351

Publisher and compiled by: ABRI with articles provided by ABRI and ARPCB Inc.

Graphic Design: emajine designz Printer: immij

DISCLAIMER: The contents of the 2019 Red Poll Annual are copyright and reproduction without permission of the publisher is forbidden. The views expressed by contributors and claims made by the advertisers are not necessarily endorsed by the editors and the Australian Red Poll Cattle Breeders Inc. Neither the editors nor the Australian Red Poll Cattle Breeders Inc. take any responsibility for the accuracy of the information contained within this magazine nor for the outcome of any action taken by readers or others based on the information contained therein.



Photo supplied courtesy of Emily H Photography

National Executive 2019

PRESIDENT

Gay Ward (Federal)
 PO Box 460
 Altona North VIC 3025
 ☎ 0417 558 508
 ✉ honerv@gmail.com

VICE PRESIDENT

Kate Goulding
 PO Box 3045
 Lismore NSW 2480
 ☎ 02 6663 1206
 ☎ 0428 221 077
 ✉ katgo@mullum.com.au

TREASURER

Peter Wilson (SA)
 PO Box 251
 Minlaton SA 5575
 ☎ 08 8853 4104
 ☎ 0408 534 071
 ✉ pcklwilson@hotmail.com

Nagy Sorial (Federal)
 226 Gurrundah Road
 Baw Baw NSW 2580
 ☎ 02 4822 8402
 ✉ wongajong_farm@bigpond.com

Murray Williams (WA)
 PO Box 100
 Quairading WA 6383
 ☎ 08 9645 5220
 ✉ yongerellen@activ8.net

Ross Draper (VIC)
 75 Running Creek Road
 Arthurs Creek
 VIC 3099
 ☎ 03 9714 8314
 ☎ 0428 510 252
 ✉ redcactus@bigpond.com

Kate Goulding (NNSW/QLD)
 PO Box 3045
 Lismore NSW 2480
 ☎ 02 6663 1206
 ☎ 0428 221 077
 ✉ katgo@mullum.com.au

Alan Couch (NSW)
 23 Adamson Crescent
 Wanniasa ACT 2903
 ☎ 02 6231 5440
 ☎ 0400 187 260
 ✉ alan@couch.net.au

ABRI Contacts

EXECUTIVE OFFICER AND BREEDPLAN PROCESSING OFFICER

Keryn Hutton
 ABRI University of New England
 Armidale NSW 2350
 ☎ 02 6773 3059
 ☎ 02 6772 5376
 ✉ red.poll@abri.une.edu.au

REGISTRAR

Sharon Reynolds
 ☎ 02 6773 2327
 ☎ 02 6772 5376
 ✉ sharon.reynolds@abri.une.edu.au

TECHNICAL OFFICER

Catriona Millen
 ☎ 02 6773 3357
 ✉ catriona@sbts.une.edu.au

PRESIDENTS REPORT

Report by Gay Ward



Hello and welcome to 2019!

With all the advances in technology it seems we are still not able to control the weather, as 2018 has shown in many areas of Australia. We certainly hope these conditions improve dramatically through 2019.

Circumstances changed from our last Annual publication, in that it did not result in being my last term as President. All the ongoing support from our Members is very much appreciated and as always, I will look to do all that I can to promote and enhance our Red Poll Breed.

Our past year has seen a lot of activity and strong representation of Red Polls at Field Days, Beef Australia, many country Agricultural Shows, Carcase Competitions, through local saleyards, our Royal Shows, in particular the outstanding display at the 2018 Royal Melbourne Show where Red Polls were the Feature Breed and also conducted a very successful elite Stud Sale, all of which resulted in a significant achievement for those involved.

I know it has been mentioned before however I would like to acknowledge again the young Red Poll and general cattle enthusiasts that were working hard while still having some great times at Melbourne Royal amongst the cattle lines, in the wash, in the Judging ring and their handlers' classes, it truly was fantastic to see so many young cattle enthusiasts!

Murray Williams of Yongerellen Red Poll Stud in WA achieved a significant milestone in 2018 with 40 years of consecutive showing at Perth Royal. As those of you who participate at Shows would appreciate this is certainly no mean feat. Congratulations Murray and thank you for the ongoing commitment to promote Red Polls.

After 38 years of consecutive showing, Richard and Kay Daley of Moyle Park Red Polls in SA announced at Adelaide Royal they would no longer be competing at Shows. I would like to thank Richard and Kay for their contribution to the promotion of Red Polls in the show ring and their ongoing support of our Breed.

It is great to see our updated Website design is now live, providing a fresh new look.

Our Strategic plan was discussed by your Executive at multiple workshops in 2018, resulting in key elements or outcomes that are being collated to then share with our Membership for feedback. Once we finalise these two steps, we can then begin to roll these out as our key initiatives and path going forward.

The National AGM and herd Tour was held by our NSW Region in 2018. Even though the majority of their Region was (and still are) facing tough conditions, they were still able to conduct a very successful and informative Tour.

The AGM was very constructive and collaborative, with some very good discussions and suggestions put forward by Members. Of particular note was the suggestion for clearer focus for all Members on our Commercial path and attributes we can offer this Industry sector.

Interestingly this had also been a key element of the Strategic Plan when discussed earlier in the year by our Executive group. It's certainly encouraging that we are all on the same page with similar ideals for Red Polls, now we need to bring them together to form a united approach, which achieves higher volume, to therefore allow our Breed to further enhance the Industry.

Although, in the meantime, we should continue to use the promotional tools and options currently available and already being supported by Breeders who are committed to ensuring Red Polls remain a real opportunity within the Industry.

Please save the date for the 2019 National AGM & Tour to be held by NNSW/QLD region potentially in October with details and exact dates to be confirmed.

All the best to everyone for 2019, I continue to look forward to focusing on having Red Polls first and foremost and catching up with everyone as or when an opportunity presents throughout the coming year.

Regards Gay



EXECUTIVE OFFICER'S REPORT

Report by Keryn Hutton



Unfortunately as I write much of the country is still desperately dry. However, despite the tough times Red Poll once again had a very full year in 2018 promoting the breed. The Feature show and sale at the Melbourne Royal, the Annual General Meeting and

Herd tour in NSW and a very successful National Red Poll youth camp run by NNSW/QLD region all well supported by members.

I would like to thank every member who has taken the time to show case the breed to the public and communicate their knowledge and experience to others. The sharing of ideas and support for the breed ensures there is a future.

For many the drought of the last few years has been a huge external factor affecting the viability of many in the stud and wider agricultural industry. Although drought is an inevitable part of rural landscape it can be very tough financially and mentally. I have seen a vast difference in the way different people respond to the drought and in how their businesses have performed.

Red Poll breeders have shown they are a resilient lot and have shown that goals can be achieved as long as there are committed people working on them. To that end I would like to thank the members of the Executive for their efforts on behalf of Red Poll members and the breed. The next big undertaking will involve the strategic plan which will be distributed in 2019 . . . an interesting journey ahead.

All the best for 2019 and let us hope everyone gets their fair share of rain!

The Year letter for 2019 born calves will be 'Q'.

DID YOU KNOW

2018 marks the celebration of 100 years of Red Poll's, registered in the Australian Herdbook, being shown at the Royal Melbourne Show. In 1918 the foundation of the Red Poll cattle Breeders'Association of Australasia was formed and the Australian Herdbook was established.

Even though Red polls had been shown at the Melbourne Royal from 1896, the year 1918 marked the start of showing Red Polls registered in an Australian Herd book.

A Golden Jubilee was celebrated at the Royal Melbourne Show in 1968 with a picture of a rosette from that on the front of this Annual - a great milestone for the breed.

A number of Red Poll Breeders who attended and exhibited at the Golden Jubilee in 1968 were welcomed to our Feature Show and Sale in 2018.

The ARPCBI sincerely thanks them for their ongoing contribution.



WHAT'S ON IN 2019

17-20 JANUARY VIC Stud Beef VIC Cattle Handlers Camp	26 JANUARY TO 3 FEBRUARY VIC/NSW Stock and Land Beef Week Including Eurimbla 30 January	2-6 FEBRUARY SA Beef Week	22-24 FEBRUARY ACT Royal Canberra Show
12-23 APRIL NSW Sydney Royal Easter Show	5-9 MARCH VIC On Farm Challenge	11-14 APRIL VIC Farm World, Lardner Park, Warragul	LATE APRIL NNSW/QLD On Farm Challenge DatesTBC
15-18 JULY SA Junior Heifer Expo Adelaide	10-19 AUGUST QLD Royal Queensland Show	30 AUGUST TO 8 SEPTEMBER SA Royal Adelaide Show	21 SEPTEMBER TO 1 OCTOBER VIC Royal Melbourne Show
28 SEPTEMBER TO 5 OCTOBER WA Perth Royal Show	OCTOBER RED POLL NATIONAL YOUTH CAMP NATIONAL AGM AND HERD TOUR ALL DATES TBC		1-3 OCTOBER ELMORE AND DISTRICT FIELD DAY



SAVE THE DATE OCTOBER 2019
NATIONAL ANNUAL GENERAL MEETING AND STUD TOUR



SOPHRONITES
RED POLLS

For Semen Sales of Our Champion Bulls

Contact Nell and Ian Staff
0411 314 501
ianstaff@techinfo.com.au

ROYAL MELBOURNE RED POLL FEATURE SHOW 2018

Report by Carlie and Jared Mackelmann



We had an opportunity to take part in the Red Poll Feature at Royal Melbourne Show this year. There was a great showing of cattle with over 70 head presented by 14 studs, many from interstate making the trip to Melbourne to support the breed and feature show. It was great to see many enthusiastic young handlers helping prepare animals in the lead up to judging and handling in the show ring.

There was a great line up of quality Red Poll cattle exhibited. Stormley Lara took out Grand Champion Red Poll Female with Grand Champion Bull going to Red Cactus Joe. Red Cactus Joe went on to win Supreme Red Poll Exhibit. The Red Poll sale was a success with the Reserve Junior Champion Bull Stormley Remington selling for the top price of \$6,500. A great representation of Red Polls took part in the beef parade with 30 head being paraded. We had a Red Poll dinner after the parade where many of us were able to catch up and meet other Red Poll breeders.

We had a team of 6 juniors representing the Red Polls in the Waterford Youth Challenge where we had to prepare a heifer for the ring as we were judged on the team work of preparing our animal with limited time and items. It was a great experience and we made it to the top six of all the teams who took part.

It was great to see many Red Polls participate and a great effort by everyone involved at the show, and for the breed.


Photos

Left: Carlie was awarded Best Herdsperson under 25 at the Feature.


Right: Jared Mackelmann and Megan Tung.

GLENWYN RED POLL STUD
C. MACKELMANN
 208 JENKINS ROAD, CONGUPNA VIC 3633
Ph: (03) 5829 9855
 Email: carlie.mackelmann@gmail.com

**BALLA BALLA
 RED POLL STUD**
 PRODUCING QUALITY BREEDING CATTLE & STEERS



BALLA BALLA BELLAMY
 Interbreed Champion Canberra Royal '07



EURIMBLA TOBY
 Junior Champion Bull Sydney '15

JUDY RAND - BALLA BALLA
 1300 Baxter Tooradin Road, Cannons Creek VIC 3977
Phone 0419 337 760 | **Email** judyrand@ozemail.com.au



2018 ROYAL MELBOURNE SHOW RED POLL FEATURE

Our wonderful Red Poll breed was the 2018 Royal Melbourne Show Beef Cattle Feature Breed and what a terrific event it turned out to be.

There were 72 cattle entries from 14 exhibitors coming from three different states.

2018 also marked 100 years of Red Poll showing at Royal Melbourne Show, a Golden Jubilee had been held in 1968 and this year's Organising Committee were grateful for the information provided from Exhibitors at the Golden Jubilee which allowed us to share this significant milestone. It was a pleasure to have a number of these Exhibitors and Breeders in attendance at the 2018 Red Poll Feature.

We also had a large number of juniors helping and parading who were not only from our Red Poll family but other Breeds as well, it was great to see.

Judge for the day was Mr. Peter Cook of Barana Simmentals located in Coolah NSW; Peter has operated the 2,300 acre [940 hectare] cropping and beef cattle enterprise since 1980. Barana Simmental, established in 1980 is well known and respected in the Australian stud beef cattle industry.



Peter has judged extensively throughout Australia, at multiple Royal Shows, major country Agricultural shows and was also a member of the Judging Panel for the Interbreed competition held on the final day of showing.

The Heifer classes were very strong with over 30 heifers being paraded before the Judge with Stormley Renee being sashed the Junior Champion Heifer. Reserve Junior Champion Heifer was awarded to Red Cactus Josephine.

The Senior Champion Female was presented to Stormley Lara with her twin calves at foot, while Reserve Senior Champion female went to Stormley Princess.

Grand Champion Red Poll Female was won by Stormley Lara with the Judge commenting "She is a big, deep barrellled cow, she is a good footed cow and stands nice and square".

The Junior Champion Bull ribbon was placed on Red Rush The Witcher, from Kim Usher Red Rush stud at Armidale in Northern NSW. Reserve Junior Champion Bull was awarded to Stormley Remington.

The Senior Champion Bull was also hotly contested with Red Cactus Joe coming on top to be crowned with the Senior Champion ribbon, while Redward Forest was the Reserve Senior Champion bull.

Grand Champion Red Poll Bull was awarded to Red Cactus Joe.





With a Kubota side by side utility vehicle part of the prize for Supreme Red Poll Exhibit the stakes were very high between the Storm family's Grand Champion Female and Ross Draper's Grand Champion Bull.

Red Cactus Joe got the nod over the cow with the Judge commenting, "He's certainly got some meat and power through him and he stands very square".

Red Cactus Joe had an EMA of 145 cm and weighing in at 1285 kg with fat scans of 13mm and 4mm.

Most Successful Exhibitor went to Stormley Red Poll stud of Barham NSW.

For the first time in a number of years the Red Poll Breed ran a live auction after Judging with ten live lots and two semen packages offered.

The top price was Lot 3 Stormley Remington who earlier in the day was Reserve Junior bull selling for \$6,500 to a commercial Red Poll breeder, Kelleher Pastoral Co, St Arnaud VIC.

Top price female was Lot 6 Stormley Renee the Junior Champion Heifer from the days judging who was purchased for \$5,000 by Balla Balla Red Poll Stud.

After a very eye catching display in the Grand Parade this memorable and successful day for Red Polls concluded with a Breed dinner where all those attending were able to relax and chat about the day's events.



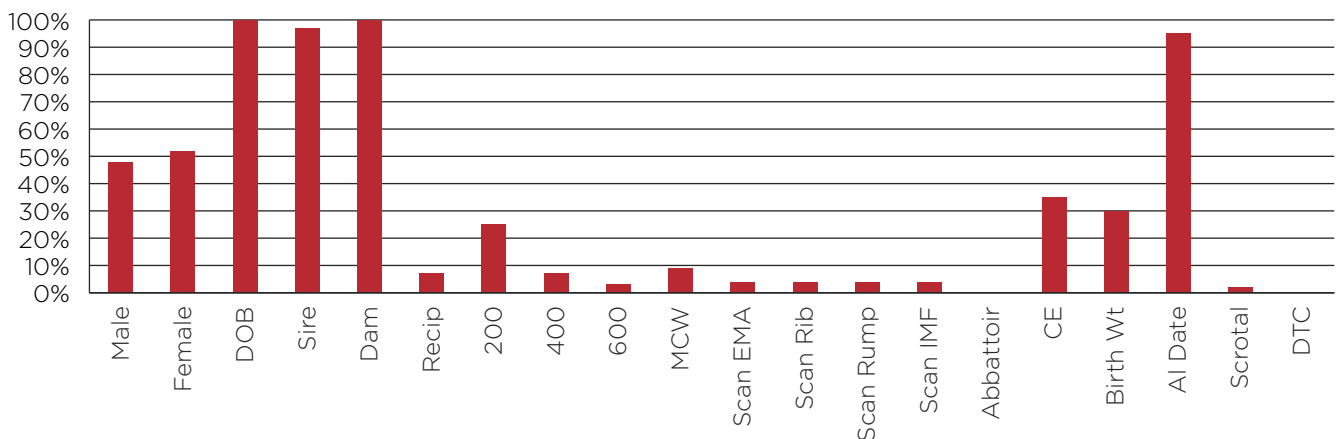
The Organising Committee would sincerely like to thank all Exhibitors, Sponsors, Red Poll supporters and helpers for all playing their part in making this significant event so successful.



HOW MUCH DATA DO RED POLL BREEDERS RECORD?

The collection of performance data underpins the Red Poll BREEDPLAN analysis, allowing for the identification of genetically superior animals for a range of economically important traits. The amount of performance data that is recorded by Red Poll breeders varies by trait. In addition, the amount of data recorded for some traits (e.g. ultrasound scan data, calving difficulty scores and birth weights) has increased, but remained steady for others (e.g. 200, 400 and 600 day weights and scrotal measurements). A range of strategies may help to improve the amount of performance data that Red Poll breeders collect.

ALL SEXES



The percentage of registered Red Poll calves born in the 2012 to 2016 calving drops that have performance data on file for a range of traits.

Strategies to increase the amount of performance data

There are a number of strategies that Red Poll breeders can consider to increase the amount of performance data that they collect. A number of these are outlined below:

- > Record birth weights and/or calving difficulty scores for all calves and submit at the time of calf registration. These traits should also be recorded for stillborn or dead calves.
- > Ensure that all AI calves have an AI date supplied at the time of calf registration.
- > Consider taking an early weight. 200, 400 and 600 day weights can be recorded when the calf is aged between 80-300, 301-500 and 501-900 days of age respectively. For example, if you normally sell most of your calves as yearlings, consider taking an early 400 day weight for all calves when they are around 350 days of age.
- > You can weigh pregnant heifers - if taking a 600 day weight on pregnant heifers, try and take the weight before they are more than 3 to 4 months pregnant. If they are more than 4 months pregnant, you should put those that have scanned empty into a separate management group from those that are PTIC. Furthermore, those that are PTIC should be at a similar stage of pregnancy.
- > When you take 200 day weights on the calves, run the cows over the scales as well - this is your mature cow weight.
- > Consider scanning heifers as well as your bulls.
- > Take scrotal circumference measurements on all young bulls when recording their 400 day weights. This will mean you collect data for any bull that has been sold by the time you record 600 day weights.
- > Consider recording days to calving data.

For further information, contact Catriona Millen, SBTS Technical Officer for Red Poll, on (02) 6773 3357 or via email catriona@sbts.une.edu.au.

Southern Beef Technology Services (SBTS)

Southern Beef Technology Services (SBTS) is an extension service with the objective of maximising the understanding and use of genetic technologies in the Southern Australian Beef industry. SBTS is a joint initiative of Meat and Livestock Australia (MLA), ABRI and a number of Breed Societies that run the majority of their cattle in Southern Australia. This includes the Australian Red Poll Cattle Breeders Inc.

Services provided by SBTS include:

- > **Technical Support:** Technical officers are available via phone or email to provide technical support for BREEDPLAN and related genetic technologies.
- > **Herd Visits:** Herd visits include discussion about the level of performance recording and the drivers of genetic progress in the herd. As part of the herd visit, SBTS produces Completeness of Performance and Genetic Progress reports for the herd, the latter of which is only available in a herd visit.
- > **Workshops and Field days:** SBTS regularly attends and presents at workshops and field days. Workshops organised by SBTS include BullSELECT, which is designed to assist commercial bull buyers with their purchasing decisions.
- > **Technical Documents and Tip Sheets:** Maintenance and distribution of BREEDPLAN tip sheets and other technical documentation.

For more information or to contact SBTS, please visit the SBTS website <http://sbts.une.edu.au>



Peppervale

RED POLL BEEF CATTLE STUD

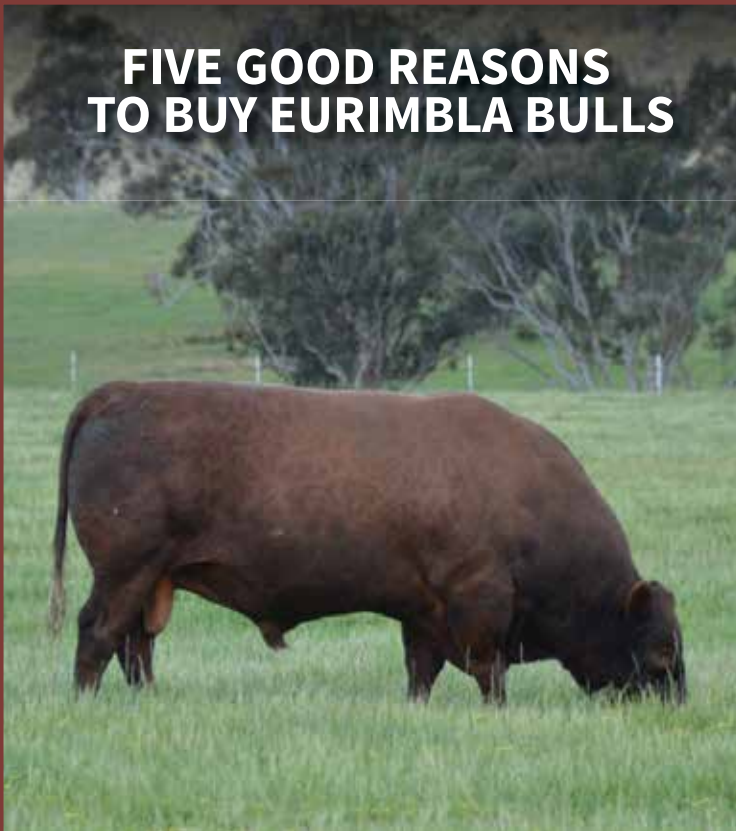
**O & A REINHARDT
BRAIDWOOD NSW
PH 0411 253 933**

Bulls and females available in 2019

Sale animals bred from the bulls:

Derrileen Northern Rambler
Wilanstie Friar Lawrence
'The General' Peppervale
Clausewitz Rambler

FIVE GOOD REASONS TO BUY EURIMBLA BULLS



EURIMBLA

1. Eurimbla sources genetics from around the world to breed Red Poll bulls with the most diverse Red Poll genetics in Australia. Eurimbla is a one stop bull shop that has a broad selection of bulls to choose from.
2. Bulls are naturally grass fed. What you see is what you get.
3. Eurimbla bulls are structurally and fertility guaranteed. This year, 15 year old Eurimbla Lepidus was in our joining program.
4. Eurimbla bulls are performance tested for growth, fat cover and marbling.
5. Eurimbla bulls have bred many show champions and consistently win the Victorian On-farm Challenge.

Ian Coghlan 0412 650 050 Jill Coghlan 0488 661 585

www.facebook.com/redpollsandshorthorns

NORTHERN NSW/QUEENSLAND REPORT

Report by Tim Light (NSW/QLD President)

As my term of the NSW/QLD Regional President comes to an end I look back on the past 12 months and think what an enthusiastic year we have had and come through.

This year we welcomed Kate Goulding back to our working committee as our regional delegate to the National Executive which gave our region a voice. Thank you, Kate, for taking on this big role.

Our first event for my term was the running of the National Red Poll Youth camp where I'm proud to say we did a top job for the future of our breed. Thank you to all for your enormous effort in running and mentoring the next generation of Red Poll Cattle breeders that come through this program.

The next event was the Manilla Regional feature show which was very hot. This was greatly attended by more than 20 head exhibited just two days out from Sydney Royal show. Thank you for your efforts in attending.

Four studs represented NNSW/QLD at Sydney Royal Show and performed very well. Congratulations to Lilleah Newberry (junior member) on doing so well in the fitting challenge.

Coming into a dry tough winter three studs pulled together to fulfill our Farm Fest Trade site. The expertise of Albert and Dorothy Hancock with Steve William's assistance resulted in some successful sales of quality Red Poll cattle proving each year how worthwhile this display is to both stud and cross breeding operations. Overall, attendance was down but there was very good interest in the Red Poll site. Thank you, Albert, Dorothy and Steve, for lending your time.

The Brisbane EKKA soon came around for 2018. Judge Warren Miller and associate judge Jessie McClenaghan (a junior member) cast their eyes over the eight-head exhibited from three studs. Thank you for making an effort in dry times to display your cattle.

All in all, a very proactive year with great achievements for the breed had by all. To those making the big trip to the Australian Red Poll Feature Show at the Melbourne Royal 2018, I wish you all the best of luck both in the show and the sale ring.

I would like to thank all the NSW/QLD region members for supporting me in my 12 months. Thank you to Rachel Hancock for the big effort you put into running the region and your extra time with the Youth camp.

To the new incoming committee, I wish you well and look forward to working with you in 2019 with major events coming up such as NRPYC, Farm Fest, Ekka and National Red Poll AGM stud tour 2019.

Thank you and all the best.



Photo: Cody Storm and Lilleah Newbury at Sydney Royal Show 2018.



Home of the Red Poll
Red Polls grown at the top of the range
Enquiries Welcome

Contact: Albert or Rachael Hancock
"Yarraldool" Pinkett Road, Glen Innes NSW 2370
Phone: 02 6733 4666

**LAGOONA
RED POLL STUD**
Breeding the Champions



Contact: Tim Light
0458 744 552
or 02 6775 1129
Armidale NSW

**LAGOONA
RED POLL STUD**

WINNER OF THE RED POLL PARKER PERFORMANCE AWARD

Well done to the Light Family's Lagoon Red Poll stud - winners of the Red Poll Parker Performance Award!!

Tim and Briony, Ellen, Vicki and Richard have worked hard exhibiting around the shows to gain this award.

Richard and Vicki received the Award at the Region's Christmas party. Congratulations!

The award is presented annually at the Red Poll AGM to the most successful exhibitor within set classes and the championships at a nominated Royal Show. Due to timing it is always the results of the year preceding the AGM.



Photo: Richard and Vicki Light, courtesy Kate Goulding.



Lagoona Pertunia



Lagoona Ore



RED RUSH RED POLLS

RED POLLS NEWEST STUD

KIM AND NATHAN USHER

62 Mundays Lane
Saumarez Ponds NSW 2350

Phone 02 6775 1069 0408 073 427

Email kim.usher@une.edu.au

Red Rush the Witcher winning Junior Champion - Royal Melbourne Red Poll Feature.

NATIONAL YOUTH CAMP

Report by Lilleah Newberry



On the 12th, 13th and 14th of October the Red Poll youth committee held another great camp at the Glen Innes showgrounds.

When we all arrived on Friday morning it was great to see many new faces and to catch up with mates from previous camps.

The camp kicked off with a welcome and introduction to the camp where we were provided with a water bucket, brush, competition shirt, hat and an information booklet and the Red Poll annual book. Followed by a great morning tea, which then led to the allocation of cattle. Each person was allocated either a heifer, steer or bull which would become their responsibility for the rest of the weekend.

After lunch the camp took a bus tour to Ranger's Valley feedlot. This was very interesting as we were shown the cattle in each pen and were also shown the feed that goes into the cattle. Alex Smith gave us a great talk about the feedlot while we did the tour. Once we had returned to the showground we had the opportunity to practise with our cattle. After we had fed up the night was lit up with the annual extravaganza for our own entertainment for the night.

The next day kicked off with rotations this included making halters with Albert Hancock, clipping with Briony Looker, careers/MLH talk with Michael Crowley and a talk and demonstration on parading with Jane Leak. In the afternoon we had a good time with the heifer fitting challenge. This challenge was to have a dirty animal and get it ready and into a show ring in a limited amount of time. This was a great way to wrap up day two and ready for day three.





The last day was the competition day it kicked off with junior judging and parades once this was completed we had a presentation to finish the camp were all the winners got trophy's and great awards. I would like to take this opportunity to thank everybody that made this camp possible, to the kitchen ladies for making delicious meals. I am very excited to be the 2018 red poll junior ambassador.

Photos

Top left: 2018 National Youth Camp.

Top middle: Red Poll Member award winner Lilleah Newberry with Kim Usher - Sponsor and Justin Matthews - Herdsman and member award Judge.

Top right: Paris Whibley Champion herdsman and Justin Matthews Judge.

Left bottom: Jaxon Taber Grand Champion parader with Judge Jesse Joseph.

MINYON RED POLLS



3395 Casino-Coraki Road
Tatham NSW 2471

Dean 0488 536 923
Kate 0428 221 077

OMEGA 3 GINO

at 22 months

Performance: 886 kgs

• 12/12 fat, ema 125, SS 42cm.



Nick & Prue Lee: 0429990388
www.omegaredpolls.com.au
51 Claremont Rd
QUIRINDI. N.S.W. 2343.

PRISCILLA HANCOCK "WELLROCK"
110 BLACKS ROAD GLEN INNES N.S.W
PH. 02 6732 5038

2018 BRISBANE ROYAL COMPETITION WINNERS

*Judged by
Mr Warren Miller
Holbrook NSW*



Photo: Lisa Hedges, Elders, Tim Light and Micheal Crowley with the Senior and Grand Champion Red Poll Bull, Lagoona Oreo, Lagoona Red Poll Stud. Photo courtesy, QLD Country Life.

JUNIOR CHAMPION FEMALE	Lagoona Stud - Lagoona Pertunia
RESERVE JUNIOR CHAMPION FEMALE	K & N Usher - Stormley Rhianna
SENIOR CHAMPION FEMALE	Lagoona Stud - Lagoona Nichola
RESERVE SENIOR CHAMPION FEMALE	AJ & RM Hancock - Kookabookra Surprise
GRAND CHAMPION FEMALE	Lagoona Red Poll - Lagoona Pertunia
SENIOR CHAMPION BULL	Lagoona Stud - Lagoona Oreo
GRAND CHAMPION BULL	Lagoona Stud - Lagoona Oreo
BREEDERS GROUP	RA, VA, TD & EL Light - Lagoona Red Poll Stud

2018 MELBOURNE ROYAL COMPETITION WINNERS

*Judged by
Peter Cook
Barana Simmentals
Coolah NSW*



Photo: Grand Champion bull and Supreme exhibit, Red Cactus Joe with exhibitor Ross Draper, Chris Hillman - International Animal Health and judge Peter Cook.

JUNIOR CHAMPION FEMALE	S Storm & Sons - Stormley Renee
RESERVE JUNIOR CHAMPION FEMALE	R Draper - Red Cactus Josephine
SENIOR CHAMPION FEMALE	S Storm & Sons - Stormley Lara
RESERVE SENIOR CHAMPION FEMALE	S Storm & Sons - Stormley Princess
GRAND CHAMPION FEMALE	S Storm & Sons - Stormley Lara
JUNIOR CHAMPION BULL	K & N Usher - Red Rush The Witcher
RESERVE JUNIOR CHAMPION BULL	S Storm & Sons - Stormley Remington
SENIOR CHAMPION BULL	R Draper - Red Cactus Joe
RESERVE SENIOR CHAMPION BULL	G Ward - Redward Forest
GRAND CHAMPION BULL	R Draper - Red Cactus Joe
SUPREME EXHIBIT	R Draper - Red Cactus Joe
MOST SUCCESSFUL EXHIBITER	S Storm & Sons

2018 ADELAIDE ROYAL COMPETITION WINNERS

*Judged by
Matt Kirk
Mundubbera Qld*



Photo: Senior and Grand Champion bull Moyle Park Pengelly.

JUNIOR CHAMPION FEMALE	RW & KL Daley - Moyle Park Leofa
GRAND CHAMPION FEMALE	RW & KL Daley - Moyle Park Leofa
JUNIOR CHAMPION BULL	RW & KL Daley - Moyle Park Bob
SENIOR CHAMPION RED POLL BULL	RW & KL Daley - Moyle Park Pengelley
GRAND CHAMPION BULL	RW & KL Daley - Moyle Park Pengelley
MOST SUCCESSFUL EXHIBITOR	RW & KL Daley - Moyle Park Stud

2018 SYDNEY ROYAL COMPETITION WINNERS

*Judged by
Mr Andrew Green
Kyneton VIC*



Photo: Judge Andrew Green, Alex Cowlshaw presenting the Cowlshaw Trophy, handler Lacey Kelleher and owner Trent Storm with Shannon Lawlor of International Animal Health.

JUNIOR CHAMPION FEMALE	S Storm & Sons - Stormley Ruby
RESERVE JUNIOR CHAMPION FEMALE	S Storm & Sons - Stormley Renee
SENIOR CHAMPION FEMALE	N & P Lee - Omega 3 Gabriel
RESERVE SENIOR CHAMPION FEMALE	S Storm & Sons - Stormley Paris
GRAND CHAMPION FEMALE	S Storm & Sons - Stormley Ruby
JUNIOR CHAMPION BULL	G Ward - Redward Barnaby
RESERVE JUNIOR CHAMPION BULL	R Wilkinson - Baladeen Monty
SENIOR CHAMPION BULL	RA, VA, TD & EL Light - Lagoon Oreo
RESERVE SENIOR CHAMPION BULL	G Ward - Redwood Forest
GRAND CHAMPION BULL	RA, VA, TD & EL Light - Lagoon Oreo
BEST EXHIBIT	S Storm & Sons - Stormley Ruby
THE BRIGADIER G S HURST PERPETUAL PRIZE FOR GRAND CHAMPION BULL	Lagoon Oreo
THE W K COWLISHAW PERPETUAL TROPHY FOR THE BEST RED POLL EXHIBIT	Stormley Ruby

2018 PERTH ROYAL COMPETITION WINNERS

*Judged by
Doug Giles
Newdegate WA*



Photo: Senior and Grand Champion Bull, Moyle Park Pemberton. Photo courtesy: Kane Chatfield Farm Weekly.

JUNIOR CHAMPION FEMALE	E & J Ghiladucci - Karradace Misty
RESERVE JUNIOR CHAMPION FEMALE	Q & S Hooper - Red Sands Wattle
SENIOR CHAMPION FEMALE	JH Williams & Co - Yongerellen Esme Penny
RESERVE SENIOR CHAMPION FEMALE	E & J Ghiladucci - Karradace Scarlett
GRAND CHAMPION FEMALE	JH Williams & Co - Yongerellen Gracious Kin
JUNIOR CHAMPION BULL	Q & S Hooper - Red Sands Wonderworld
RESERVE JUNIOR CHAMPION BULL	JH Williams & Co - Yongerellen Neville Quellington
SENIOR CHAMPION BULL	JH Williams & Co - Moyle Park Pemberton
GRAND CHAMPION BULL	JH Williams & Co - Moyle Park Pemberton
SUPREME EXHIBIT	JH Williams & Co - Yongerellen Esme Penny
MOST SUCCESSFUL EXHIBITOR	JH Williams & Co

Yongerellen 
Home of the Grey Kangaroo

Yongerellen Esma Penny

*Senior and Grand Champion Female and
Supreme Red Poll 2018 - Perth Royal Show*



Photo by Kane Chatfield Farm Weekly

TOP QUALITY CATTLE FOR SALE

2 BULLS - MUCHEA LIVESTOCK CENTRE 19TH FEB 2019

Enquire about females and lookout for the adverts

CONTACT MURRAY
(08) 9645 5220 0429 455 220
yongerellen@activ8.net.au

LONG, FRUITFUL CAREER SHOWING STUD CATTLE

Showing stud cattle at the IGA Perth Royal Show requires much dedication and Yongerellen Red Poll stud principal Murray Williams can attest to that after his 40th consecutive show appearance.

The 70-year-old, who farms at Quairading, said he was so nervous ahead of his first show that he couldn't sleep. *Bob Garnant - Countryman 16 October 2018*

Encouraged by the wish to have good numbers at Perth Royal in 1979 to celebrate the visit of international Red Poll breeders attending the 2nd World Red Poll Congress, Murray took up the challenge and exhibited seven head at his first royal show. That started an unbroken annual event which in 2018 reached forty years.

Murray recounts that in that year there was about 80 head of Red Poll exhibited from three states. A young bull from Mal Quatermass', Conmurra Stud in Tasmania, Conmurra Tall Timber, won the junior and grand champion award and was sold and exported to South Africa.

Yongerellen won two of the junior female classes and took out junior and reserve junior champion female awards. The junior champion, Yongerellen Golden Dee, returned to Perth two years later to win grand champion Red Poll female and supreme champion all breeds beef female. Reserve champion, a purchased heifer, Koolunga Kathy, won a class of eighteen head which, incidentally we bookended. It was a thrill to take a great, great, great grandson into the ring in this 40th year.

Murray has commented that there have been many changes over the years, but probably not as many as there could have been, for the section has essentially been held stagnant by influential breeders who would not embrace change. As a result breeding animal numbers at the show are less than half what they were in 1979 and trade cattle numbers less than one third. Trade cattle are still sold live with little relation to

carcase merit. In 2018 the grand champion carcase was purchased for the miserly sum of \$1,300 as a live steer, having not been placed in the 'On Hoof' classes.

In the first two years of showing there were no interbreed competitions and when they did start they were judged by one or two selected judges, unlike the present composite system. Breed judging was held across multiple rings over one or two days but is now over five days in the one judging ring.

The show no longer has commercial attraction unlike the early days when people went to shows to purchase animals and a ribbon had commercial value.

However, on a very positive note Murray maintains that the exchange of industry knowledge that occurs between judges, around the ring, and in the lanes has never been given due recognition of its value... in itself it is of sufficient value to participate in the show.

Some interesting statistics have been developed around the forty years. At ten days per show Murray has spent thirteen months of his life on the Claremont Showground with an average of eight animals per year over 300 head has been exhibited.

At the current commercial rate to feed, train, enter, transport, prepare and exhibit an animal at a cost of over \$3,000 per head. The financial contribution is significant. Do the maths!



"My message is never stop seeking cattle knowledge, particularly understanding the importance of the bovine female characteristics, and through education and sharing, anyone can have a long and fruitful career breeding and showing these delightful creatures."

Murray Williams

WESTERN AUSTRALIAN REPORT

Report by Murray Williams



Photo supplied courtesy of Emily H Photography



We are pleased to report that for much of the agricultural areas the season has been average to good. There are some areas along the south coast that suffered severe winds early in the season and did not properly recover, and some parts of the south west down on average rainfall.

Grain prices have been at good levels creating a rare combination of good yields and good prices for many people. Both sheep and wool prices have been good with some wool very high. Cattle are back from their peak but remain in the profitable range. Pig and poultry industries that rely on purchased grain have suffered from the price inflation created due to the drought in Eastern States, and pigs have also suffered from over supply with too much imported pork. The dairy industry in the state continues to struggle.

It is pleasing to report that the only Red Poll bull entered in the Narrogin invitation sale, the outstanding Red Sands Unison, sold at auction for \$6,000 and other bulls and females again sold interstate.

During and after judging with the next gen



Photos: Left: Karradace - Ghilarducci Family

Right: Red Sands Shezanne and Paul.

Bottom: WA's newest Young Member and their Oldest Member competing in the ring.

It was disappointing to have Wayne and Belinda Owston wind up their Red Poll Stud herd. Our best wishes go with them as they consolidate family and other interests and we look forward to continued fellowship at shows.

WA Red Polls were again represented in the cattle section at Wagin Woolorama, Sydney Royal Easter Show and Perth Royal Show.

For Murray Williams and the Yongerellen Stud it was the 40th consecutive year of showing of Red Polls at the Perth Royal. The occasion was celebrated in the Red Poll lanes after judging and given due acknowledgement by the Royal Agricultural Society. Interviews with Murray and pictures of Red Polls appeared in the Daily paper, television news and The Rural Press as well as ABC radio.

Murray and Jill joined sponsors and other guests for their long term recognised contribution to the show at a dinner hosted by RAS of WA President Paul Carter.

The menu featured dishes of Western Australian produce in some unique combinations. Murray described the fillet steak as the best he has had since a serving at Dreisbach's restaurant in Nebraska, USA in 1975.

In July the region said farewell to Yongerellens Mrs Phyllis Williams who passed away on 30 June aged 96 years.



Photos: Top: Karradace Scarlett

Bottom: Karradace Misty





Breeding for Excellence

GREG ABBOTT
287 Kolora Lane, Kolora VIC 3265
phone 03 5592 7224 mob 0438 922 313
email gk.abbott@bigpond.com



Turanga

RED POLL STUD Est. 1985

WOODBURN RED POLLS



D.N. PAYNE - WOODBURN
Kilmore VIC 3764 | Phone 03 5782 1002
Email dnpayne@bigpond.net.au

**THANK
YOU**

Special mention of thanks to Emily Trainor for all her help and expertise preparing and parading Red Polls at Perth Royal.

VICTORIA REPORT

Report by Trent Storm - President



The past 12 months have been very full on with the breed attending numerous field days, two feature shows plus our On Farm Challenge. Our season has been very challenging and dry with no were near enough rain, and when it did rain it was at the wrong time or no follow up rain occurred. This has then pushed up water irrigation prices in those areas, adding to already high hay and grain prices. On the plus side there have been a lot of failed grain crops that have still made quality hay which should be coming onto the market very soon.

The Vic Region was privileged to hold the 2017 AGM and Tour in Ballarat. Thanks must go to Don Castle, Greg Abbott, Sam Henson, Douglas Payne, Ross Draper, Gay Ward and the Johnson family for allowing all of us the chance to look through your herds and treating us to that great Red Poll hospitality that we all love.

The 2017 Noorat show held in November was a Red Poll Feature. This event had tremendous support from the Victorian region and was a huge success for the breed with well over 50 head of Red Poll cattle shown. Well done to the Red Cactus Stud for winning Senior Interbred Bull of the show with Red Cactus Joe and the Stormley stud for winning Supreme Beef Exhibit of the show with Stormley Princess and her calf Stormley Ruby.

We once again had a site at the 2018 Lardner Park field days in which we had many great visitors and multiple sales over the course of the field days. Thanks going to Frank and Anne Moya, Ian and Neil Staff and Doug D'Oliveira for manning and setting up the site and also to Ross Draper for supplying the cattle.

Three Victorian Region members made the long haul to the 2018 Sydney Royal Show. Congratulations to the Storm family for winning Supreme Exhibit with their heifer Stormley Ruby.

We held our AGM meeting in July this year with all positions being filled, Trent Storm being elected President, Ross Draper Vice President and Secretary/Treasurer being Ian Staff.

Our major event this past year was the 2018 Red Poll Feature Show and Sale at the Royal Melbourne Show. There were 72 cattle entries from 14 exhibitors that were made up from three different states. Our judge was Peter Cook of Barana Simmentals from Coolah in NSW.

This was a marvelous event that truly showcased what our breed has to offer to the beef industry in general. We had lots of great feedback from various other exhibitors and RASV official's about how well the breed was presented and the manner of all Red Poll breeders that attended.

The Grand Champion Female award went to Stormley Lara, with the Grand Champion Bull going to Red Cactus Joe who then went on to be Supreme Red Poll Exhibit.

The Red Poll breed also ran a live auction after Judging with 10 live lots and 2 semen packages offered. The top price was Lot 3 Stormley Remington who earlier in the day was Reserve Junior bull selling for \$6,500 to a commercial Red Poll breeder.

Ahead in early 2019 we have our On Farm Challenge confirmed for the 5 - 9 March, entry information will be distributed soon and we anticipate great entries again this year.

Our Site at Lardner Field Days from 11 - 14 April is also confirmed where we look forward to showcasing Red Polls to the wider Industry and engaging with attendees to provide information on the Breed's key attributes.

The Vic Region will again be represented at this year's Sydney Royal, on grounds from 10 - 16 April.

I would personally like to thank all members for their ongoing support and helping hand for me in my first year as the Victorian President.

Photos

Top left: Anne Moya with Local MP Melinda Bath who visited the Red Poll site at Lardner Park Field Days.

Top right: Eurimbla Boomer.



RESULTS

VICTORIA ON FARM CHALLENGE RESULTS

- > Senior and Grand Champion bull and top scoring exhibit awarded to I and J Coghlan.
- > Senior and Grand champion female awarded to G Abbott and Family.
- > Junior Champion female awarded to S Storm and Sons.

Stormley Red Polls



2018 Royal Melbourne Show

Red Poll Feature

- Junior Champion Heifer
- Senior Champion Cow
- Reserve Senior Champion Cow
- Grand Champion Cow
- Reserve Junior Champion Bull
- Best Group of Three
- Best Two Heifers
- Most Successful Red Poll Exhibitor

Top Priced Bull and Female in Red Poll Feature Sale

S.Storm & Sons

Phone: 035453 2140 Mobile: 0428 262 991

Email: stormley@dragnet.com.au

SOUTH AUSTRALIA REPORT

Report by Peter Wilson

This year's report will be somewhat brief as it has been a relatively quiet 12 months for Red Polls in SA. We are constrained by our financial situation and small number of members but will continue to push forward and promote the breed to the best of our ability.

Seasonal conditions in SA are like most parts of Australia, very mixed! The southern regions had a good hay season and harvest reports are good with consistent yields, combined with high grain prices. Other parts are now drought declared. Here's hoping those who need the rain get plenty, and soon!

The 2018 Adelaide Royal saw good steer results, we came 3rd from 12 breeds, in the Thomas Foods team trophy. All 3 selected steers scored over 80 points. With the Virangra herd dispersal, it's up to the remaining breeders to step up and regain those top individual carcass results.

Moyle Park again represented the breed during SA Beef Week in February, Richard Daley also provided heifers and organised handlers for this year's Junior Heifer Expo. Thank you to Richard and his team.



Oakwood and Moyle Park studs represented South Australia at the Melbourne feature show in September. This was a great event and spectacular public promotion for the breed.

Photo: Grand Champion Bull: Cassie Hughes, Moyle Park stud, Jamestown and Judge Matt Kirk, Mundubbera, Qld.

ROYAL ADELAIDE LED STEER COMPETITION

Congratulations to Burra Community School who exhibited the Red Poll steer from Virangra Red Poll Stud.

Virangra Rustys' carcass was the highest scoring Red Poll winning the Trevilla trophy. It came 3rd out of 46 entries in the heavy domestic class with an EMA of 104 sq. cm and total points of 87.78.

Congratulations Burra Community School and Kev Graham, Virangra Red Poll Stud.



MALEER RED POLLS

Maleer Partners - Jamestown SA



QUALITY CATTLE BRED WITH CARE FOR OVER 50 YEARS

Functioning cattle bred under paddock conditions for stud and commercial use. Bulls and females available, your inspection invited.

For all enquiries Chris and Danielle Malone
Email maleer4@bigpond.com
Ph (08) 8665 4037 Mobile 0418 807 414

RED POLL STUD DOMINATES IN ITS LAST HURRAH

By Vanessa Binks - Royal Adelaide Show News

Jamestown's Moyle Park stud walked the cattle ring for the last time at the Royal Adelaide Show this year and to help the stud finish on a high note, it had a clean sweep of the champion ribbons under Judge Matt Kirk, Carinya Brahman stud, Mundubbera Qld.

The grand champion bull title was sashed to senior champion Moyle Park Pengelley, exhibited by Cassie Hughes, Moyle Park stud, Jamestown.

Sired by Moyle Park Pontiac and out of Moyle Park Ballina, the 736kg bull had an 118 sq cm eye muscle area, with fat depth scans of five mm rib and 4mm rump.

Moyle Park stud principal Richard Daley said he the grand champ had plenty of muscle.

"He is so structurally correct and its sire was a bull that has proven himself in our stud for a really long time," he said.

"Although this will be our last year for showing, we have had a good run and this year was a good achievement."

Mr Kirk said the grand champion was an outstanding bull and well deserving of the title.



The junior champion bull sash was won by Moyle Park Bob, Moyle Park stud. Moyle Park Bob was sired by Oakwood Bovine Builder and out of Moyle Park Wain two.

The grand champion female title was won by junior champion cow or heifer Moyle Park Leofa. It was sired by Oakwood Bovine Builder and came up through the cow or heifer, ten months and under 18 months class.

Photo: Richard Daley and Moyle Park Lachlan.

WILSON'S RED POLL CATTLE



**OAKWOOD RED POLLS, THE HOME OF FERTILE PRODUCTIVE CATTLE FOR OVER 60 YEARS
INQUIRIES AND VISITORS ALWAYS WELCOME**



Alan and Marilyn Wilson
Brentwood via Minlaton SA 5575
Email wilsonbeef@hotmail.com Ph 0428 434 534

Peter and Kristen Wilson
PO Box 251 Minlaton SA 5575
Email pcklwilson@hotmail.com Ph 0408 534 071





NEW SOUTH WALES REPORT

Report by Jill Coghlan - President NSW Region

As at the end of the 2017 financial year, the NSW region welcomed four new members comprising two full, one commercial and one junior member. However, I suspect our membership will decline this financial year. Causes of this will be retirement, drought and other reasons.

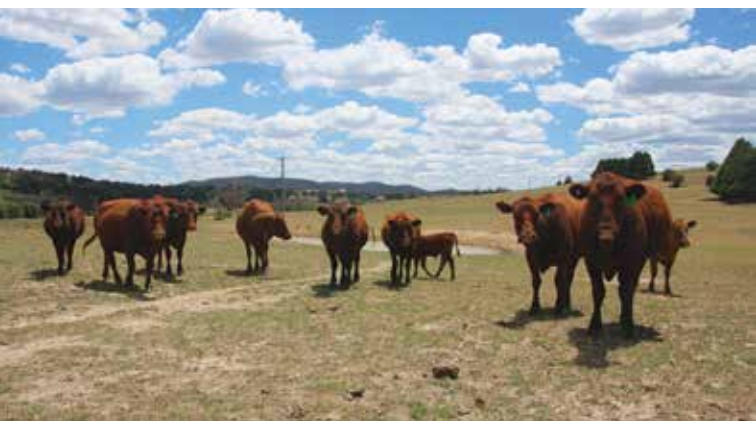
Two years ago, our members made several recommendations to National Executive, all of which are being addressed. These included a Marketing Plan, new website and an intermediary fee for Junior membership up to Full membership. Another recommendation from our members was for new promotional material. Our Branch achieved this earlier this year with some fantastic brochures, banner, crossbreeding flyers, pens and postcards. I especially acknowledge and thank Margaret Sorial who was responsible for most, or all of these initiatives. Our region also thanks National Executive for following through on these projects however, we recognise that National Executive declined an intermediary fee for Junior membership.

Sydney Show was a great success with Red Poll exhibits from every Region in Australia. Red Poll steers again proved their worth in the carcass competition where from 11 Red Poll steers exhibited, 8 steers received awards with the breed's average point score being 82.8. We also hosted a very popular gathering in the cattle shed after judging that provided an occasion for exhibitors and friends to catch up.

Please be advised that a new class has been introduced at this years' Sydney Show that's 9-12 month female class. Our region requested this as it considered the Red Poll breed needed an extra female class.

At our last AGM in July, Alan Couch gave an excellent presentation about the importance of pure bred cattle in the beef industry. We'll hope to continue having a guest presenter at all our face to face meetings on topics relevant to our members. Another practice we've just started in our meetings is to allow a couple of minutes for us each to say anything we'd like. This will be very worthwhile in knowing if there's anything we or our region can be doing to improve things or just giving our members the opportunity to share what they've been up to with like minded people. It'll also probably identify future presenters.

A project our Branch did this year on our Facebook page was to ask our members to recommend a top Red Poll agent. We did this to start a discussion about what agents like about Red Polls and what we can do to encourage agents to be more supportive for our breeders. One clear answer was to give them good information so they can more easily recommend Red Polls to commercial buyers. We had two top agents; Dhugald McDowall ECM Livestock, who acts for Belault Red Poll stud and Peter Wallis a sub agent for Elders who acts for Eurimbla Red Poll stud. Dhugald McDowall





has established a niche market for prime Belault vealers to a shop front abattoir nearby on the coast. Dhugald has established a further market for any surplus Belault cattle with select buyers from the Mittagong area.

Peter Wallis has provided a service to Eurimbla that is indispensable. Peter has found new commercial buyers for Eurimbla bulls and his help and support with our cattle management has been fantastic. The NSW region hopes to continue this discussion more broadly with other agents in an effort to stimulate and grow a more demanding commercial market for our members, especially for bulls.

Garrick Mulcahy and his team of students from Prairiewood High achieved a great outcome at Sydney Show and along with other High schools, show Red Polls at many local shows. This year Bellingen High utilised our Branch offer of free semen to source semen from eight different bulls for their Breedplan program. With the support of Mike and June Bassula, Tumbarumba Highschool students exhibited for the first time at the Red Poll Feature show at Melbourne Royal. Hopefully this kind of exposure to our breed will be lifelong for some students. We will continue to provide support and encouragement to these schools in any way we can.

Margaret Sorial has handed over the Administration of our Facebook page to Teash Salzke. Margaret did a fantastic job setting up this page and Teash is doing a fantastic job as our new Administrator. We welcome any new members and encourage anyone to contribute. It's a great way to share and receive Red Poll news from around the world.



Our region looks forward to a very wet 2019 and lots of cattle sales.



2018 NATIONAL AGM AND STUD TOUR NEW SOUTH WALES

Report by Jill Coghlan

Thank you to the Red Poll members who came to Goulburn for the Red Poll AGM and Tour on the weekend 10th November. It was a wonderful occasion to share with like minded people everything we love about our Red Poll cattle. We appreciate the distance some people travelled to get there and hope you enjoyed seeing the cattle, spending time with other members and hearing what our guest presenters had to say.

The tour began with a visit to Margaret and Nagy Sorial's Wongajong stud where the cattle looked in excellent condition. A paddock of young bulls and steers were growing out well and the female herd were about to be joined to a new bull that was due to arrive the following day from the Belault stud. All the cattle displayed wonderful temperaments that is typical of the Red Poll breed but also testimony to Margaret and Nagy's handling and management. It was also pleasing to see a tinge of green in the pastures after a very challenging and tough two years of drought. Margaret and Nagy then treated us to a delicious lunch on their verandah overlooking their beautiful cattle grazing below.

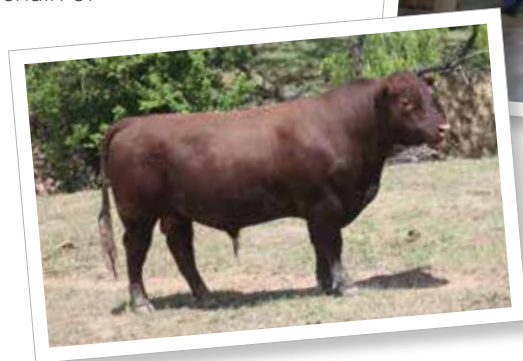
The tour then returned to Goulburn for the National AGM and was followed by the National Executive meeting. The Venue for this was at the Goulburn Soldiers club where afterwards, we conveniently just crossed the hallway to the Merino Room that overlooked the park opposite for our dinner.

Our guest speaker was Gill Sanbrook who single handedly manages her property Bibbaringa at Bowna near Albury. Margaret had seen an article in the Land that reported on Gill's drought strategy where she sold her cattle to keep her pastures and the economic benefits of this. It offered an alternative plan to how most people handle drought and although it's not necessarily applicable for stud cattle producers, it nevertheless left us with ideas and tools to better manage droughts and pastures generally. Our thanks to Gill for your generosity in coming and sharing your story.

Sunday was another perfect day that began at Martin Royd's property, Jillamatong at Braidwood. This property is well known in the district for Martin's work in water retention and soil management. With the help of Peter Andrew's, Martin has constructed a chain of ponds where water is now a permanent feature as water lilies, kabunge and other plants hold and filter the water naturally. Other features such as swales and composting, using offcuts from the local butcher and even treated sewerage were working to improve soil nutrition and pastures. We all appreciated how cost effective these improvements were and great to see them functioning so well.

Our tour then proceeded further along Cooma Road to the stunningly beautiful setting of Alan & Cheryl Couch's Nyalindee stud. It was a clearing of about 500 acres surrounded by pristine forests where their herd of Red Poll cattle grazed. Our ravenous appetites were quickly satisfied with the help of Nathan and daughter Tegan helping with salads etc. Thank you to the Couch family for your wonderful hospitality and also to their granddaughters whom I'm sure will have a great future with the Red Poll breed as they ably answered our questions about the cattle. The Nyalindee herd is a young herd that is full of potential and will be interesting to see how they perform. They looked a credit to the breed and once again displayed a wonderful temperament.

NSW thanks the Red Poll breed for the privilege of hosting the National AGM and Tour. It was a great opportunity to be with each other and show members what some of the NSW studs are doing with their Red Poll cattle. Both Wongajong and Nyalindee are relatively new studs to the breed although the Nyalindee prefix has a long and proud history with the Red Poll breed and Margaret and Nagy are well known for their generous time and efforts over the last few years. Thank you to Margaret and Nagy and Alan and Cheryl for hosting the Tour and for your wonderful hospitality. It was also interesting to hear and see alternate management strategies for managing the land and livestock from our guest presenters, Gill and Martin.



HERD FERTILITY

In beef cattle, it is the job of a cow to conceive, preferably as early in the joining period as possible, carry a foetus during gestation, deliver a live calf and raise it until weaning, and repeat this every year of her breeding life. A cow that does not do this is failing to do her job and erodes herd profitability.

The role of the male although transient is equally important and testicles are one of the most important organs, influencing long term profitability of your breeding herd. Not only are they important for bull fertility, but they can have a significant influence on the fertility of daughters and granddaughters. Use of a bull with poor testicles can influence fertility of female descendants several generations down the track. Testicles are closely related to the uterus and ovaries and deficient testicles in a bull can lead to deficient ovaries in the female.

Bull fertility can be described as optimal, tolerable, undesirable and unacceptable. A bull that gets one cow in a 100 in calf is not sterile, but his fertility certainly would be unacceptable. A bull of optimal fertility should settle 85-90% of cycling cows in the first cycle.

To have optimal fertility a bull should have testicles which hang evenly. Both should resemble a football in shape, be of the same size, and have the same firmness (tone) as a firm orange. The epididymis on each

testicle must be the same, well rounded of similar tone to the testicle and be the size of a walnut. Testicles should be correct circumference and length for age which in a mature bull resembles two drink cans. Any deviation from the above causes decreased fertility.



Scrotal circumference measurements can be taken by anyone. They do not need to be taken by an accredited technician like a veterinarian or ultrasound scanners.

Size and shape of testicle and epididymis have a genetic basis but bull fertility can be affected by many things such as illness, high temperature, drugs and travel.

A bull which is fertile today may not be tomorrow. Bulls who develop degeneration of the testicles seldom recover their fertility. Correct testicles can be identified from a young age.

Consequently, selection for improved reproductive performance in both dam and bull should be an important consideration for all beef cattle producers.



VALE YONGERELLEN'S PHYLLIS WILLIAMS

By Murray Williams



Described by many as 'The end of an era' Phyllis Williams, co-principal of the Yongerellen Red Poll stud, passed away on 30th June aged 96. She had been in permanent care for several years but prior to that had taken an active and very supportive role in the stud and in the Red Poll family.

Her involvement came from the very beginning offering to purchase two females when Murray wanted to start the stud in 1975. She was always very active in WA regional activities and established some great friendships with other women in the breed and enjoyed working with them at shows and field days.

After the death of husband Jack in 1978 she was often accompanied by her sister Thelma Short on 'Red Poll' travels, both interstate and overseas. A very much 'behind the scenes' woman she always helped with getting gear, clothes and food ready to go to a show. She beamed with pride in Adelaide one year when another woman ringside commented on how well ironed Murray's white coat was. She would have had a good understanding of the quality of an animal but never made comment about 'dodgy' judges decisions as she sat around a show ring. 'That was the judge's decision,' and it was not to be questioned.

She was always keen to host visitors to Yongerellen. There would be a meal and often a bed for she enjoyed the company of like-minded people from across the world. She revelled in the occasions that she had the chance to travel and meet them in their own homes. Like many from her era, her kitchen was her nerve centre and if you had your feet under her table you were either family or friend.

She described winning the Governor's Cup (most points across all livestock sections) at Perth Royal Show in 1993 as one of the proudest moments of her life. The Cup was filled with flowers for her funeral.

Red Poll cattle gave a special dimension to her life.

VALE MARGARET DILLON

09.08.1931 - 3.11.2018

By Kate Goulding



Margaret's love of Red Polls started in the early 1970's after seeing a strong line-up of them at the Brisbane Royal. Soon after going to the Show, Margaret and her husband Alan established "Inglewood" Red Poll Stud at their farm at Alstonville with stock from Bundaleer. Then in later introduced more genetics from studs such as Bandaroo, Red Cactus, Mullumbimby, Marel, and many others, and dabbled in a bit of exhibiting herself. She liked a good strong, fertile cow with plenty of milk. Margaret believed that a cow had to have plenty of milk to rear a good calf, and keeping having calves - that's the whole point. Over the years she has supplied many excellent heifers all around the district, after people driving past would see the quality of her cows and calves at foot. She had tried various crosses over her commercial herd, which sparked much interest in the calves from the local buyers.

A visit to Margaret's always meant a cup of tea (as a true English lady), then a whizz across the paddock to see the cows in her farm vehicle - you had to hang onto your hat! Margaret was always very modest about her herd, but dear Margaret, I hope you are proud of your beautiful herd - you should be! She has passed on her love of these gentle red cows to her children - Roger, Heather and David, with David continuing with the herd.

Margaret was fare-welled by Family and friends on the 6th December 2018 in the beautiful St Bartholomew's Anglican Church, which was also a big part of her life.

Margaret was an inspiring lady, having left her home country of England, for the vast land of Australia as a young midwife. I know she inspired me, and I feel privileged to have been a friend.

While either gazing over a gate, or sitting on her verandah watching the cows, Margaret would often say "There's something special about red cows on green grass". How true you are.

MEMBERSHIP DIRECTORY

NSW – Full Members

M J BASSULA

PO Box 197
Tumbarumba NSW 2653
P: 02 6948 4098
M: 0427 482 289
E: redphoenixone@skymesh.com.au
HMB RED PHOENIX

STEPHEN BOYD

PO Box 261
Bellingen NSW 2454
M: 0421 761 675
E: kiniagman1@gmail.com
BEL BELLAROSA

A CARROLL & B ADAMS

C/- Long Flat Post Office
Long Flat NSW 2446
P: 02 6587 7212
M: 0434 626 082
E: andrew.l.carroll18@gmail.com
BBH BOTTLEBRUSH HILL

B CLARKE

7 Richardson Street
Goonellabah NSW 2480
P: 02 6624 1268
B RHOSLLAN

I A & J COGLAN

Eurimbla Red Poll Stud
148 Rodgers Road East
Gerogery NSW 2642
P: 02 6026 0630
M: 0412 650 050
E: eurimbla@live.com.au
IJC EURIMBLA

A & C COUCH

23 Adamson Crescent
Wanniassa ACT 2903
P: 02 6231 5440
M: 0400 187 260
E: alan@couch.net.au
ND NYALINDEE

R E & F R DRYSDALE

285 Upper Rollands Plains Road
Rollands Plains NSW 2441
P: 02 6585 8022
M: 0427 858 022
E: willorn47@bigpond.com
KFD WILLORN

N FASEAS

167 Private Access M1
Mulbring NSW 2323
P: 02 4938 0093
M: 0408 498 233
E: nick@paragoncivil.com.au
SS SPLENDID

NSW – Full Members

E HERBERT

768 Boomey Lane
Boomey via Molong NSW 2866
P: 02 6332 3745
M: 0428 412 787
E: lazytok@southernphone.com.au
TOK LAZY TOK

T & G HILL

Eurunga
Culcairn NSW 2660
P: 0429 042 979
M: 0429 636 527
E: eurunga18@gmail.com
IP INGLEDEN

G MULCAHY

1027 Horsley Drive
Wetherill Park NSW 2164
P: 02 9604 5846
M: 0418 417 899
E: garrick.mulcahy@bigpond.com
GJM WIRAKIE

O & A REINHARDT

23 Mcclung Street
Gungahlin ACT 2912
P: 0411 253933
M: 0411 253 933
E: owen@peppervale.com.au
OAR PEPPERVALE

L SALZKE

5 Bowler Street
Braidwood NSW 2622
M: 0428 759685
E: teash_13@hotmail.com
JLS JACKPOT

C & M SMITH

Belault
1201 Mayfield Road
Tarago NSW 2580
P: 02 4842 7188
M: 0427 827 992
E: belault@gmail.com
LCS BELAULT

J A SMITH

PO Box 238
Figtree NSW 2525
P: 02 4842 7188
M: 0412 332 640
E: jude.annel@hotmail.com
DAS GLENROSSAL

K & M SMITH

1268 Gurrundah Road
Goulburn NSW 2580
P: 02 4829 2121
M: 0409 605 905
E: keimoi.cattle@gmail.com
KMS YARRA

NSW – Full Members

N & M SORIAL

Wongajong
226 Gurrundah Road
Baw Baw NSW 2580
P: 02 4822 8402
M: 0410 483 014
E: wongajong_farm@bigpond.com
MCS MCSORIAL

RJ & SD WILKINSON

1260 The Northern Road
Bringelly NSW 2556
P: 02 4774 8692
M: 0413 581 098
E: rjwilko_bal@hotmail.com
RSW BALADEE

NSW – Junior Members

BELLINGEN HIGH SCHOOL

PO Box 203
Bellingen NSW 2454
P: 02 6655 1315
E: bellingen-h.school@det.nsw.edu.au
BHY BELL-HY

BOWRAVILLE CENTRAL SCHOOL

High Street
Bowraville NSW 2449
P: 02 6564 7162
M: 0450 957 883
E: bowraville-c.school@det.nsw.edu.au
BOW BOWRAVILLE

KING ESTATE INTERNATIONAL

99 Sargents Road
Ebenezer NSW 2756
M: 0418 483 044
E: james.osborn@elders.com.au
JNA KING ESTATE

A J LEICESTER

14 Swinbourne Cr
Wetherill Park NSW 2164
M: 0403 421 379
E: aidan_itunes@hotmail.com.au
ANG BABANA

MODEL FARMS HIGH

Gooden Drive
Baulkham Hills NSW 2153
P: 02 9624 3133
M: 0404 437 264
E: modelfarms-h.school@det.nsw.edu.au
MFH MODEL FARMS

TUMBARUMBA HIGH SCHOOL

C/- Caroline Coleman
101 Tooma Road
Tumbarumba NSW 2653
P: 02 6948 2500
M: 0431 218 608
E: tumbarumba-h.school@det.nsw.edu.au
TUM

NSW – Junior Members

WAUCHOPE HIGH SCHOOL

Nelson Street
Wauchope NSW 2446
P: 02 6585 1400
E: adrian.palmer@det.nsw.edu.au
WHS WAUCHOPE HIGH

NSW – Commercial Members

BALLYCASTLE PASTORAL CO

Bally Castle
2063 Range Road
Goulburn NSW 2580
P: 02 4829 2353
M: 0412 481 309
E: ballycastle@mac.com
BPC

J & B CADDY

PO Box 959
Tamworth NSW 2340
P: 02 6760 9177
JBY

KEITH R CAREW

6 Gray Street
Henley NSW 2111
P: 02 9816 4572
M: 0419 997 328
E: keithrcarew@gmail.com
KRC

K H & K B CORBETT

5 Gillett Street
South Grafton NSW 2460
P: 02 6642 6315
KKC

BG GODFREY

Hurie Park
553 Wherrol Flat Road
Wherrol Flat NSW 2429
P: 02 6550 7297
HRG HURIE PARK

PE MUNGE

“Shannon”
Guinema Road
Bugaldie NSW 2357
P: 02 6843 4459
E: pcmunge@bigpond.com
PEM

TE RUMBEL

835 Mill Creek Road
Stroud NSW 2425
P: 02 4994 5426
M: 02 4994 5223
TER

WOOLING PASTORAL COMPANY

Llandillo
5594 Boorowa Road
Crookwell NSW 2583
P: 02 4836 5244
M: 0407 571 521
E: alexkc@wooling.com.au
WPC

NSW – Magazine Members

IAN & RUTH HENDERSON

58 Cedarwood Drive
Cherrybrook NSW 2126
P: 02 9875 2194
M: 0417 682 257
E: avalonbinda@bigpond.com
IR DENERSON

NNSW/QLD – Full Members

R ANGAS-FRENEY

407 Goldburg Road
North Deep Creek QLD 4570
M: 0407 142 213
E: rangas6@bigpond.com
HCA TARRA

B A & L T BECKHAM

PO Box 154
Casino NSW 2470
P: 02 6663 7127
M: 0409 032 218
TQY TRANQUILITY

G J & D I BRASSINGTON

PO Box 20
Helidon QLD 4344
P: 07 4697 6090
M: 0407 976 090
E: daphne@brassingtonfam.com
GDB BROADACRE VALLEY

R.G. BURNES

PO Box 448
Coolangatta QLD 4225
P: 07 5590 7148
M: 0404 239 923
HT MOA VALE

KA & MR CLARKE

PO Box 324
Bellingen NSW 2454
P: 02 6655 0202
M: 0456 109 246
E: michael.r.clarke@gmail.com
MBV MISTY BELL VISTA

RC & AC DAWES

Rosemont
Piggabeen Road
Piggabeen NSW 2486
M: 0429 909 463
RJ PICCABEEN VALLEY

M C & D J DILLON

24 Central Park Drive
Wollongbar NSW 2477
P: 02 6628 0839
M: 0414 280 369
E: d.j.dillon@westnet.com.au
AMD INGLEWOOD

K GOULDING & D JENSEN

PO Box 3045
Lismore NSW 2480
P: 02 6663 1206
M: 0488 536 923
E: katgo@mullum.com.au
KAT MINYON

NNSW/QLD – Full Members

AJ, RM & DJ HANCOCK

Yarraldool
Pinkett Road
Glen Innes NSW 2370
P: 02 6733 4666
M: 0432 581 493
E: hancock45@hotmail.com
RAH KOOKABOOKRA

P HANCOCK

“Wellrock”
110 Blacks Road
Glen Innes NSW 2370
P: 02 6732 4742
PMH GLENLEIGH

L HERZIG

PO Box 39
Clifton QLD 4361
P: 07 4697 3204
LDH TALGAI VALE

N & P LEE

“Bindaree”
51 Claremont Road
Quirindi NSW 2343
P: 02 6747 4674
M: 0429 990 388
E: abbottlelee@bigpond.com
NAL OMEGA 3

RA, VA, TD & EL LIGHT

“Lagoona”
191 Dumaresq Road
Armidale NSW 2350
P: 02 6775 1129
M: 0458 744 552
E: lagoona191@bigpond.com
TEL LAGOONA

LONGLEY RED POLL STUD

97 Dyraaba Street
Casino NSW 2470
P: 02 6660 1108
M: 0408 431 104
E: accounts@richdairies.com
FFI LONGLEY

K & N USHER

62 Munday Lane
Saumarez Ponds NSW 2350
P: 02 6775 1069
M: 0408 073 427
E: kim.usher@une.edu.au
NLC RED RUSH

S & K WILLIAMS

Goondidi
364 Woodlands Road
Greenmount QLD 4359
P: 07 4697 1615
M: 0428 458 535
E: steven.williams@dnrm.qld.gov.au
WIL WILANSTIE

NNSW/QLD - Junior Members**E CUNNINGHAM**

Carndhu
1 Carndhu Road
Armidale NSW 2350
P: 02 6775 8345
M: 0499 221 528
E: freddie.74@live.com
ECL ROCKVIEW

C D JONES

Raino
Grove Road
Bundarra NSW 2359
P: 02 6723 3112
M: 0474 968 745
CDJ ROSELEE

J MCCLENAGHAN

35 Swan Street
Inverell NSW 2360
M: 0467 189 511
E: littlelenaghanredpolls@gmail.com
JES LITTLELENAGHAN

TYLER MARTINDALE

11 Valleyview Drive
Bellingen NSW 2454
M: 0437 550 031
E: martindale@westnet.com.au
TYL

LILLEAH NEWBERRY

572 Square Range Road
Glen Innes NSW 2370
P: 02 6733 4653
M: 0438 324 606
E: thewildnewberrys@activ8.net.au
LGN LILVALE

CAITLIN USHER

14 Freedom Crescent
South Ripley QLD 4306
M: 0408 396 526
E: nathan.usher@cummins.com
USH

P, G & S WHIBLEY

920 Stanester Road
Pallamallawa NSW 2399
P: 02 6754 9510
M: 0437 385775
WHB

S WOODS

60 Munday Lane
Saumarez Ponds NSW 2350
M: 0422 673 074
E: samwoods1123456789@gmail.com
WOO

NNSW/QLD - Commercial Members**J BOCKMAN & J RHEA**

2376 Warwick-Allora Road
Allora QLD 4362
P: 0437 551 842
E: jack.n.jill@bigpond.com

I & J HOPPER

Callemondah
Porter's Gap MS 360
Bell QLD 4408
P: 07 5594 0980
M: 07 5594 0228
CMH CALLEMONDAH PARK

I & B HUTCHINSON

Wirrabilla
Limestone Ridges Road
Peak Crossing QLD 4306
P: 07 5467 2136
M: 0410 431 850
E: jindavick@bigpond.com
BIH JINDAVICK

PW MULLER

51 Merino Street
Toowoomba QLD 4350
P: 07 4635 1471
M: 0487 171 835
E: peter.muller5@bigpond.com
PWM

B.K. & T.A. MUNT

Rhodesmount
3539 New England Highway
Wutul QLD 4352
P: 07 4692 6196
E: btasmmunt@skymesh.com.au
\$67

G.A. & J.J. WEHL

36 Mt Rascal Road
M/S 1497
Toowoomba QLD 4350
P: 07 4630 1109
M: 0428 717 178
E: jeanette.wehl@gmail.com
MTR RED RIDGE

NZ - Full Members**MARTINVALE FARMS LTD**

62 Taylor Road
RD1 Waiotira 0193
P: 64 9432 9087
E: mvfarms@ihug.co.nz
QVA MARTINVALE

SA - Life Members**R.M.WILSON & SON**

Oakwood
Brentwood via Minlaton SA 5575
P: 08 8853 4223
M: 0428 434 534
E: wilsonbeef@hotmail.com
RMW OAKWOOD

SA - Full Members**DR RWR & KL DALEY**

PO Box 169
Jamestown SA 5491
P: 08 8664 1463
M: 0438 641 463
E: moylepark@ozemail.com.au
MPS MOYLE PARK

J K GRAHAM & CO

PO Box 130
Ardrossan SA 5571
P: 08 8837 3327
M: 0438 373577
E: vkrowntree@gmail.com
KGW VIRANGRA

DS & SJ LINES

PO Box 712
Gawler SA 5118
M: 0415 797506
E: david@stockridge.com.au
SRR STOCKRIDGE

W.J. MCCALLUM

PO Box 133
Booleroo Centre SA 5482
P: 08 8666 6062
MDS WINDY PLAINS

MALEER PARTNERS

CJ & DM Malone
PO Box 47
Jamestown SA 5491
P: 08 8665 4037
M: 0418 807 414
E: jvmalone1@bigpond.com
VJM MALEER

PETER WILSON

PO Box 251
Minlaton SA 5575
P: 08 8853 4104
M: 0408 534 071
E: pcklwilson@hotmail.com
405

SA - Junior Members**C HUGHES**

PO Box 245
Booleroo Centre SA 5482
P: 0448 760 444
M: 0448 294 331
E: casskylie@gmail.com
WDV WILSDONVIEW

SA - Commercial Members**P J & C A HAY**

99 Lonnvale Road
Judbury TAS 7109
P: 03 6237 0092
HAY RUBY LACE

R.H.W. & S.D. SAMPSON

PO Box 176
Strathalbyn SA 5255
P: 08 8536 6021
\$66

SA - Commercial Members

T.A. & H. SISMEY

Box 1161
Naracoorte SA 5271
P: 08 8762 3186
TJ OTWAY

J STOCKHAM

PO Box 51
Woodside SA 5244
P: 08 8538 7027
REG REGALER RED

SA - Magazine Members

IL RODGERS

17 Arthur Street
Cummins SA 5631
P: 08 86762614
RHB GUM HILL

VIC - Life Members

R DRAPER

75 Running Creek Road
Arthurs Creek VIC 3099
P: 0428 510 252
M: 0428 510 252
E: redcactus@bigpond.com
MRD RED CACTUS

H M SPALDING

5 Harding Grove
Cardigan Village VIC 3352
P: 03 5344 8344
ACE CATHRO

VIC - Full Members

GM & KJ ABBOTT

287 Kolora Lane
Kolora VIC 3265
P: 03 5592 7224
M: 0438 922 313
E: gk.abbott@bigpond.com
EMA TURANGA

CABBAGE TREE HILL PASTORAL CO

PO Box 123
Buninyong VIC 3357
P: 03 5341 3133
M: 0419 547 181
E: redhotpolls@aanet.com.au
CTH RED HOT

DR CASTLE

2205 Princes Highway
Stoneyford VIC 3260
M: 0417 169 914
DBC KOALLAH PARK

G L & J J CROWE

7 Nunn Street
Benalla VIC 3672
P: 03 5762 4552
GJC GJC

VIC - Full Members

D J D'OLIVER

PO Box 227
Pakenham VIC 3810
P: 03 5664 9387
E: stcerry@gmail.com
DJD ST CERRY

B E & L E JOHNSON

395 Extons Road
Kingslake Central VIC 3757
P: 03 5786 1431
E: be.johnson@bigpond.com
BLJ LYNBARRY

F J & M D MCCORMACK

PO Box 59
Mansfield VIC 3724
P: 03 5775 2074
M: 0409 951 903
F+M CYPRESS

F & A K MOYA

560 Seven Mile Road
Nar Nar Goon VIC 3812
P: 03 5942 5473
E: a.k.moya@bigpond.net.au
MFA TIRASLEA

A & J MUNRO

134 Moormbool Road
Costerfield VIC 3523
P: 03 5794 9219
M: 0439 782 198
SBR SUMMER BRAE

DN PAYNE

PO Box 160
Kilmore VIC 3764
P: 03 5782 1002
M: 0418 587 655
E: dnpayne@bigpond.net.au
HP WOODBURN

J RAND

Balla Balla
1300 Baxter-Tooradin Road
Cannons Creek VIC 3977
P: 03 5998 2212
M: 0419 337 760
E: judyrand@ozemail.com.au
BAL BALLA BALLA

RT, VM, TR & J READ

965 Pinegrove Sth Road
Tennyson VIC 3572
P: 03 5488 2266
M: 0428 332 793
E: gumleypark@skymesh.com.au
TRR LINCOLNDELL

SEMEX PTY LTD

Semex Pty Ltd
PO Box 509
Melton VIC 3337
P: 03 9743 0344
E: semex@semex.com.au
SMX SEMEX

VIC - Full Members

I A & N F STAFF

65 Burtons Road
Pheasant Creek VIC 3757
P: 03 5786 5251
M: 0411 314 501
E: ianstaff@techinfo.com.au
NIS SOPHRONITES

S STORM & SONS

51 Neimur Street
Barham NSW 2732
P: 03 5453 2140
E: stormley@dragnet.com.au
SJS STORMLEY

G WARD

PO Box 460
Altona North VIC 3025
M: 0417 558 508
E: honerv@gmail.com
DGW REDWARD

VIC - Junior Members

B HOLDING

21 Peregrine Pl
Carrum Downs VIC 3201
P: 03 9776 4154
GJH

C MACKELMANN

Glenwyn Red Poll Stud
208 Jenkins Road
Congupna VIC 3633
P: 03 5829 9855
E: carlie.mackelmann@gmail.com
CMC GLENWYN

VIC - Commercial Members

RP & J AITKEN

457 Velore Road
Denison VIC 3858
P: 03 5149 2467
E: jewels@wideband.net.au
RJA

T & A ARNOLD

1075 Echuca Road
Mooroopna North VIC 3629
P: 03 5829 0289
M: 0418 549 031
E: arnold.a.t@bigpond.com.au
TAA GLEN ALVIE

WL BATH

PO Box 50
Balmoral VIC 3407
P: 03 5570 1327
E: bmbath@bigpond.com
WLB BILTMORE

J BUXTON

641 Sale Maffra Road
Bundalaguah VIC 3851
P: 03 5147 2403
E: jcbuxton3@outlook.com
JBN

VIC – Commercial Members

RJ KELLEHER

Navarre VIC 3384
P: 03 5357 4100
RJK

P & J MCANINLY

30 Bodmans Road
Won Wron VIC 3971
P: 03 5182 5899
M: 03 5182 6977
PJM

P MAWDSLEY

445 Mardan-Dumbalk Road
Dumbalk VIC 3956
M: 0413 455 456
E: info@finmawfarm.com.au
FMF FINMAW

B & T NUTTING

Box 47
Hawkesdale VIC 3287
P: 03 5560 7304
BTN

A SMITH

680 Ghazeepore Road
Freshwater Creek VIC 3217
P: 03 5264 5147
M: 0429 199 159
E: andyghaz@gmail.com
SMI

TW ROBBINS

C/O K Coen
167 McLaughlans Lane
Plenty VIC 3090
M: 0419 380 301
E: tony.robbins@jackhouse.biz
NAA NATHANA

S WAINWRIGHT

Box 601
Emerald VIC 3782
E: kymmitsu@gmail.com
SWW

VIC – Magazine Members

G HALLIDAY

4950 Barmah-Shepparton Road
Bunbartha VIC 3634
P: 03 58269564
LOH ALMORA

WA – Life Members

J H WILLIAMS & CO

PO Box 100
Quairading WA 6383
P: 08 9645 5220
M: 0429 455 220 TEX ONLY
E: yongerellen@activ8.net.au
J6H YONGERELLEN

WA – Full Members

E & J GHILARDUCCI

1189 Brookton Highway
Karragullen WA 6111
P: 08 9397 5936
M: 0418 913 381
E: paulghil@yahoo.com.au
EIG KARRADACE

Q & S HOOPER

PO Box 94
Wembley WA 6913
P: 08 9242 8894
M: 0419 041 220
E: redsandsredpoll@yahoo.com.au
QPH RED SANDS

L & A LONGFORD

PO Box 100
Quairading WA 6383
P: 0458 560 853
M: 0428 940 379
E: alex_longford96@hotmail.com
LA6 LE TOPAZ

WA – Junior Members

Oliver Mcleary

PO Box 53
Corrigin WA 6315
M: 0497 193 447
E: oamcleary@gmail.com
RUM RUM RIVER

WA – Commercial Members

CORANNING PTY LTD

1460 North Wandering Road
Wandering WA 6308
P: 08 9887 6030
M: 0429 944 683
E: coranning@westnet.com.au
NB4 CORANNING

ADVERTISING INDEX

Balla Balla.....	page 5
Eurimbla.....	page 9
Glen Leigh.....	page 13
Glenwyn.....	page 5
Kookabookra.....	page 10
Lagoona.....	page 10
Maleer.....	page 22
Minyon.....	page 13
Omega 3.....	page 13
Peppervale.....	page 9
Redrush.....	page 11
Red Cactus.....	back cover
Sophonites.....	page 4
Stormley.....	page 21
Turanga.....	page 19
Wilson.....	page 23
Woodburn.....	page 19
Yongerellen.....	page 16





Sires Progeny
1st & 2nd **3rd**

RED cactus

**Kubota
Sponsorship ✓**



**Great Team Thankyou
+ Jayde, Darryl, Megan**



JOE
Supreme Exhibit
2018 Royal Melbourne Show
Red Poll Feature



JOE BOY



JOSEPHINE

**Breeding
Quality
Cattle**

Supreme All Breeds Exhibit - Champion All Breeds Female - Whittlesea 2018

ROSS DRAPER 0428 510 252

Email redcactus@bigpond.com www.redcactusredpoll.com