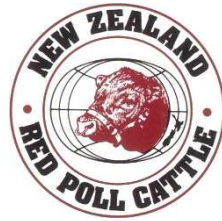


RED POLL

NEWS



Summer Edition December 2015



DIRECTORY

Patrons	Peter Fleming & Robin Shepherd	
President	Graeme Evans Email	06 378 2051 gljs.evans@xtra.co.nz
Secretary	Anne McSweeney Email	03 693 8862 redpolls@slingshot.co.nz
Vice-Presidents	Kelvin Lane	06 362 7254
	Ian Fleming Email	03 329 1787 iafleming@scorch.co.nz
Executive	Allan Bridson Email	07 865 8642 ahbridson@slingshot.co.nz
	Helen McKenzie Email	06 372 7842 rosemarkie@wise.net.nz
	Mike McSweeney Email	03 693 8862 annie.mcsweeney.am@gmail.com
Editor	Helen McKenzie Email	06 372 7842 rosemarkie@wise.net.nz
Website:	www.redpollcattle.co.nz	

NB: This newsletter is on the website in a PDF file

The Association accepts no responsibility for the accuracy of any published opinion nor information supplied by individuals or reprinted from other sources. Items may be abridged or edited.

Closing date for next newsletter is March 1st 2016

Cover: Rosemarkie Emir Nike and her brand new first calf, a heifer, sired by Ketlang Monarch. Owned by Beat & Anne-Marie Murer of Pheasant Hill Red Polls.

CONTENTS

02	Directory
03	Contents
04	President's Page
05	Secretary's Say
06	Editor & AGM Preliminary dates
07	Patron's Page I 'The Editor Implores' - Robin Shepherd
08	Patron's Page II 'Otahuna Book Review', Peter Fleming
09	14 th World Congress - The Congress
21	Rangitahi Stud
22	World Congress USA 2017 - Update
23	USA Tour – tentative itinerary
24	Strathwell Report
25	Pheasant Hill
26	Houto Stud
27	Dawn Mist Stud
28	Photos from the Editor's files
29	Evanlea Report
30	Opoutere Report
31	Tamihana Report
33	Rosemarkie Report
34	Bit of History – 'Cows for The Churn'
35	Australian News
37	Congress Scholars' biographies
38	Recipe – Summer Beef Stroganoff

PRESIDENT'S PAGE

Once again we are getting closer to the end of the year and as usual plenty of things to get done. I trust all members have had a good calving and are pleased with their new crop.

It is that time of the year to register new season's calves and I hope all breeders will attend to this as soon as possible.

Weather conditions have been very mixed around the country with wet conditions in the far south to a late spring in many parts of the North Island. This makes farming in some areas very challenging and keeps all wondering what will happen next. Still a lot of speculation on being a dry summer but we have been warned. Silage and balage has started and comments amongst contractors are that farmers are getting it made earlier this season rather than leaving it till later in the season.

In November I attended the Royal Show in Hastings. The only Red Poll exhibitors were Rosemarkie and Evanlea Studs. I realise it is expensive to attend this three day event but it gave the breed an opportunity to have cattle in front of the public. Rosemarkie entered a very nice yearling bull and Evanlea a cow and calf.

The sale of bulls this season is slower than the last few, perhaps the fall in dairy prices has some effect but agents are still confident good animals always sell well.

Our next Herd Tour and AGM is to be held in Canterbury and I would like to see as many members as possible to attend. It is a time to catch up with friends and fellow breeders and to exchange breeding ideas with each other.

Judy and I wish you and your families a peaceful festive season and hope you manage to find some time to relax and spend time with loved ones.

Graeme Evans
President



SECRETARY'S SAY

A welcome rain has arrived in South Canterbury this week, and I hope all of those who need it are also getting some worthwhile precipitation.

I hope calving has gone well for you all and plans for making supplements are falling into place. Please get your updated Herd Pre-lists to me as soon as practicable – if you have misplaced your current herd list, just send me an e-mail and I will send you a replacement.

HERD SIRE DNA's: If you read our AGM minutes you will see from the Zoetis report that they now prefer ear samples for DNA profiling (although they will still accept tail hair samples.) If you have a bull for testing and need a sampling kit, give Zoetis a ring (0800228278) or go to their website: www.zoetis.co.nz. Sample submission forms need to be sent with the sample and please request that they e-mail a copy of the result to NZ Red Poll Cattle Breeders Assn.

CONGRATULATIONS to Helen McKenzie and Warwick Potts on doing very well with their young Rosemarkie bull at the Royal Show, and also to Graeme and Judy Evans who also did well with their Evanlea heifer.

Wishing you all an enjoyable Xmas and New Year and hope you all have some pleasant relaxing breaks over the summer months.

Reminder: REGISTRATION FEES: Fees double after animal is a year old.

MALES	\$15.00
FEMALES	\$10.00

Anne McSweeney
282 Woodside Road
RD 21, Geraldine 7991
Ph/Fax (03) 6938862
Email: redpolls@slingshot.co.nz

FROM THE EDITOR

Thanks to those of you who have provided items for this newsletter. I look forward to more for the next issue!



If anyone has any ideas for other topics or things they would like to see in this newsletter, please let me know.

I already have some great photos and an article from Jimmy Brooks in Kenya for the April 2016 issue.

Contributions – articles and photos - from breeders both in NZ and abroad are always welcome.

Helen

AGM, Sale & Herd Tour 2016 Canterbury

At this stage the tentative dates for the AGM etc will be from Wednesday the 20th of April to Friday 22nd or Saturday 23rd April (during the School Holidays).

Dates to be confirmed!

Further information will come out with the annual accounts in February.

If you have any queries prior to that please contact Anne McSweeney,
Breed Secretary 03 693 8862 or

email her on: redpolls@slingshot.co.nz

Canterbury is in the South Island of NZ for any breeders from overseas who may be interested in joining in.

PATRONS' PAGE I



THE EDITOR IMPLORES

Please, please the editor implored

Please put your pen to paper

Or if instead a photograph

Might suit your chosen caper

She'll take it all and set in print

She may even print in colour

Because she needs the news from you to tell the other fella'

No matter how mundane or bland

No matter that it's tame

We need the news from everyone

Our newsletter to sustain.

So sharpen up that pencil stub

And photograph a cow

And get that off to Helen

And try and do it now.

Robin Shepherd, November 2015



PATRONS' PAGE II

Not a great deal happening at present, although one item that may be of interest is the publication of a book by the American owners of Otahuna homestead; the home of the first Red Poll cattle imported into New Zealand by Sir Heaton Rhodes in 1898.

Association members returned there in 1998 for the centennial of the breed's arrival in New Zealand. Anne McKay was one of the then owners and an enthusiastic member of the Association with a small herd of Red Polls.

The property is now owned by Hall Cannon and Miles Refo, Americans from Tennessee and Massachusetts respectively. In May 2005 they came to NZ for a three month look around with the thought that they would buy something if they liked it. A preliminary look at Otahuna didn't impress them, and they continued on, then back north to British Columbia and the west coast of America. In January 2006 they returned to NZ and were determined to find somewhere to call home. They begrudgingly went back to Otahuna on the advice of a real estate agent and this time liked what they saw. The purchase included the 111 year old homestead which when built, was New Zealand's largest private home, now surrounded by a garden of national significance and thirty acres of land. They set about making it one of New Zealand premier guest lodges.

Association members had a brief look around the gardens the last time the Herd Tour & AGM was in Canterbury, when we surveyed some of the earthquake damage, at the Tai Tapu church etc.

The book is called "**For the Love of a Place; the Stories and Cuisine of Otahuna**" by Hall Cannon and Miles Refo with Simon Farrell-Green. Published by Penguin Random House NZ. RRP \$80

Your local library will have a copy if you don't want to buy one although you may have to wait a while to obtain it – it is certainly popular in Canterbury with a long waiting list.



RED POLL INTERNATIONAL CONGRESS 2014

The Congress, Albury

Theme: "RED POLLS MAKING A DIFFERENCE"

Sunday 2nd November, Day 13 continued

After the Whittlesea Show, and en route to Wodonga and Albury, where we will have a three day stay at Rydges Hotel; ready for the Congress tomorrow.

Whittlesea is 280 kms from Wodonga/Albury. The Whitlam Federal Government was keen on decentralising businesses and population to rural areas in order to keep the growth of the big coastal cities to a manageable size. Unfortunately Malcolm Fraser's Government did not continue with the incentives and consequently Wodonga/Albury has a current population of around 140,000 instead of the 300,000 Whitlam envisaged. The combined city is actually two large townships divided by the Murray River and in fact in two states; Wodonga, to the south in Victoria, and Albury, to the north, in New South Wales. Albury has stronger links to Victoria as Melbourne is closer than Sydney and they receive Victorian Television stations.

About 112kms from Albury we entered Ned Kelly country. He was born in Seymour. He was given a bravery award for saving a swimmer and was known as a good horseman and champion boxer. After a career as a notorious bush ranger he was eventually captured and hanged in Melbourne in 1891. Shortly after there we stopped at a service area and had a very welcome break at a McDonalds. There were several very focussed people heading to the loos!

On arrival in Albury we sorted out our rooms etc at the Hotel, then climbed back on the bus to return over the river to La Maison Cafe in Wodonga for dinner. Alternate serve for the second time.

Monday 3rd November, Day 14 – The Congress

The hotel was having a major upgrade. The lifts were eccentric to say the least. I dashed down to the laundry at 6am and the machines were already taken. The hardest part of the tour has been keeping up with the washing! Heading to breakfast and the fire alarm was goes off – Murray William's toast! We went for a short walk in town after breakfast to clear the brain for the Congress to come.

Murray Williams, from Western Australia, welcomed everyone to the Congress. He said congratulations were in order to Dr Karl Wellington as he had recently been awarded the 'Order of Jamaica' - for his lifetime's work with Animal Genetics.

The meeting was opened by **Mr Tim Fischer** using a pre filmed video taken at Eurimbla Stud. He has been involved in politics since 1971 and is a past deputy Prime Minister under the Howard Government as well as a prolific traveller and author. He was Australian Ambassador to the Holy See from 2008 to 2012. He said he grew up next door to a herd of Red Poll cattle owned by friends of Murray Williams.

[Note the following items are from my notes, and in places I will have abbreviated or excluded some items. The photos are courtesy of the Australian Red Poll Annual 2014 – Editor]

The first speaker was **Mr Ian Coghlan** on "**Marketing Red**

Polls". Ian gave a brief outline of his background with Red Polls. Eurimbla was founded in 1974 with 7 heifers from the family's Ingleden stud. He was the national President of Australian Red Poll Cattle Breeders from 2000 to 2004. He is a lecturer in Marketing at Charles Sturt University. He has had 20 papers published in Australia and overseas and is completing a PhD on market motivations for the purchase of breeding stock.



He said there are no easy answers. The breed varies from country to country (8 countries) with different operating environments.

The certainties are

- that we have a wonderful breed of cattle
- that we are a minor breed in most countries
- unless we make changes the breed's decline will continue
- that we can make a difference – we have to be honest, to consider the market and not try to be all things to all people.

The supply chain starts with consumers who tell the retailers what they want; then abattoirs – feedlots; commercial producers; stud breeders. Focus on what the commercial breeder wants – money in pockets!

What makes opinion leaders - stock & station agents, farm consultants *et al* recommend, or not recommend, Red Polls?

We need to disseminate the evidence of our success.

We need to give satisfaction to buyers and inspire loyalty to the breed.
We need to understand the markets and provide what they want; to offer after sales service – build relationships with our buyers e.g.
Core product - profit
Expected product – bull
Augmented product – warranty
Potential product – guaranteed feedlot entry

Planning

Road map to objectives – breed and herd
Establish where we are now – minor but good
Where we wish to get to - How to get there!
'Means by which we make a difference'
Planning blueprint: Mission, Goals, Target Markets, Market Positioning, Strategies, Financials – monitor, measure, update. Ian recommended an article reprinted in the 2013 Australian Red Poll annual from the Red Poll newsletter, March 1973, called 'Economic Usefulness'.
Do we need to have a more commercially relevant focus – not Breed finer points? Red Polls have a number of good points; high performers – identify performance points (records); good structure - appealing looks as they are 'made right'.

Red Polls Have Made A Difference

Combined milk and beef production
Contributed to making other breeds – Senepol, Polled Hereford
Proven efficiency – Nebraska trials – need to update results
Winning steer and carcass competitions

Future

Study markets
Sell solutions rather than product
Evidence of quality and performance
Social, psychological & personal (like the colour, neighbours have them) to functional values
Establish relationship with customers
Be able to adjust to market needs. PLAN!

Mr John Buxton was the second speaker talking on “**What I Am Looking For When Buying A Bull**”.

Johns runs commercial cattle. He makes ‘direct to public’ sales of sides of beef. He believes we must ‘mine the pasture curve’ i.e. make the best use of the available pasture by having the right sort of stock on hand to utilise it. John said that, “manufacturing beef is the biggest percentage of earnings on weight”.



‘Flexibility’ was his keyword for the Red Poll breed. They are suitable for all situations and all markets.

One third of his herd turns over annually. He applies great pressure on fertility and getting back into calf as quickly as possible. His heifers are joined at 15 months of age. 80% get in calf within 6 weeks and those that don’t are not given a second chance. His cows are also expected to get straight back in calf. Those that take too long are slaughtered.

Regarding choosing his bulls: - he would like serving capacity and mating soundness tests to be done. He regards EBV’s as the front of the shop window.

Rachel Hancock (Australia) summed his talk up well with this excerpt [abridged] from her website: *‘He basically told us when he is looking for a bull he will do a search for females on the web using figures [EBV’s]. From this he then looks at how many calves she has had and what time of year. If he sees a cow that has had a calf every year and basically at the same time each year, he gets excited and wants a bull from this cow. He then went into how harsh his culling program is, no cow or heifer gets a second chance and if they don’t perform then they are out. I think the amount of pressure he puts on his breeding stock shocked us all.’*

Mr Gerald Spry is a Shorthorn breeder with 200 stud cows plus progeny and some commercials. He has judged many breeds across Australia and sold semen from his bulls around the world. He believes the secret of success is to learn from your mistakes. His topic was “**Breeding Stud cattle for Performance and Profit**”.



In his bulls he is looking for good 400 day weights. He prefers

frame scores of 5½ to 6½ with quick maturing and easy calving. Females get no second chances – if not in calf they are gone. He doesn't cull on age as long as the cow is producing a good calf. Progeny must be able to fatten/finish on grass.

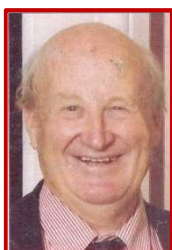
Gerald looks for balanced EBV's with no extremes for muscle or growth – he finds these animals tend to have longevity.

He is a great believer in promoting the Junior Movement. He recommends buying a good older cow or two to start them off.

His challenge for Red Polls is 'Identify Your Weaknesses'. Support each other in identifying problems – present a united front.

As a judge he says, "One should never underestimate a Red Poll in carcass competitions!"

Murray Williams commented that other meats (chicken, pork etc), not other breeds, are our competition.



Mr Don Lawson, OAM was the fourth speaker. Don was educated at Lincoln University. In Australia he lectured at Marcus Oldham College and was instrumental in establishing, and became President of, what is now known as Breedplan. He and his family established 'Lawson's Angus' stud at Yea in Victoria.

Don's topic was "**The Beef Industry in Perspective**".

As a breeder Don was concerned about the way Angus were going. A group was formed to measure and record Angus – in his words, "it was like teaching evolution in Tennessee". His guide was Dr Robert Long, director of Performance at Ankony Angus stud (approx. 5,000 registered cows) in the late 1960's. The stud measured muscling, frame, structural soundness, breed character and trimness. Don considers Mark Gardner from Kansas as the current #1 cattle breeder in the world.

He suggested travelling incognito to get the 'real story' on your breed. There is a need to identify and multiply superior animals. There can be up to \$600 difference between sire lines in profit per beast. Also need to focus on marbling and meat quality. Get the product right and go to the market. He thinks the Red Poll could be one of the key breeds for a composite breed.

With regard to coat colour and suitability for Australian conditions, white is the best, red next and black last. The biggest selling Australian bull overseas is the Red Angus.

A calm temperament is needed.

He described the Red Poll as a compost bin on 4 legs. Find out how it works!

Breedplan tells you most things you can't see by eye.

He mentioned that the Red Poll was the only breed that ovulated under extreme stress in the MARC Nebraska trials.

Where to - value as a composite? He showed a picture of a Red Poll cross Angus bull – strengths: slick coat, early sexual maturity, marbling, not extreme in maternal size. Weaknesses – udders (maybe) and lack of data.

Look at pigs, chickens, lambs – breeders have created terminal & maternal lines and indexes. Chickens used multi trait dollar indexes. The beef industry has failed to follow suit.



Miss Gemma Wilkinson; she joined Southern Beef Technology Services in 2012 to facilitate genetic progress in beef breeding programs. She is responsible for providing technical services to the Red Poll breed. She has presented a series of lectures in New Zealand on bull selection.

Gemma spoke on '**Beef Breeding in the Modern World**'

'What is genetic improvement and why do we need it?'

DNA Testing & Genomics

- average genetic merit of offspring is higher than that of parents
- tool to improve phenotype & profitability
- genotype passed onto offspring + DNA plus environment.
- Genetic improvement is permanent & cumulative.
(In South Australia the average rate of gain for sires is \$3.00 to \$3.50 per cow mated per year)

Modern Genetic Selection Tools

You need to use them

- breeding objectives and direction
- selection of animals facilitates change in that direction

Breedplan is based on pedigree and performance recording. BLUP technology used to create EBV's + selection indexes, MateSel (a tool that enables breeders to optimise breeding outcomes by creating a suggested mating list based on a group of candidate sires and dams), internet solutions and DNA technology.

Seven herds of Red Polls currently are currently registered in Breedplan out of 77 herds. 40% of the 2012 drop of calves were in those 7 herds.

Milk is maternal contribution to the 200day weights.

MateSel mating allocation – balances inbreeding and genetic gain (Used in pig & chicken industries)

GeneProb – genetic condition pedigree mapping

DNA Testing

- parentage verification
- Horn/poll test
- Red/black coat colour
- Genetic conditions
- Myostatin; double muscling
- Genomic prediction equations for production traits
- Discovery population for Red Poll breed?

Progeny Testing – Beef information Nucleis (BINS)

- 1) Comprehensive Performance Recording – improve
- 2) Develop Red Poll selection indexes (Very important) – calving ease; days to calving; docility; structural traits.

There was some discussion EBV's.

Mark Harris (Aus) observed that Gestation length EBV's only able to be provided by those using AI.

Simon Temple (UK) Comparison of Signet & ABRI results. Could submit data to Australi and dual record. He had to resubmit data off existing scheme to go into ABRI.

Jimmy Brooks (Kenya) Only good for directly comparing animals that come from the same environment.

ABRI's annual membership approximately \$A140. About \$4 per animal to enter which covers; birth weight, 200, 400 and 600 day weights. Back entry is \$3 per animal approx.

Editor's personal notes on speakers –

Ian Coghlan – thanks to speakers; question and answer session. "It's people who drive changes – need to act now"

Tim Fischer – down to earth; did his homework – 1st herdbook, how developed; breed renowned for efficiency in feed conversion.

John Buxton – uses Breed plan as a selection tool. Apply pressure to breeding herds!

Gerald Spry – noted that the genetics imported from the States in the 80's/90's were not what he would use today. Looks at the whole package, longevity etc. Likes balanced EBV's and sire testing. He keeps an open mind on other breeds.

Don Lawson – used humour to get his point across. Stressed that Red Polls need better data, to appeal to the huge opportunity, of composite breeding.

Gemma Wilkinson – Need more recording of current traits to improve accuracy figures. Use selection indexes to improve products - vealers and steers. Conception rates, gestation periods etc. 'Not only producing right product but have evidence of the progress'. Frame score 5 – 6 optimum size.

Following afternoon tea was the Delegates Meeting, the minutes of which were in the April 2015 newsletter.



That night after the Congress, the dinner was held at the same venue. Beautiful flower arrangements of red waratahs, red gerberas and dark green foliage dressed the room retained from the Congress Meeting.

About 60 - 65 people attended the dinner with some who had not attended the Congress joining us just for the evening meal.

Eric Otieno Owino from Kenya wore his stunning national costume – Wow!



From L to R: *Fairfax Scholars Heather Wellington (Jamaica) Dr Erick Otieno Owino (Kenya) and Rachael Hancock (Aust) with program arranger Murray Williams and representative of sponsor Fairfax Agricultural media, Brett Tindal and his wife.*

It was very nice food, alternate serve again, but all were delicious choices.

The first speaker was Brett Tindall of Fairfax Media. Fairfax sponsored the Scholarship programme. Murray Williams introduced Brett with the background to the Scholarship Programme. **(See Page For info on Scholars)** Brett presented each scholar with a monogrammed RM Williams vest/jacket.

The invited speaker for the evening was unable to attend at short notice (car accident) so Jimmy Brooks from Kenya very ably took his place. He was a great raconteur.

Tuesday 4th November (Melbourne Cup Day) Day 15

We had a later breakfast this morning. Warwick, Helen Bridson and I even got out for a walk in Albury's lovely Botanic Gardens – a garden of superlatives; a huge Queensland kauri tree (who knew Australia had kauris?), lovely catalpa in full flower and a magnificent ginko tree amongst the other lovely plants.

We discovered the room next door to us had a disaster overnight – someone in the room above left a spa bath running, as it overflowed it took out (fortunately empty) a large part of next door's ceiling.

It was forecast to be hot today, with flies! We boarded the bus about 10am and left 'on the road to Gundagai'. We went past Table Top, where the first of a chain of Ettamogah hotels was built, based on the cartoon in the now defunct Australian Post magazine. True to the cartoon there was a truck on the roof – disguising the air conditioner.

The background to the founding of Eurimbla was given in the first Congress speaker's biography – that of stud principal, Ian Coghlan.



As we approached Eurimbla we stopped to check out some young cattle penned at the gate. Also present there was Eurimbla Haka, a bull by Yongerellen Emmanuel, out of Martinvale Bonz Vin 258.

Eurimbla Haka

On arrival at Eurimbla homestead we were greeted by Ian and Jill and then proceeded to have a look at the cattle penned on display. A big job, to get them all in the right place, with their information up about them.

The Coghlan's stated aim is to produce Red Poll cattle that 'are easy to manage, functional and efficient'. Strong supporters of the Red Poll "On Farm Challenge", Eurimbla also enters the Australian National Fieldays Steer Competition where 120 or more steers from many breeds and crosses are run under the same conditions for 120 days. They have produced the top weight gain steers on grass; the top weight gain steers in the feedlot and the winning carcasses. In 2012 Eurimbla steers won best two overall carcasses; best two carcasses for quality, two largest eye muscle areas and highest retail meat yield.

As we viewed the animals, Ian mentioned that each of their stud sires gets approximately 50 cows, in a season. He had also devised a competition to guess how many calves a cow of a certain age had had. David Holmes won and received a bottle of 'Durif' wine as his prize for the correct answer. It was a bit of a trick question as she had a set of twins one year.

Lunch was a wonderful spread of food (Eurimbla cold beef and salad followed by fruit salad, meringues and custard creme) and cold drinks beneath some large grevilleas and an ash tree. The shade was very welcome. Everyone was given a flower for their button hole (men) or a flower to wear in one's hair (women) to enhance the atmosphere pre re tiring indoors to watch the running of the Melbourne cup. Our Tour leader, Chris Forde, organized a sweepstake which was a great deal of fun.

We left to return to Albury at 4pm. I'm not sure what everyone else got up to but I crashed on the bed while Warwick went for a walk up the hill to the Albury War Memorial. After the catnap I got back to basics and did some laundry.

Dinner was at the Albion Hotel just across and down the road a bit from the hotel we were staying alternate serve again. Mains were either chicken wrapped in bacon or lamb backstrap. Warwick and I shared – the lamb was perfect. Dessert was superfluous!

When we returned to our room we discovered the bedside lights weren't working – an after effect of the flooding next door as they made that room safe electrically no doubt. Tomorrow we're off to Canberra.



Mary Jo Schmiesing (USA) & Jimmy Brooks (Kenya) at Congress dinner



The stunning flower arrangement of waratahs & leucodendrons



Eurimbla Lepidus aged 10 years, about 200 progeny



Yongerellen Afro Eagleby – complete, accurate, balanced EBV figures



Eurimbla Leopold – semen gone to Canada and NZ



Judy Evans, Helen Bridson, Graeme Evans, (all NZ) Jill Bockman, (Aus) & Anne Hopwood (Jamaica)

RANGITIHI STUD

Today, 4th November we are more than half way through calving. This will be the last drop of calves by Woodcocks Oscar which so far look great. Other calves sired by Houtu Quaid are also looking great. If anything, the cows wintered too well with some over-fat which has caused one calving problem which happily ended well.

With lots of grass we are having to ration the stock to avoid bloat or other metabolic effects.

Within the next three weeks we hope to have all calving finished.

Yearling and two year-old replacements are looking great.

We send season's greetings to all members and wish you well for the coming year.

Gena and Robin Shepherd



This playgroup stopped long enough to pose Photo: Robin Shepherd

WORLD CONGRESS USA 2017

Update on Preparations

Hello "Kiwi" Red Poll Breeders

Greetings from the USA. Mary Jo and I, as representatives of the ARPA committee for the 2017 World Red Poll Congress to be held in the USA, would like to report that the planning for the tour is progressing well. It will be held June 1 to June 25, 2017. We think you will be happy with the scope and diversity of the tour. Included are many types of cattle operations. There is a diversity of management styles from the "corn belt", plains of Kansas, the hills of Appalachia and the Piedmont of the east coast which allows Red Polls to fit into all these sections of the US.

We have developed the tour with a few guidelines that we have learned from past tours and tour participants/organizers. Cattle, for most people are the primary focus and we have many herds to show this, but we have seen that it is also important to have time to interact with other participants of the tour as well as "the locals." To this end we have tried to plan a leisurely pace. Our country is big so there is a little travel involved but we have tried to make it as palatable as possible. Most hotels will be utilized for two nights. Almost all the meals are included. Included in this letter is a tentative schedule for the tour.

The American Red Poll Association is setting up an education program to enable Red Poll breeders to make more informed decisions as to breeding and selection for the next generation. A two year program to digitalize all the Red Poll Journals that could be found will be finished by the first of the year (2016). A history of the Red Poll breed is also being researched and hopefully will be concluded by 2017.

We hope to see many of you here in 2017.

Dan and Mary Jo Schmiesing

WORLD RED POLL TOUR 2017 Tentative Itinerary

We are pleased to present the tentative itinerary for the 2017 World Red Poll Tour and would like to encourage Red Poll breeders to participate in some manner. Participation can be done in many ways; taking the entire or part of the tour itself, helping to host at the various "stops" (please contact the host directly), attend the Congress at Purdue University (contact Dan Schmiesing). The tour has been designed to allow time to visit and interact with all the participants. Details will be coming in the future.

Tentative schedule:

Thursday 1-Jun-2017 Arrival, Dayton, Ohio: Welcome 5:00pm
Friday 2-June Jackson Farms, Spegal's Red Polls, Hoosier Park
Saturday 3-June Shuter Sunset Farms
Sunday 4-June Carl's Red Polls, Shippshewana
Monday 5-June Shippshewana, Dinner/Theater
Tuesday 6-June Shippshewana/West Lafayette, Indiana
Wednesday 7-June Conference Purdue University
Thursday 8-June McMarshall Farms/Peoria Illinois
Friday 9-June Caterpillar Tour
Saturday 10-June Hannibal, Missouri/ Kansas City
Sunday 11-June Womelsdorf Red Poll Cattle
Monday 12-June Wiese Farms, Independence, Missouri
Tuesday 13-June St. Louis
Wednesday 14-June Budweiser/Clydesdale, Purina Research Farm
Thursday 15-June Young's Red Polls
Friday 16-June Nashville
Saturday 17-June Belyew's Red Polls/Nashville
Sunday 18-June Ashville, North Carolina
Monday 19-June Biltmore Estate/WinMock-Winston Salem, North Carolina
Tuesday 20-June Carson Red Polls
Wednesday 21-June Wilkshire
Thursday 22-June Tamarac, West Virginia Gallipolis, Ohio
Friday 23-June Dorrance Red Polls/Formal Closing/Versailles, Ohio
Saturday 24-June Mardan Acres/Stonebrook Farm-Cookout
Sunday 25-June Jr. Preview Show/Miami County Fair Grounds, Dayton Airport and home

STRATHWELL REPORT

Well we are looking at another drought for our area, every southerly front just keeps going out to sea or doesn't yield any rain. At least we have irrigation which is a blessing but the electricity costs have increased. Meridian, in conjunction with Farmlands, seems to be the most value for money. We have purchased a Briggs rotor rainer which has a more reliable wetting width compared to a gun which can be affected by the wind. But not having any decent rain since August means the Wattie's pea ground had to be irrigated prior to cultivation.

I have a second year lucerne paddock which yielded 15 medium bales to the hectare which was very pleasing in this year's first cut. This was going to a local horse breeder who is prepared to pay more for it than dairy farmers.

This year we have our usual crops of milling wheat, malting barley, Wattie's peas and beans, radishes and dairy grazing.

About 25 cows are going to the bull this year. Our Sire is Strathwell Optimist, a son out of a Ken Elliot cow, sired by Birchwood Optimist. He's very quiet and sound and has sired heifers on the ground at Paul MacDonald's which are looking good.

During Autumn and spring we continue to supply our local butcher with Red Poll steers and heifers. We have a good relationship, with the cattle being killed at Ashburton Meats, then processed at the butcher's shop in Leeston 10 kms away from our farm. Long may the high beef prices continue.

At present our daughter Brionne is sitting level 2 exams and our son Trent has just completed his first year at Otago University doing a degree in PE and sports psychology. Anita is full time at St Georges Hospital in Christchurch as charge nurse of Randolph ward and really enjoying the challenge.

Wishing fellow breeders a great Xmas and looking forward to seeing you on the Canterbury tour next year.

Cheers from Ian, Anita, Trent and Brionne

PHEASANT HILL UPDATE

Beat and I have been occupied with developing our little farm near Katikati since meeting you all at the Helmsman auction at Alan and Helen Bridson's in 2013. We have built a road, done some fencing, installed troughs and drainage, and erected two sheds (one more reminiscent of a cottage ...). We had major road works on State Highway 2 adjacent to our land for a year until May 2014 and allowed Downers to fill in the cuttings on our land made for the long defunct Athenree railway station with the clay excavated for the new road. This has disturbed the paddocks so we have lost some grazing in the short term to gain better drained and contoured land in the long term. We had a half hectare of passion fruit planted in 2013 and added another hectare of kiwifruit this July, so once more this cuts into our grazing.

We have therefore reduced our cattle to the four heifers we bought at the auction in 2013. Two are from the Rosemarkie herd and the other two from Tamihana. They are beautiful and spoilt but not too fat as they get lots of exercise on our steep land, and this year we had our first attempt at breeding with them. We are very excited to announce our first calf, a heifer born on Thursday 5 November around 5 pm. The dam is Rosemarkie Emir Nike and the sire is Ketlang Monarch. [*See cover photo. Ed*]

Many thanks to Mike and Anne McSweeney for providing the semen and mentoring us through the process.

Anne-Marie & Beat Murer



Red Poll steers relaxing at Rosemarkie stud December 2015

HOUTO RED POLL REPORT

2015 has been a bit of a roller coaster here in Tangiteroria, Spring calving went really well with only one calf lost, born dead, but cow calved ok and mothered replacement calf immediately. All calves are growing well with a few standout calves looking very nice indeed. The lows have been very low with my favourite show cow, Houto Eseta, having a stroke and becoming paralysed on her right side. With lots of nursing and the Red Poll will to survive she has recovered enough to be able to stand and walk around quite well but will never be able to be shown again as she has a pronounced drag with her front leg when she walks. She was able to continue raising her calf and her add-on calf the whole time she was sick and I am sure that the fact that her calves needed her was a big factor in her recovery. Every time I tried to shut the calves away from her she became so distressed that I had to leave them with her.

Things took an even bigger turn for the worse last month when I lost my bull Houto Pompey. Two of the big bulls were starting to fight through a fence and when we went to move them apart the younger bull that was a paddock mate to Pompey got a bit excited and decided to challenge Pompey. A fight started and Pompey got shoved down hill into a swampy patch. He somehow got his neck broken as they came up against the fence. I was really devastated as we saw it happen but there was nothing we could do. So as his death wouldn't be a complete waste we decided to butcher him for meat which was a huge job but we did it with the help of the neighbours and surprisingly the meat that we got has been remarkably tender and tasty. Not bad from an 8 year old bull all pumped full of hormones and stressed out from fighting.

It's not something I want to have to do again but I am proud of the fact that we were able to butcher him by ourselves even if it took 3 days to cut and package up all the meat and make the mince. Needless to say my show team has taken a huge hit, both Eseta and Pompey have done extremely well for me at the shows and now I will have to train up some new replacements.

Hope everyone has a good Xmas and the summer is kind and not too dry.

Nina Walker

DAWN MIST REPORT

After more than 40 years of farming - the pleasure of seeing the arrival of healthy newborn calves never lessens, especially as it coincides with fresh Spring growth all around us. Calving has gone well (apart from a high percentage of bull calves) and although October threatened to be the start of the predicted summer drought, we have had some useful rain in early November.

This winter was the first (of our 4th winters on this farm) that we have had power round the farm and been able to break feed all mobs and control the pastures a lot more satisfactorily. As a result, we have a good lot of silage ready to cut - in fact there will be a nice long row of baleage along the roadside by the time this goes to print. The stock are all in good condition and we have planted a summer crop as insurance against the predicted drought. We have some heifers due to calve in early Autumn - the first time we've tried calving them at 28 to 30 months of age.

We have a new granddaughter in Melbourne - Charlotte Dianne McSweeney arrived on the 15th October, so trips to Australia will be a bit more frequent now. Every 2nd weekend over the winter we head to Ashburton or Methven to watch the older grandchildren play rugby or netball. Netball in Ashburton is played in a great new stadium, so always warm and comfortable regardless of the weather outside. Most of this year's rugby was played in sunny conditions which makes it a lot more enjoyable. There's no such thing as bare-foot rugby these days and most wear polyprops or thermals under their rugby jerseys - times have changed!!

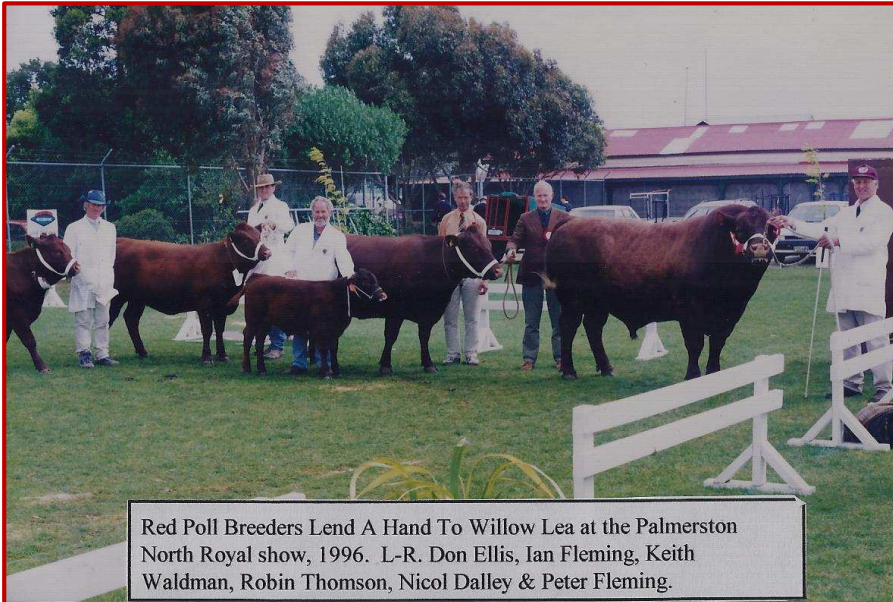
We hope you all have a pleasant summer and find time for some relaxing breaks over Xmas and New Year. We look forward to catch up with many of you at next year's AGM down here in Canterbury.

Mike and Anne McSweeney

'PHOTOS FROM THE FILES' of the Editor



L-R Peter & Ian Fleming Palmerston North Royal Show 1996



Red Poll Breeders Lend A Hand To Willow Lea at the Palmerston North Royal show, 1996. L-R. Don Ellis, Ian Fleming, Keith Waldman, Robin Thomson, Nicol Dalley & Peter Fleming.

EVANLEA REPORT November 2015

Calving over and how lovely to watch the calves ganging up and racing around the paddocks with first calving mums trying to keep up. The mature mums happy to park their calves in a safe place and enjoy some peace!

Two shows down over the past few weeks. Hastings Royal was great fun as we shared a truck to transport cattle with Rosemarkie and Maungaraki Cattle Co. Was great to catch up with Robin and Anne as we were all staying in the same motel complex. It was a good excuse to have 3 days leave to wash, brush and parade our lovely cattle in the public arena. Our cow and calf were very pleased to be offloaded into their paddock – with other cows plus bull! - following Wairarapa Show last weekend.

The grass is growing well so no doubt hay and baleage will be on the 'to do' list for Graeme in the next weeks. A little bit of docking to finish. Graeme has just had a week away at Snells Beach with Adrian and family to do a bit of fishing and some R & R. The ring-in farm worker managed to cope with school and stock with no major disasters.

All the best for the festive season. We look forward to reading all your reports in the Red Poll News and meeting up in 2016.

Judy and Graeme

Some Evanlea cows and calves December 2015:

Photo: H McKenzie



OPOUTERE RED POLLS REPORT

We had a terrible start to calving, the first three cows all had twins, with veterinary assistance needed. At one stage four cows had dropped seven calves, four dead and three alive, with two cows in a sad way.

However everything changed and each cow that followed duly produced one calf without any assistance. All cows and calves are doing well, though there are still two to calve. Winter seemed to go on and on; spring was late but quite we had spectacular growth when it did arrive, and now we are all set for a drought, the pessimists tell us.

Of seven, one year old bulls, we sold six for breeding at \$1000 each. We have kept one back, he is a very plain slabby looking thing, and he will go to the works in the autumn. I should have turned him into a steer as a weaner but he looked alright up until the end of the winter.

We were expecting better than \$1000 for our yearling bulls, as the beef schedule is at record highs, but we do have a forward order for 2016 for four yearling bulls.

Wishing all fellow breeders a good season.

Allan & Helen Bridson

GLORIOUS INSULTS #9

'The plot was designed in a light vein that somehow became varicose'

David Gardner, in Bennett Cerf, *Try and Stop Me*

TAMIHANA FROM TARANAKI

Another year has all but gone; what an interesting year it has been. A quite severe Winter has given way to a stop go Spring, with new snow still arriving in the South Island in the beginning of November. Taranaki has had good rain recently, with every shower from now on keeping us one more day away from a dry summer. The beef schedule is rapidly dropping as the American meat market (poultry, pork and beef) recover from a series of setbacks that all coincided to give NZ record high returns over the last couple of years or so. Like all aspects of farming, we can only survive if the highs and lows are accepted as normal.

Calving was disappointing this year, with 14 per cent empties and 6 breech births, (2 from each bull used). Only one breech was bigger than normal, with the vet's explanation being that it was just our turn. Only two losses from the six, both simply not being caught in time.

We lost 'Tamihana Tom's Kingsley CP' after running with his mob for just 3 weeks last spring. To save the bother of DNA testing the calves if we had run another Red Poll bull for the rest of the mating season, it was decided to colour-code the calves by hiring a Speckled Park bull from a herd just south of Waitara. The results have been exceptional, with the Speckled Park colour dominating in all but 4 calves. Eye appraisal is not giving them any weight gain advantage at this stage, but the scales will give an accurate assessment at weaning. Semen was collected from TT Kingsley CP for export (800 straws have been sold to USA and South America) so his influence can continue for some time yet.

A trip to the recently held Royal Show at Hastings gave a welcome break from calf rearing etc and an enjoyable catch up with the Wairarapa Red Poll breeders who had made the effort to display and promote the breed. It was at the request of Bruce Orr, well known PGG Wrightson beef stud stock agent, that I got the chance to judge the Red Polls on display. Because of entry numbers several minor breeds were paraded in the one ring; Red Poll, South Devon, Belgian Blue and Dexters. Graeme & Judy Evan's 3 year cow and calf was the only entry in their class, so deservedly were awarded First Prize. The other Red Poll entry was a yearling bull entered by Helen McKenzie and

Warwick Potts. This young bull was competing against two South Devons. First glance put the best South Devon bull in front but on closer examination, the 'Devon' was just on the pad with his teeth and his post legged stance when standing, indicated problems with the knee joint would prevent reasonable serving ability. Both the Red Poll and the South Devon had excellent muscle pattern, but I would suggest the Red Poll would exceed yield when processed by one or two percent.

The official judge for the combined classes was Mr Ian Brown, a retired Hereford breeder. We interestingly agreed on the placings awarded, but come time for the All Breeds classes, where I could not partake, as I was not on the official judges list, the Red Poll bull was not given a mention. Why? Because very few judges are prepared to even look at minor breeds and prefer to judge on coat colour or breed fashion. This has been a sad fact for many years and does nothing to teach on-lookers the real merit of good conformation, regardless of breed.

Gone are the days where the judging rings had standing room only for spectators. Advisors and performance figures are now the guiding influences for the modern farmer. So please tell me, what suggestions do you have, for promoting our very under-rated breed, or do we accept being a hobby breed for life-stylers - end of story.

Ann & Robin wish you all a very Merry Christmas and all the best for 2016.

Robin & Ann

STOP PRESS

USA Red Poll Annual Meeting & Sale; held mid October, 2015 -

Top priced male, sired by Tamihana Tom's Kingsley CP

Top priced female, sired by Tamihana Tom's Kingsley CP

Note: CP stands for Clean Pedigree i.e. no 'supergene' influence for a minimum of four generations.

ROSEMARKIE REPORT

Another year has just whizzed past. Even though I have written up a stage of the Australian Tour in each issue of the newsletter, I still feel as the trip was only three or four months ago.

Well, calving has finished with 9 heifers and nine bulls on the ground and one older cow dry. She's off to the works once our other cull cow weans her calf or the spare 2 year bull is prime enough to go, whichever comes first. At present he's over with the neighbour's two Friesian females keeping them happy.

The calves by Dawn Mist Zeus Montana are looking very promising. Monty has a few extra cows this year and we are also using the homebred yearling bull we took to the show, Mort's Ash (J4) – that's him on the truck going home from Wairarapa show at Carterton with the show sheep, below.

We went to the Royal with sheep and Ash. Warwick had put a lot of time into training Ash and we were very pleased with the way he behaved – he never put a foot wrong. As there were only two Red Poll exhibits at the show we were put in the Any Other Breeds which was a bit disappointing but Ash managed to win over the two South Devon bulls in his age group and was up against a small 3 year old Belgian Blue for the Champion ribbon but Ash came away with Reserve Champion. Ash was given good-ish grass and baleage over winter with a few cups of feed as a training reward. He looked in lovely order. If he continues to behave, he will go to Masterton Show in February, perhaps with a heifer as well – 2 are broken in although still need a bit of work. They

were not in suitable condition to show after winter so stayed home!



Best Wishes for 2016 to you all and safe travelling if you're going away over the holidays.

Helen & Warwick

A BIT OF HISTORY

Patea Mail, Issue 45, 10th April 1895 (*National Library NZ 'Papers Past'*)

Cows For The Churn - As dairy cattle the "Old Home Breds," or Red Polls of Suffolk, have few, if any, superiors. Lord Rothschild has established a herd of these cattle at Tring, and last year twenty seven cows yielded an average of 673 gallons of milk each, two of them making respectively the phenomenal record of 1120 and 1148 ½ gallons of milk.

In Victoria (says an Exchange) an interesting experiment is being carried out by Messrs Chirnside Bros., at Werribee Park. The Red Polls are being crossed with Herefords, the object sought being first to obtain a breed of useful dairy cows, and second to raise steers that will be more acceptable to the Melbourne butchers than the pure Herefords. In this experiment the crossbreds have favoured the Red Polls, all traces of the Hereford being lost, save a few irregular spots of white on the face.

Just across the border Mr James Mitchell, of Tabletop, is making a still more interesting experiment. He obtained a Red Poll bull from Messrs Chirnside, and has put to him a number of his pure Devon cows. The crossbreds in this instance favour the Devon greatly in form, style and colour; but as in the Hereford Red Poll cross, they are all either polled or have small snail horns. Mr Mitchell is so pleased with the result of his experiment, says "Bruni." in the Australasian, that he intends sending to England for the best Red Poll bull that can be obtained in the market. He is convinced that the cross between the Red Poll and the Devon will be an admirable farmer's cow, good for the dairy, good for the butcher when her work at the pail is over, and she will have the great advantage of being hornless.

Mr Mitchell says that the young steers of this cross are admirable beasts, being Devons all over save that they have no horns. As yet the stock are too young to say what they will be as dairy cattle, but the Red Poll has such a well-deserved renown as a milker, and the bulls, imported by Messrs Chirnside were from famous dairy herds, that the crossbreds are almost certain to turn out well. It is the custom to regard the Devons as useless for the dairy, but this is a great mistake. The milking families furnish grand dairy cows. They do not give as much milk as some other breed, but the richness and quality of their milk cannot be surpassed.

AUSTRALIAN NEWS

Omega Three Red Polls

I thought you might be interested in these photographs of Omega 3 Reef Knot and Omega 3 Grand Zep. They were the two, just weaned calves, that spooked badly when the Tour bus arrived here about twelve months ago. Not long after the tour they were sent to a fitter and prepared for the Sydney Royal Show in March 2015.

Whilst they were at the fitters Grand Zep was joined and the result is a beautiful bull calf, which she had on 3rd November.

We are a little greener than a year ago, but still only short grass.



Omega 3 Grand Zep & calf Photo: Prue Lee

Hope everything is going well in New Zealand; Kind regards,

*Prue Lee
Omega 3 Red Polls*



*Omega 3
Reef Knot
Photo: Prue Lee*

Eurimbla Red Polls Update

In the next ten days we will be joining Eurimbla Haka [see photo page 18] to fifty five of our stud cows.

In other New Zealand related news, this morning we inseminated 30 of our stud cows to Garthmyl Toreador. Mike and Anne McSweeney had Toreador collected for us a couple of years ago.

Also our 12 ET bred NZ calves are doing well and are now about 20 months old; one of the heifers was Reserve Junior Champion Female, at the Red Poll Feature Show at Sydney Royal, earlier this year. They are sired by M-M Century 21 and are out of Garthmyl Noosa.

I'm in a bit of a rush and so will keep going. Congratulation on the All Blacks win in the rugby – well deserved.

*Ian Coghlan
Eurimbla*



Photo: I & A Fleming

Cows and calves at NZ associate member, Paul McDonald's, property near Christchurch recently.

14th Red Poll World Congress Scholarship Programme

Article from "Red Poll Beef Annual" 2015 [*Australian*]

Reprinted with permission

Rachael Hancock from Glen Innes in Northern NSW has been announced as the Australian recipient of the Fairfax Red Poll Scholarship. Rachael runs a Red Poll stud with her father and holds a Diploma of Agriculture from Dalby Agricultural College. She is currently employed with Herefords Australia as Registrar and has held a similar position with the Angus breed.



Fairfax Agricultural media has undertaken to partner the 14th World Red Poll Congress in Australia by assisting with an educational programme for three Scholars, one each from Australia, Jamaica and Kenya. The Congress will start in Perth on 21st October and participants will visit Red Poll studs as they travel across Australia ending at the Gold Coast on 11th November.

The Scholarship programme is designed to provide the full Congress component enhanced by a number of specific educational sessions. These sessions will include talks by prominent Australian Red poll breeders; mentoring at on farm visits by leading world breeders; on coach tutorials and attendance at the World Congress in Albury.

The programme was initiated by Australian Red Poll breeders during a meeting at the 13th Congress in the UK in 2011. It is designed to add value to the Congress Tour for younger breeders, some of whom have been sponsored by their country or employer. It is expected that for the rest of their careers they will build on the knowledge gained and the worldwide network they will have established.

The Australian selection panel has described Rachael as an outstanding candidate. She is currently Chair of the Red Poll National Youth Committee and has been the principal organiser of the national Red Poll Youth Camp for the past nine years. Her community involvement extends to both of the Armidale and Glen Innes show committees.

Passionate about her Red Poll cattle Rachael is also dedicated to the Australian beef industry. She says her work with Breed Societies has enabled her to learn about new technologies and their application within the cattle industry. "I really enjoy the involvement at the cutting edge." Rachael said. "I am sure the experience of being involved and learning from other breeders throughout the Congress will be of great value to me. It will help me in my work and in my long term goal of returning full time to the family farm."

Jamaican, **Heather Wellington**, is also looking forward to participating as a Fairfax Red Poll Scholar. She is senior customer service representative at Agro Grace, a retail agribusiness at Mandeville, and has been involved with the activities at the family owned YS Farms for the past eight years. The farm runs both Red Poll and Jamaica Brahman cattle. Heather owns her own small Red Poll herd.



Dr Erick Otieno Owino, Vet surgeon and Livestock Manager for the Mazao Yetu Ltd / Homa Lime Co Ltd in western Kenya is the third Scholar. He is looking forward to sharing time with the Red Poll breeders from UK, USA, NZ, Jamaica and Australia during the Congress and expanding his knowledge of the breed. He believes the hardiness and capacity to perform on limited food supplies is a feature of Red Polls in his country. He is currently studying for a Masters degree in Animal Breeding and Genetics.



Thanks to Murray Williams for providing this press release.

SUMMER BEEF STROGANOFF

Recipe courtesy of Beef+Lamb NZ from 'Meat Issue 16, Summer 2015

400g [Red Poll] Beef rump
1 tsp Paprika
Zest of 1 lemon

Mushroom Sauce

2 Tspn oil
1 red onion finely sliced
2 cloves garlic, crushed
250gms mixed mushrooms, wiped, and sliced if large
½ cup beef stock
½ cup crème fraiche or natural unsweetened yoghurt

To serve

Cooked rice
3 Tspn finely chopped fresh parsley
Zest of lemon

Beef: cut rump into 5cm x 1cm strips and toss in paprika and lemon zest

Mushroom sauce: Heat oil in large frying pan over medium heat and add the beef rump strips and cook quickly on both sides. Remove from the pan onto a plate. Reduce heat to low and add onion and garlic and cook until onion is soft. Increase heat to medium and add the mushrooms and cook until mushrooms are lightly golden. Pour in the stock and cook until hot, then return rump strips to pan briefly – no more than one minute. Season and stir through the crème fraiche or yoghurt.

To serve: Serve hot with cooked rice and sprinkled with the chopped parsley and lemon zest.

Photos Back Cover:

Above: Left - Strathwell Fitzwilliam, and friends

Below: The Wairarapa Royal Show contingent with Warwick Potts & yearling bull, Rosemarkie Mort's Ash, in the foreground; Judy Evans and Evanlea Melody and Graeme Evans holding the calf.

